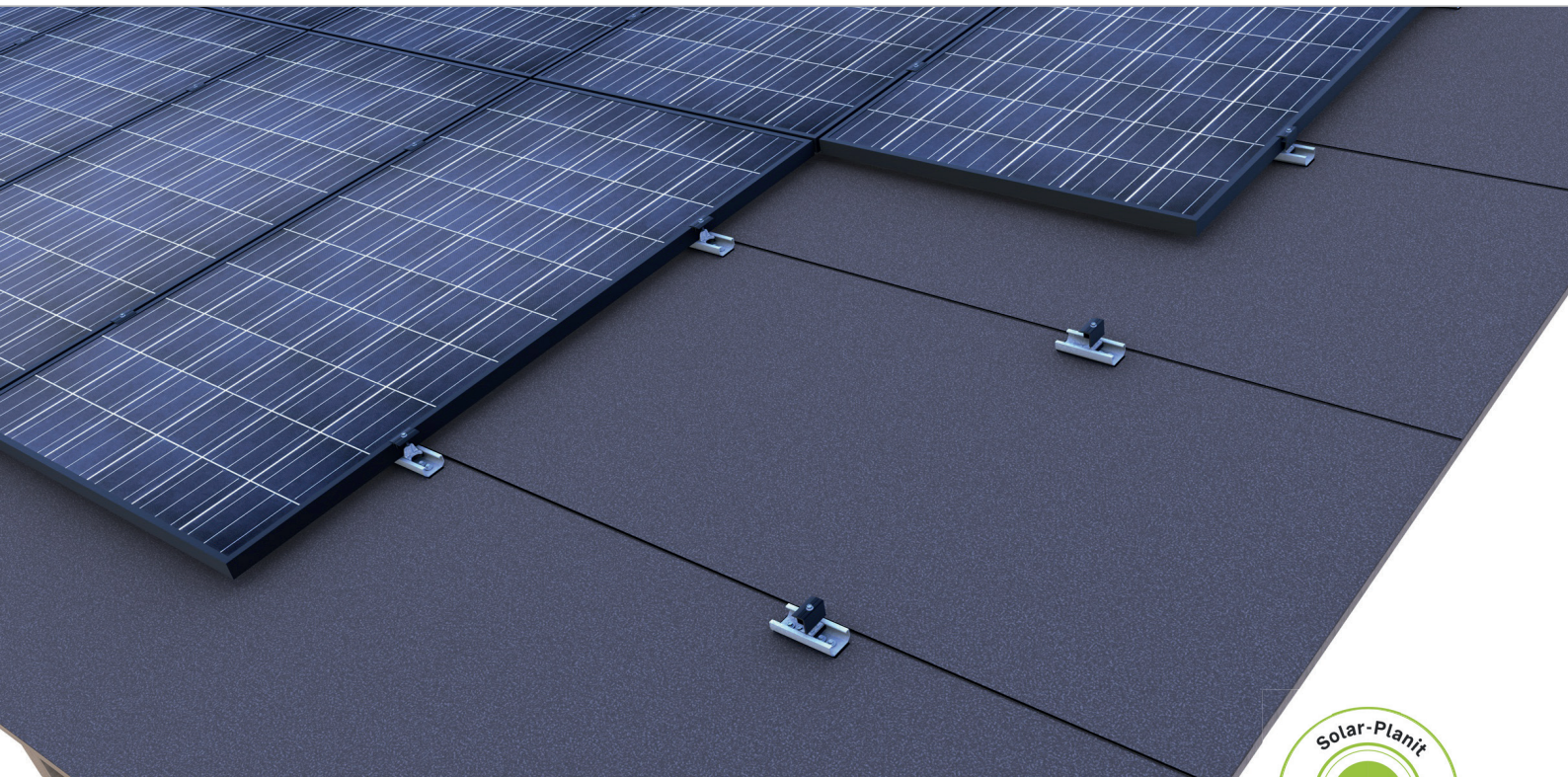
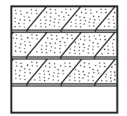


Bitumen roof | clamping system

Clamping system with direct fixing and modules installed in portrait or landscape



Mounting in landscape or in portrait – direct fixing on bitumen

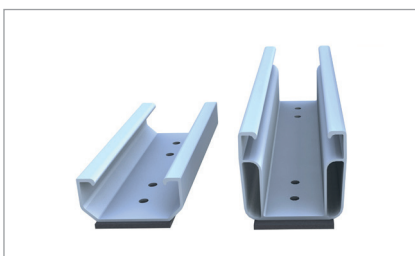
- mounting modules in portrait or in landscape
- module clamping in the optimum clamping range
- reduced logistical effort
- quick and efficient mounting from above

produkt variants

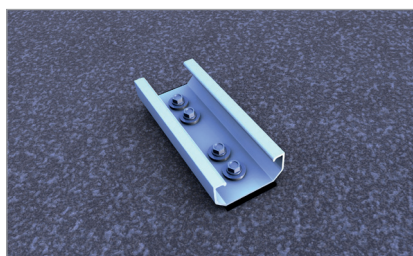
- short rail C24 for the yield-optimised installation or the project business
- short rail C47 for excellent module rear ventilation with extra space to the roof covering

Your benefits

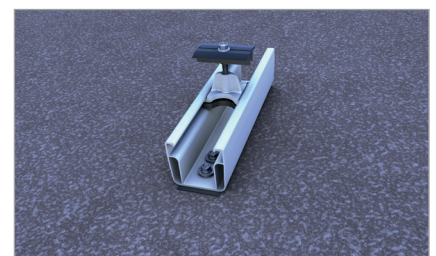
- only a handful of components, entirely preassembled
- low material costs and easy handling
- Direct fixing with building authority-approved mounting screws
- only one mounting tool necessary



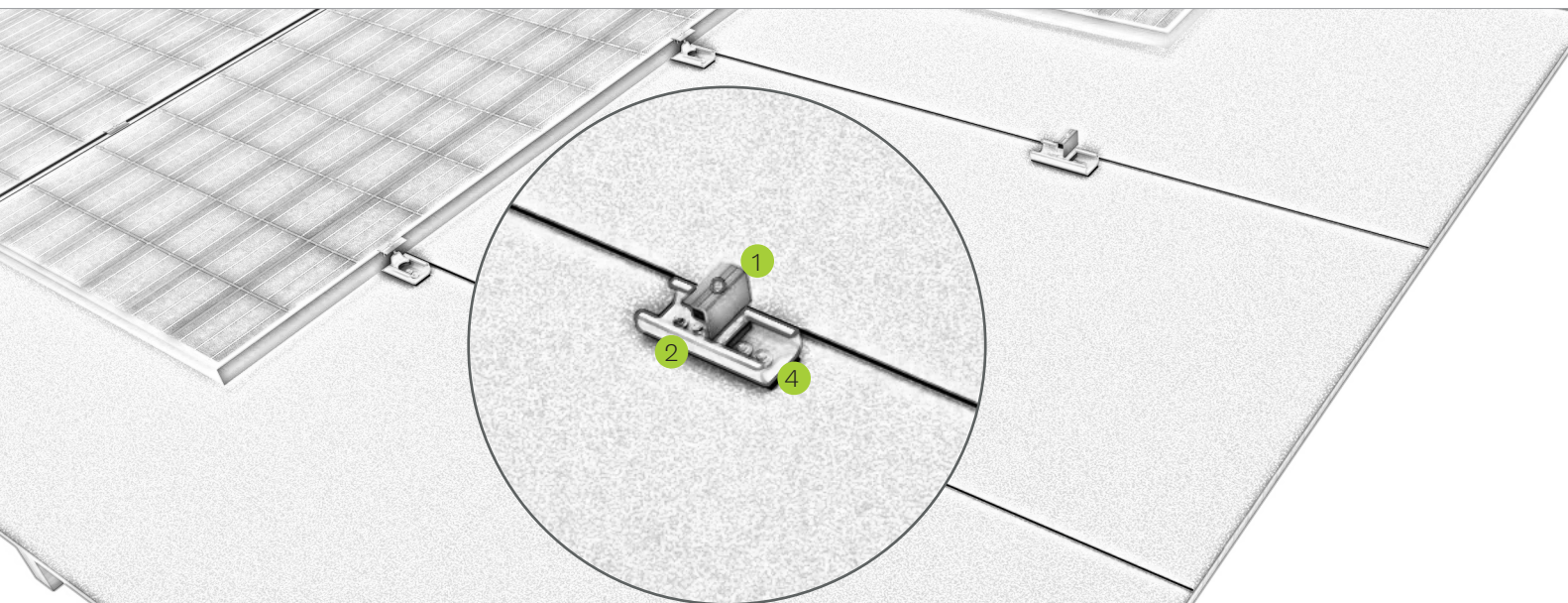
Short rails C24 and C47



short rail C24 with four mounting screws for high wind loads

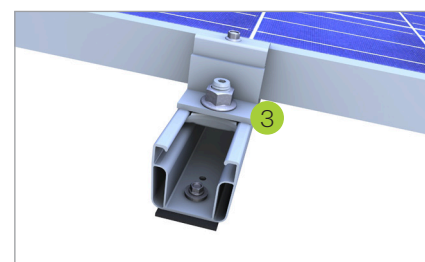


Middle clamp in short rail C47

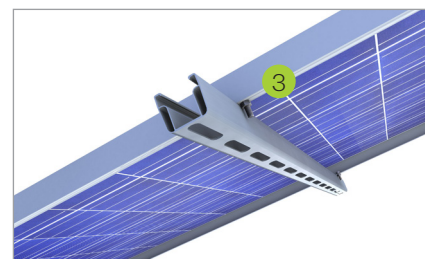


Pic Designation

- 1
Middle and end clamp
 - for frame heights of 30-42 mm and 43-52 mm
 - available in blank and black anodized
- 2
Short rail
 - material-saving fixation
 - entirely pre-assembled with EPDM-sealing and perforations
- 3
Slip guard
 - for fixing modules mounted in landscape and portrait
 - mounting aid for the lowest module row
- 4
Mounting screw
 - building authority-approved
 - individual calculation of the fasteners



Slip guard for fixing modules in landscape



Slip guard for fixing modules in portrait

Mounting video



novotegra GmbH
 Eisenbahnstraße 150 | 72072 Tübingen | Deutschland
 Tel. +49 7071 98987-0, info@novotegra.com
 www.novotegra.com

Irrtümer und Änderungen vorbehalten.
 Stand: Juni 2021 / TP