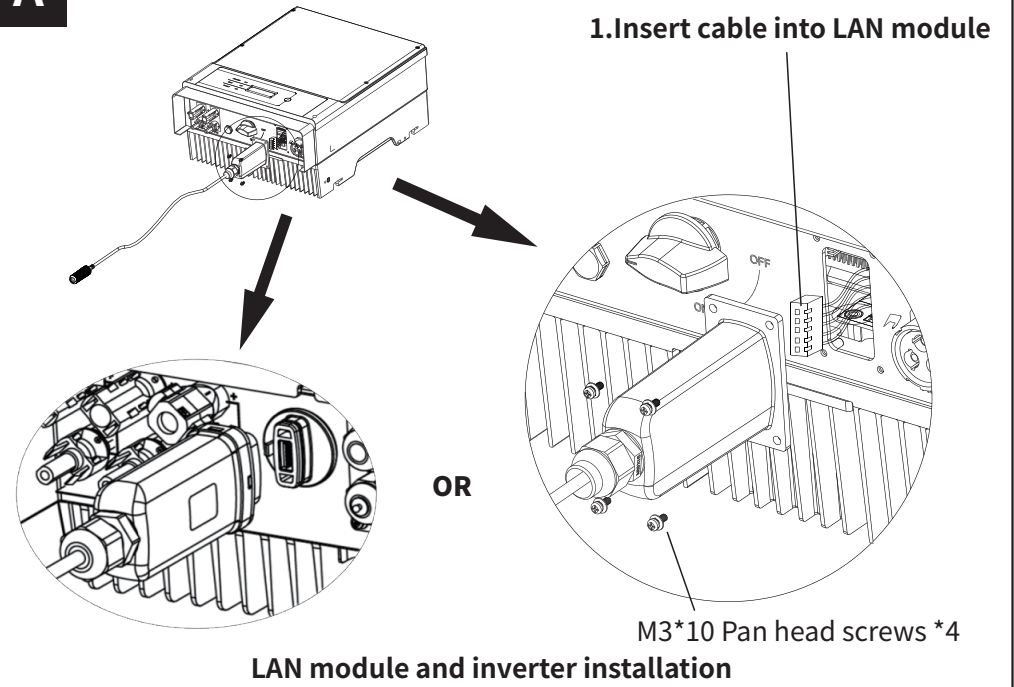


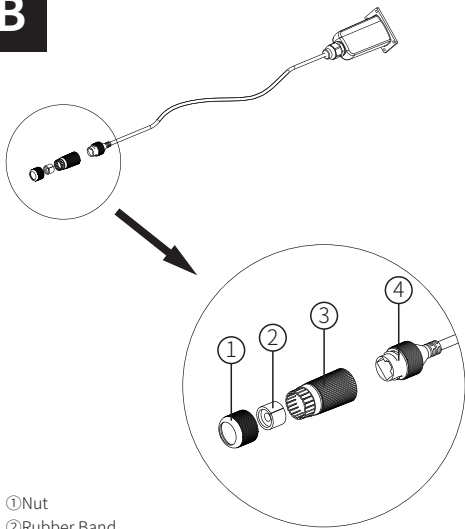
LAN Module Quick Installation Guide

Rev 1.1
2020-11-11

A



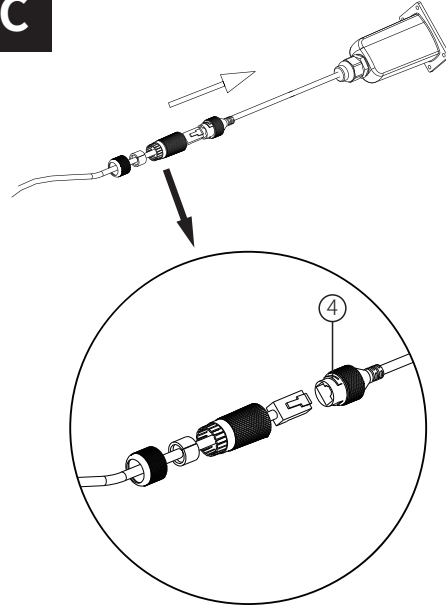
B



- ① Nut
- ② Rubber Band
- ③ Noumenon
- ④ Network Port Connector

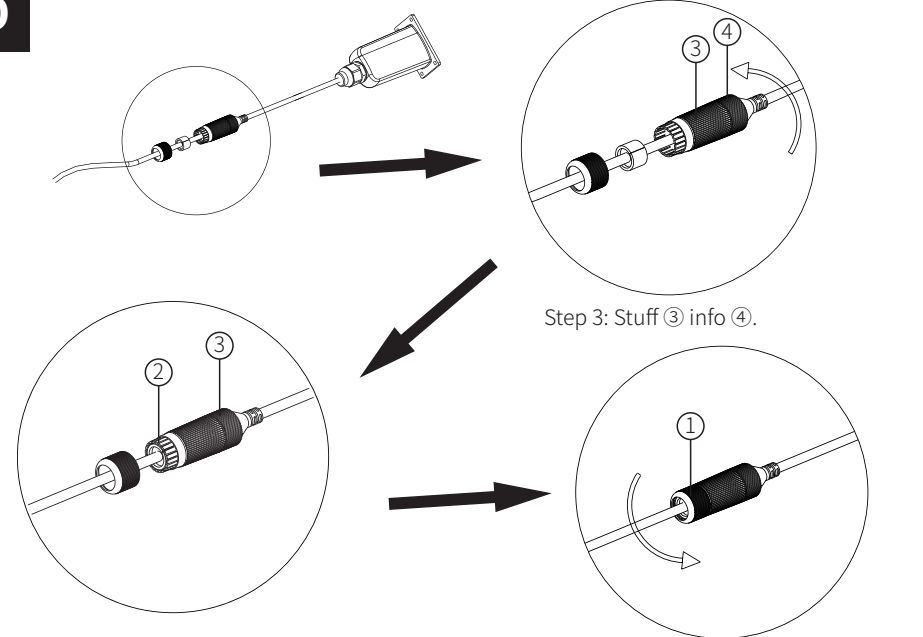
2. Connect the LAN cable to the LAN module
Step 1: Unscrew the connector kit

C



Step 2: Insert the LAN cable through the connector kit and tighten it with ④.

D



E

03. Settings Of Router & Switch

3.1 Settings Of Connect LAN Cable To Router

LAN module default IP acquisition mode is DHCP (Dynamic Acquisition).

When connecting the LAN module to a router (Router is commonly set to dynamically allocate IP), no operation is required on the module. You only need to connect the LAN cable to the router's LAN port)

3.2 Settings Of Connect LAN Cable To Switch

When the LAN module connect to the switch (Or the router is set to statically allocate IP), the IP access method must be changed to STATIC.

1. After the LAN module is powered on, connect it directly to the computer through a network cable.
2. Enter 169.254.1.1 in the browser and press enter.
3. Enter the username and password (default: admin)
4. In "Advanced" "DHCP" setting for "STA", select "STATIC" for IP DHCP Mode and modify the IP address, subnet mask, default gateway, and DNS server address as needed. After the modification is completed, click save, as shown in pic(1)

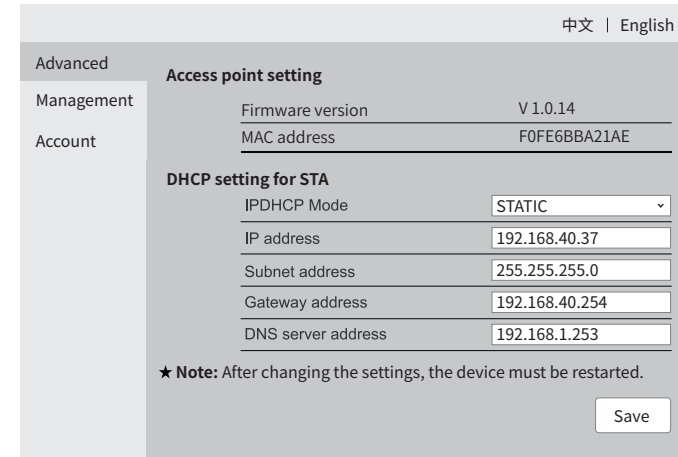
Note:

The IP address, subnet mask, default gateway, and DNS server address in pic(1) are examples.

Users should set parameters according to their own actual needs.

You can refer to the settings of static IP parameters of other devices that have been connected to the switch (Make sure the last number of IP address is different from other devices, others are the same).

F

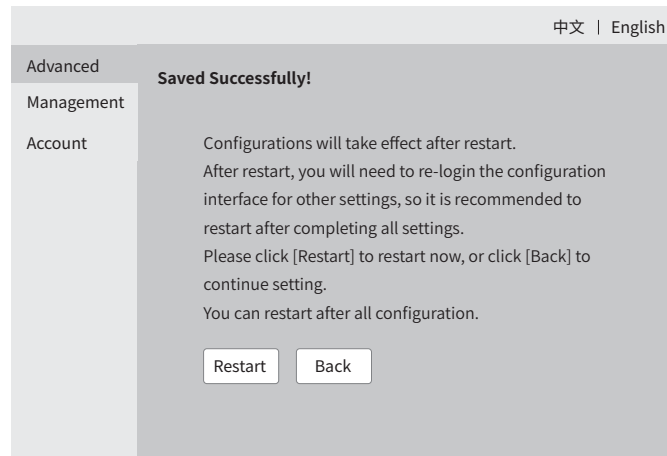


Pic(1)

G

5. After clicking on save, click restart when prompted.

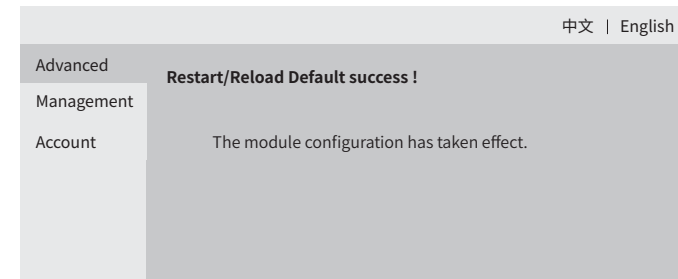
As shown in pic(2).



Pic(2)

H

6. Restart complete. As shown in pic(3)



Pic(3)

Note:

1. After the static IP is set, the modified IP address must be entered for the next login, the computer IP and the modified IP have to be in the same network segment, the original default IP (169.254.1.1) cannot be used for login. If forget the modified IP, the module can be reset at the inverter and then log in using the default IP (169.254.1.1).
2. The maximum transmission distance of LAN cable is 80 meters.
3. When using LAN module communication, ARM software needs to be upgraded to ARM05 version or newer.

