

new golf enclosures
VS and VF series





Der neue golf

Innovation aus Inspiration

The new golf. Just more: More ideas, more flexibility. A brand new concept containing numerous ideas from practical experience. Fully in line with the tradition of Hager - the guarantor for quality and innovation in electrical-technics for more than 50 years. The new golf comprises lots of new features that will simplify your daily work. More wiring space. More flexibility - the flush mounting version allows the application in massive and hollow walls. More time-savings thanks to more efficient mounting steps. More installation comfort thanks to "un-loosable" hollow wall clamps.



“Make my life easier”

In general I want the box to be easy to work in... like not having to dismount the modules to get at the mounting screws.



“More room for my fingers”

More room for running cables and space for my fingers... Not so tight and cramped.



“Keep it simple”

Clear open design that makes wiring and fitting simple... It doesn't need to be too clever, just keep it simple.



“One range for all needs”

Can't you make one range for small business and domestic jobs? Why should I have to change boxes all the time? It's confusing.



“the big thing are the details”

What about printing diagrams in the box to show you its features. I can't be using a brochure on the job. Make it clear how to save time and do the job right.

It is not easy to improve a well-established product. It requires a real close look. But this is exactly what our engineers did: Any detail, as small as it may be, has been examined closely, each mounting step was checked out in detail. Things that proved of value have been kept, where potential for optimisation showed up things has been improved carefully.

Herefore our engineers have - Hager like - cooperated closely with experienced experts (you, electrical contractors) to use their inputs and recommendations. The result is a new milestone in energy distribution. From experience for real life. From professionals for professionals!

VF Series

Discrete beauty



Technical data:

- IP rating:
 - IP30 without door
 - IP40 with door
 - IK07
- Isolation Class II
- White colour RAL 9010
- Rated current:
 - for devices up to 63 A
- Rated insulation:
 - 400 V a.c./50 Hz
- Glow wiring test: 850°C

Standards:

all the products of the offer conform to IEC 60439-3
All products conform to the RoHS and WEEE directives.

Expert tips



Instant, hollow wall mounting

New for application in massive and hollow walls. "Un-loosable" hollow wall clamps with quick snap lock enable easy mounting.



More cabling space makes the job quicker and easier

- Ease of installation guaranteed by greater space for working and cabling between MD and terminals
- More cabling space behind DIN rails simplifies wiring.



Easy to mark out wall opening

Cut-outs around the lip make marking out the wall opening a simple task.



Snapper mounted terminals

- Instant installation of snapper supporting quick connect or brass terminals.
- Instant installation of snapper supporting quick connect terminals.
- Instant installation of snapper supporting brass terminals.



Dekoband

Self-adhesive deco stickers for the flush mounting frame to achieve a harmonic changeover to the wall design. The stripes are available in seven exclusive colours.



Self-explanatory box

All product features clearly indicated by illustrations in the box itself.



Easy, comfortable cable management and fixing

Patented integrated cable fixation using clips or standard cable-ties.



Unbreakable door hinges

- New design makes broken hinges a thing of the past.
- Same door for flush and surface mounted enclosures.
- Left or right facing, symmetrical door installation.

Flush mounted distribution boxes from 1 to 4 rows, from 4 to 72 modules, supplied with plain or transparent door for devices up to 70 mm installation depth.
Distribution boards manufactured from plastic material.
Door can be fitted on right or left without dismantling the cover; optional lock and keys. Door opens up to 180°.

Components included:

- Brass screw-type
- Pole fillers
- New patented marking system (VZ787N)
- Towers to fix cable ties for clear cable management are included, cable-retaining clips are optional. (except in 4 and 8 Mod. Enclosures) (VZ699N)
- Door protected by a plastic film
- Carton packaging

- DIN Rail chassis with plaster compensation (in depth, up to 4 mm for VF104 and 108, 8 mm, for the rest of the range) in case the box is installed too deep inside the wall (maybe covered by plaster). The chassis can be also adjusted to the horizontal up to 2°.
- Closed hollow-wall anchor fixation areas, hollow-wall anchor as accessory. (VZ696N)

NEW



VF104PD

golf VF 1 row 4

- Wall niche: 189 x 170 x 72 mm

Description	Type of door
1 x 4 mod.	Plain
1 x 4 mod.	Transparent

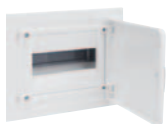
Brass terminals PE + N



blanking strips



25 mm ²	16 mm ²	10 mm ²	Best.nr.
-	2	2	VF104PD
-	2	2	VF104TD



VF108PD

golf VF 1 row 8

- Wall niche: 189 x 242 x 72 mm

Description	Type of door
1 x 8 mod.	Plain
1 x 8 mod.	Transparent

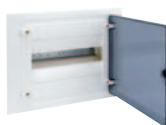
Brass terminals PE + N



blanking strips



25 mm ²	16 mm ²	10 mm ²	Best.nr.
-	3	3	VF108PD
-	3	3	VF108TD



VF112TD

golf VF 1 row 12

- Wall niche: 257 x 318 x 72 mm

Description	Type of door
1 x 12 mod.	Plain
1 x 12 mod.	Transparent

Brass terminals PE + N



blanking strips



25 mm ²	16 mm ²	10 mm ²	Best.nr.
-	3	5	VF112PD
-	3	5	VF112TD



VF212PD

golf VF 1 row 24

- Wall niche: 382 x 318 x 72 mm

Description	Type of door
2 x 12 mod.	Plain
2 x 12 mod.	Transparent

Brass terminals PE + N



blanking strips



25 mm ²	16 mm ²	10 mm ²	Best.nr.
-	4	6	VF212PD
-	4	6	VF212TD



VF312PD

golf VF 1 row 36

- Wall niche: 507 x 318 x 72 mm

Description	Type of door
3 x 12 mod.	Plain
3 x 36 mod.	Transparent

Brass terminals PE + N



blanking strips



25 mm ²	16 mm ²	10 mm ²	Best.nr.
-	5	6	VF312PD
-	5	6	VF312TD



VF412PD

golf VF 1 row 48

- Wall niche: 652 x 318 x 72 mm

Description	Type of door
4 x 12 mod.	Plain
4 x 12 mod.	Transparent

Brass terminals PE + N



blanking strips



25 mm ²	16 mm ²	10 mm ²	Best.nr.
-	6	8	VF412PD
-	6	8	VF412TD

Technical data:

- IP rating:
IP30 without door
IP40 with door
IK07
- Isolation Class II
- White colour RAL 9010
- Rated current:
for devices up to 63 A
- Rated insulation:
400 V A.C./50 Hz
- Glow wiring test: 850°C

Standards:

all the products of the offer conform to IEC 60439-3
All products conform to the RoHS and WEEE directives.

NEW


VF118PD

golf VF 1 row 18

- Wall niche: 257 x 426 x 72 mm

Brass terminals PE + N



blanking strips



Description	Type of door	25 mm ²	16 mm ²	10 mm ²	Best.nr.
1 x 18 mod.	Plain	1	4	5	VF118PD
1 x 18 mod.	Transparent	1	4	5	VF118TD



VF218PD

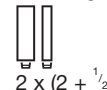
golf VF 2 row 36

- Wall niche: 382 x 426 x 72 mm

Brass terminals PE + N



blanking strips



Description	Type of door	25 mm ²	16 mm ²	10 mm ²	Best.nr.
2 x 18 mod.	Plain	1	6	7	VF218PD
2 x 18 mod.	Transparent	1	6	7	VF218TD



VF318PD

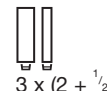
golf VF 3 row 54

- Wall niche: 507 x 426 x 72 mm

Brass terminals PE + N



blanking strips



Description	Type of door	25 mm ²	16 mm ²	10 mm ²	Best.nr.
3 x 18 mod.	Plain	1	7	8	VF318PD
3 x 18 mod.	Transparent	1	7	8	VF318TD



VF418PD

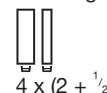
golf VF 4 row 72

- Wall niche: 652 x 426 x 72 mm

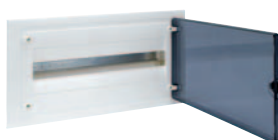
Brass terminals PE + N



blanking strips



Description	Type of door	25 mm ²	16 mm ²	10 mm ²	Best.nr.
4 x 18 mod.	Plain	1	8	9	VF418PD
4 x 18 mod.	Transparent	1	8	9	VF418TD



VF122TD

golf VF 1 row 22

- Wall niche: 507 x 426 x 72 mm

Brass terminals PE + N



blanking strips



Description	Type of door	25 mm ²	16 mm ²	10 mm ²	Best.nr.
1 x 22 mod.	Plain		4	6	VF122PD
1 x 22 mod.	Transparent		4	6	VF122TD

VS Series

Discrete beauty



Technical data

- IP rating:
 - IP30 without door
 - IP40 with door
 - IK07
- Isolation Class II
- White colour RAL 9010
- Rated current:
 - for devices up to 63 A
- Rated insulation:
 - 400 V a.c./50 Hz
- Glow wiring test: 650°C

Standards:

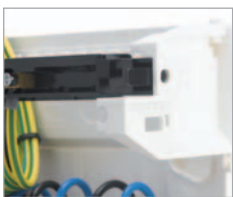
all the products of the offer conform to IEC 60439-3
All products conform to the ROHS and WEEE directives.

Expert tips



Easy, comfortable cable management and fixing

- Patented integrated cable fixation using clips or standard cable-ties.
- Reversible clips for:
 - holding wires outside working area for maximum ease.
 - fixing wires in place on completion.



Snapper mounted terminals

- Instant installation of snapper supporting quick connect or brass terminals.
- Instant installation of snapper supporting quick connect terminals.
- Instant installation of snapper supporting brass terminals.



Self-explanatory box

All product features clearly indicated by illustrations in the box itself.



More cabling space makes the job quicker and easier

- Ease of installation guaranteed by greater space for working and cabling between MD and terminals.
- More cabling space behind DIN rails simplifies wiring..



Easily accessible DIN rail key-hole fixation points saves time and trouble

- Key-hole screw mounting for quick rail assembly.
- Key-hole screw mounting located outside the MD area for instant access and no dismantling.



Connect enclosures vertically or horizontally

Connection tabs allow secure, flush horizontal and vertical joining of enclosures.



Fast, secure cover fitting with ¼ turn

- 90° screws for securing cover.
- Built-in, quick-secure screws cannot be lost.



Unbreakable door hinges

- New design makes broken hinges a thing of the past.
- Same door for flush and surface mounted enclosures.
- Left or right facing, symmetrical door installation.

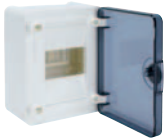
Surface mounted distribution box from 1 to 4 rows, from 4 to 72 modules with plain or transparent door for devices up to 70 mm installation depth. Door can be fitted on right or left without dismantling the cover: optional lock with keys. Door opens up to 180°. Cable entries for cable, conduit and trunking.

Components included:

- Brass screw-type
- Pole fillers
- Directly fixed DIN rails to the wall box let to have room enough for wiring behind them. New patented marking system (except in 4 and 8 Mod. Enclosures)

- Door protected by a plastic film.
- Carton packaging
- Towers to fix cable ties for clear cable, management are included, cable retaining clips are optional (VZ699N)

NEW



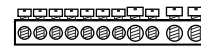
VS104TD

golf VS 1 row 4

- Wall niche: 184 x 138 x 99 mm

Description	Type of door
1 x 4 mod.	Plain
1 x 4 mod.	Transparent

Brass terminals PE + N

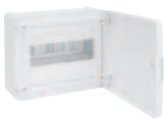


blanking strips



2 + 1/2

25 mm ²	16 mm ²	10 mm ²	Best.nr.
-	2	2	VS104PD
-	2	2	VS104TD



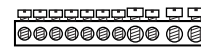
VS108PD

golf VS 1 row 8

- Wall niche: 184 x 210 x 99 mm

Description	Type of door
1 x 8 mod.	Plain
1 x 8 mod.	Transparent

Brass terminals PE + N

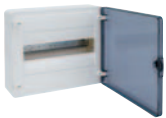


blanking strips



2 + 1/2

25 mm ²	16 mm ²	10 mm ²	Best.nr.
-	3	3	VS108PD
-	3	3	VS108TD



VS112TD

golf VS 1 row 12

- Wall niche: 252 x 282 x 99 mm

Description	Type of door
1 x 12 mod.	Plain
1 x 12 mod.	Transparent

Brass terminals PE + N



blanking strips



2 + 1/2

25 mm ²	16 mm ²	10 mm ²	Best.nr.
-	3	5	VS112PD
-	3	5	VS112TD



VS212PD

golf VS 1 row 24

- Wall niche: 377 x 282 x 99 mm

Description	Type of door
2 x 12 mod.	Plain
2 x 12 mod.	Transparent

Brass terminals PE + N



blanking strips



2 x (2 + 1/2)

25 mm ²	16 mm ²	10 mm ²	Best.nr.
-	4	6	VS212PD
-	4	6	VS212TD



VS312TD

golf VS 1 row 36

- Wall niche: 500 x 282 x 99 mm

Description	Type of door
3 x 12 mod.	Plain
3 x 36 mod.	Transparent

Brass terminals PE + N



blanking strips



3 x (2 + 1/2)

25 mm ²	16 mm ²	10 mm ²	Best.nr.
-	5	6	VS312PD
-	5	6	VS312TD



VS412PD

golf VS 1 row 48

- Wall niche: 647 x 282 x 99 mm

Description	Type of door
4 x 12 mod.	Plain
4 x 12 mod.	Transparent

Brass terminals PE + N



blanking strips



4 x (2 + 1/2)

25 mm ²	16 mm ²	10 mm ²	Best.nr.
-	6	8	VS412PD
-	6	8	VS412TD

Technical data:

- IP rating:
IP30 without door
IP40 with door
IK07
- Isolation Class II
- White colour RAL 9010
- Rated current:
for devices up to 63 A
- Rated insulation:
400 V A.C./50 Hz
- Glow wiring test: 650°C

Standards:

all the products of the offer conform to IEC 60439-3
All products conform to the ROHS and WEEE directives.

NEW


VS118TD

golf VS 1 row 18

- Wall niche: 257 x 426 x 72 mm

Brass terminals PE + N



blanking strips



Description	Type of door	25 mm ²	16 mm ²	10 mm ²	Best.nr.
1 x 18 mod.	Plain	1	4	5	VS118PD
1 x 18 mod.	Transparent	1	4	5	VS118TD



VS218PD

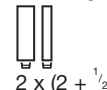
golf VS 2 row 36

- Wall niche: 377 x 90 x 99 mm

Brass terminals PE + N



blanking strips



Description	Type of door	25 mm ²	16 mm ²	10 mm ²	Best.nr.
2 x 18 mod.	Plain	1	6	7	VS218PD
2 x 18 mod.	Transparent	1	6	7	VS218TD



VS318PD

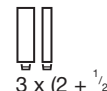
golf VS 3 row 54

- Wall niche: 500 x 390 x 99 mm

Brass terminals PE + N



blanking strips



Description	Type of door	25 mm ²	16 mm ²	10 mm ²	Best.nr.
3 x 18 mod.	Plain	1	7	8	VS318PD
3 x 18 mod.	Transparent	1	7	8	VS318TD



VS418PD

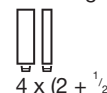
golf VS 4 row 72

- Wall niche: 647 x 390 x 99 mm

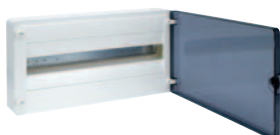
Brass terminals PE + N



blanking strips



Description	Type of door	25 mm ²	16 mm ²	10 mm ²	Best.nr.
4 x 18 mod.	Plain	1	8	9	VS418PD
4 x 18 mod.	Transparent	1	8	9	VS418TD



VS122TD

golf VS 1 row 22

- Wall niche: 252 x 462 x 99 mm

Brass terminals PE + N



blanking strips



Description	Type of door	25 mm ²	16 mm ²	10 mm ²	Best.nr.
1 x 22 mod.	Plain		4	6	VS122PD
1 x 22 mod.	Transparent		4	6	VS122TD

New golf boxes include an excellent range of accessories, from the cable retainers to hollow wall anchor fixations, every single feature is conceived to save time and increase simplicity of mounting. It is also possible

to find spare parts and additional accessories to the range, such as keys, locks and doors. Another great accessory for flush mounted enclosures is the range of stickers in different colours and structures (like dark

wood, light brown wood, aluminium, stone, red, blue, gold...) to bring the enclosure out of the dark corner and integrate

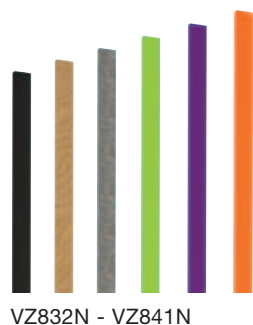
NEW



Spare doors (Spare parts)

- Doors made of plastic material
- Plain doors RAL 9010

Description	For the box	PE	Ref. transparent	Ref. plain
Spare doors	VF/VS104	1	VZ621N	VZ601N
Spare doors	VF/VS108	1	VZ622N	VZ602N
Spare doors	VF/VS112	1	VZ623N	VZ603N
Spare doors	VF/VS212	1	VZ624N	VZ604N
Spare doors	VF/VS312	1	VZ625N	VZ605N
Spare doors	VF/VS412	1	VZ626N	VZ606N
Spare doors	VF/VS118	1	VZ627N	VZ607N
Spare doors	VF/VS218	1	VZ628N	VZ608N
Spare doors	VF/VS318	1	VZ629N	VZ609N
Spare doors	VF/VS418	1	VZ630N	VZ610N



self adhesive deco sticker for VF boxes

coil of 3 m x 8 mm

Description	Colour	PE	Ref. plain
Deco sticker	orange	1	VZ832N
Deco sticker	black matt	1	VZ833N
Deco sticker	yellow	1	VZ834N
Deco sticker	granit black	1	VZ835N
Deco sticker	wood wanut	1	VZ836N
Deco sticker	wood beech	1	VZ837N
Deco sticker	gold	1	VZ838N
Deco sticker	aluminium	1	VZ839N
Deco sticker	cabon	1	VZ840N
Deco sticker	chrom	1	VZ841N

VZ832N - VZ841N



VZ794N

Lock

Supplied with 2 keys

Description	PE	Ref. plain
Lock	1	VZ794N



VZ696N

Hollow wall lever set

Description	PE	Ref. plain
Hollow wall lever set	4 pieces	VZ696N



VZ699N

Cable guides VF / VS

Description	PE	Ref. plain
Cable guides VF / VS	4 pieces	VZ699N



VZ789N

Class II caps VS
and horizontal assembly kit

Description	PE	Ref. plain
Class II caps VS	4 pieces	VZ789N



VZ786N

Brick wall fixation brackets

Description	PE	Ref. plain
Hollow wall lever set	4 pieces	VZ786N



VZ787N

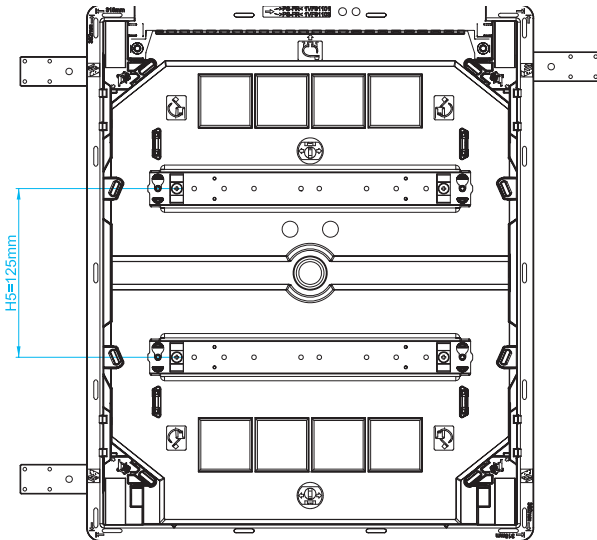
Transparent label holder VF / VS 450 mm / Labelling sticker

Description	PE	Ref. plain
Transparent label holder	4 pieces	VZ787N
Labelling sticker	4 pieces	VZ788N

Cable entries

- top/bottom

One side cable entry slide, knockout-type, (VF104... and VF108... - NO slider). The other side pre cuts with diameters 20 mm, 25 mm, 32 mm and 40 mm the wall box is 180° turnable (slider can be placed at top or bottom).

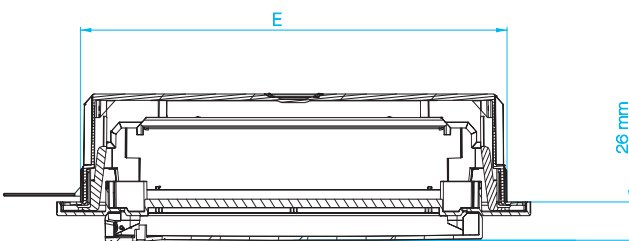
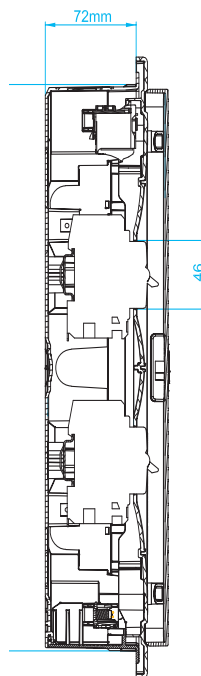
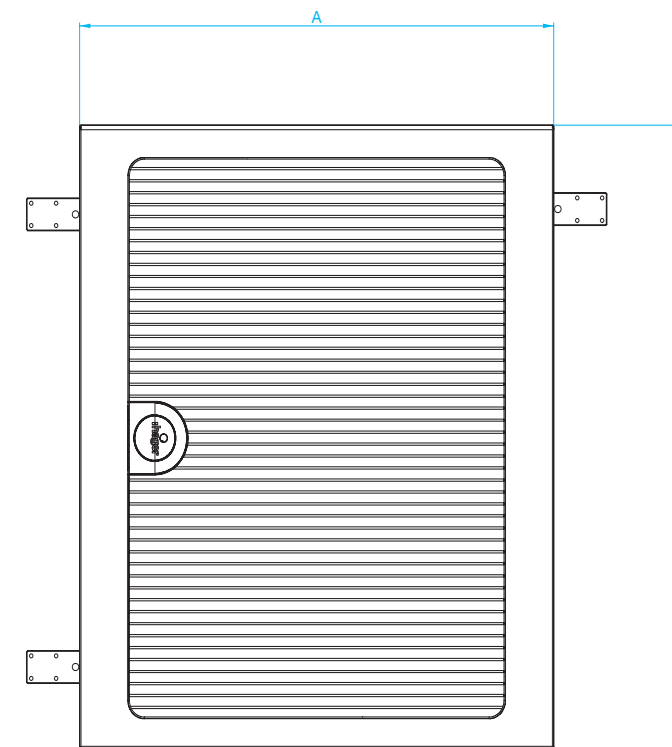


- side

Each one knockout Ø 25 mm on the left and right in the upper and lower connection space. As of 2 rows, knockouts Ø 25 mm on the left and right between the device rows. (no knockouts at 4 and 8 module enclosures).

Ref.		Dimension // mm			
		Frame		Wall niche	
		A	H	E	F
VF104...	1 row 4	204	225	170	189
VF108...	2 row 8	275	225	242	189
VF112...	1 row 12	352	293	318	257
VF212...	2 row 12	352	418	318	382
VF312...	3 row 12	352	543	318	507
VF412...	4 row 12	352	688	318	652
VF118...	1 row 18	460	293	426	257
VF218...	2 row 18	460	418	426	382
VF318...	3 row 18	460	543	426	507
VF418...	4 row 18	460	688	426	652
VF122...	1 row 22	532	293	498	257

For the wall niche, these dimensions are minimal.



For hollow wall, the cavity wall section should be:

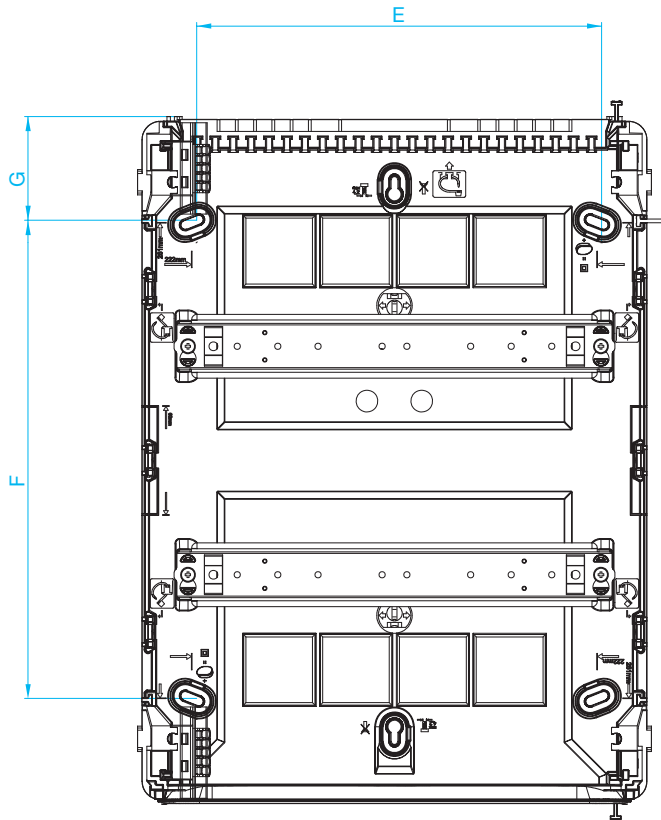
Ref.	E	F
VF104...	170	189
VF108...	242	189
VF112...	318	257
VF212...	318	382
VF312...	318	507
VF412...	318	652
VF118...	426	257
VF218...	426	382
VF318...	426	507
VF418...	426	652
VF122...	498	257

Depth must always be 72 mm min.

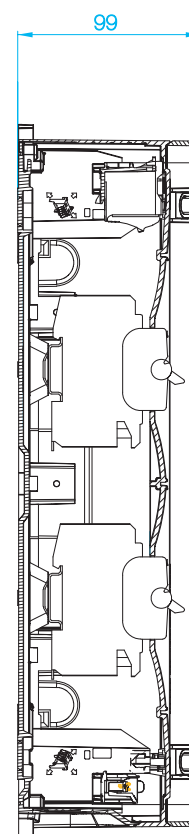
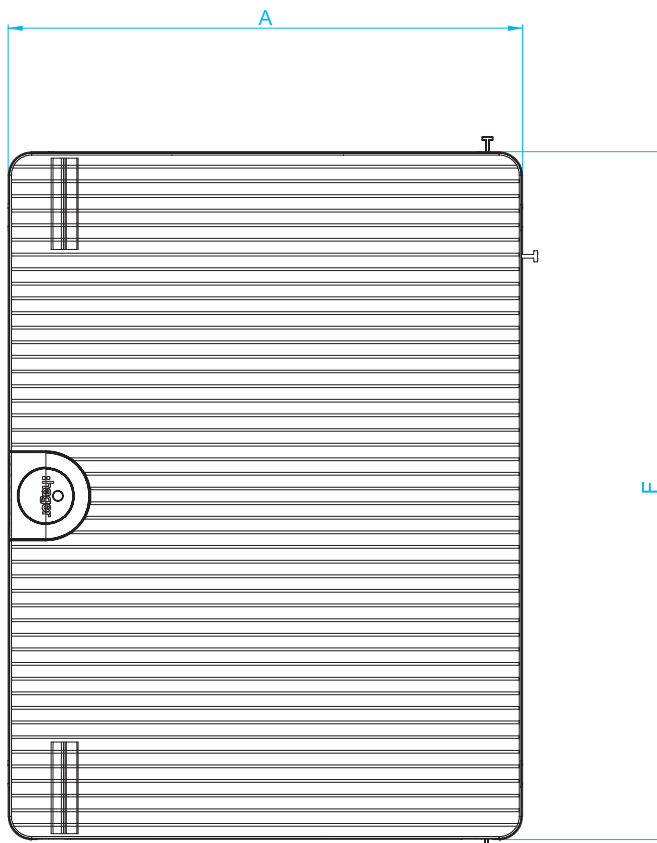
Cable entries

- top/bottom

One side cable entry optimised for use of trunking, knockout-type.
The other side pre cuts with diameters 20 mm, 25 mm, 32 mm and 40 mm the wall box is 180° turnable.



Ref.		Dimension		Wall fixation		
		A	H	E	F	G
VS104...	1 row 4	137,5	183,5	101	68	58
VS108...	2 row 8	209,5	183,5	173,5	68	58
VS112...	1 row 12	281,5	251,5	221,5	135,5	58
VS212...	2 row 12	281,5	376,5	221,5	260,5	58
VS312...	3 row 12	281,5	500	221,5	385,5	58
VS412...	4 row 12	281,5	646,5	221,5	491	78
VS118...	1 row 18	389,5	251,5	329,5	135,5	58
VS218...	2 row 18	389,5	376,5	329,5	260,5	58
VS318...	3 row 18	389,5	500	329,5	385,5	58
VS418...	4 row 18	389,5	646,5	329,5	491	78
VS122...	1 row 22	461,5	251,5	401,5	135,5	58



Hager Electro s.r.o.
Poděbradská 56/186
180 66 Praha 9, Hloubětín
Telefon +420 281 045 721
Telefax +420 266 107 310

