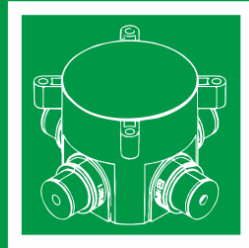
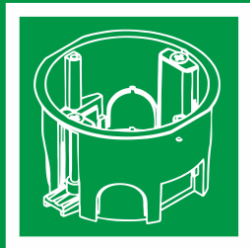


HEGEL



MASTER

Frame. Perfection.



 HEGEL

MASTER

Complementary monoblock series in harmony with Master design.
Saving time and money for professional installers.



Size does matter

ALFA

Surface mounted



17 mm

Base frame is 17 mm of height only



HEGEL



NOT HEGEL
(Legrand Quteo)



NOT HEGEL
(Schneider Etud)

Surface mounted market in Russia is rather significant
due to installation culture



Size does matter

ALFA IP 44



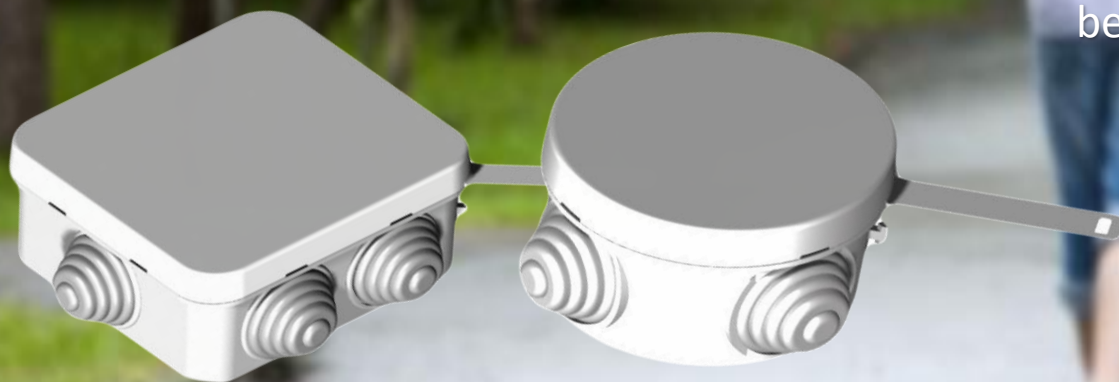
Surface mounted high IP series, very compact and attractive design



The cable glands HEGEL



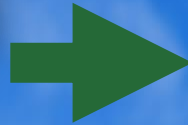
According to references of customers, Hegal features a superior contact between the cable gland and the incoming wire



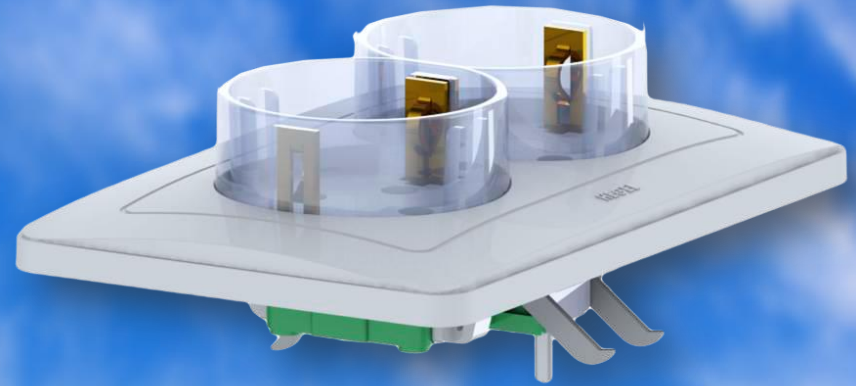
HEGEL AIR

Design Concept

Our classical double outlet,
The height defined by standards.



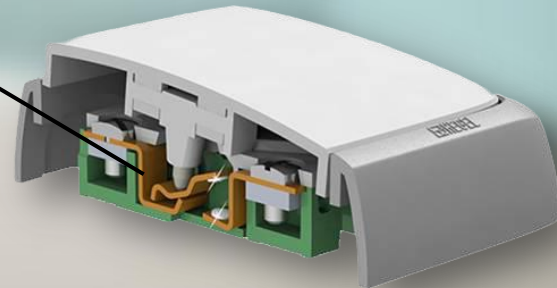
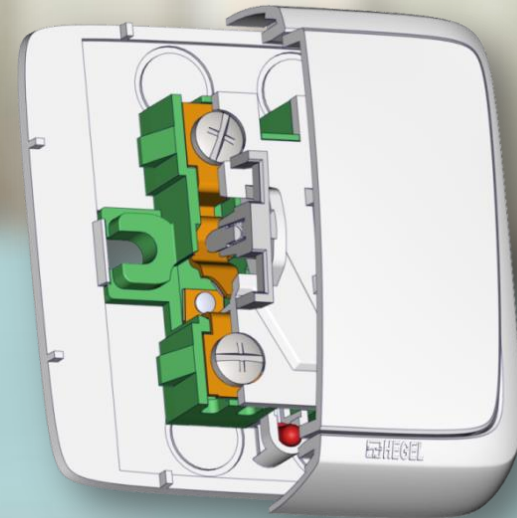
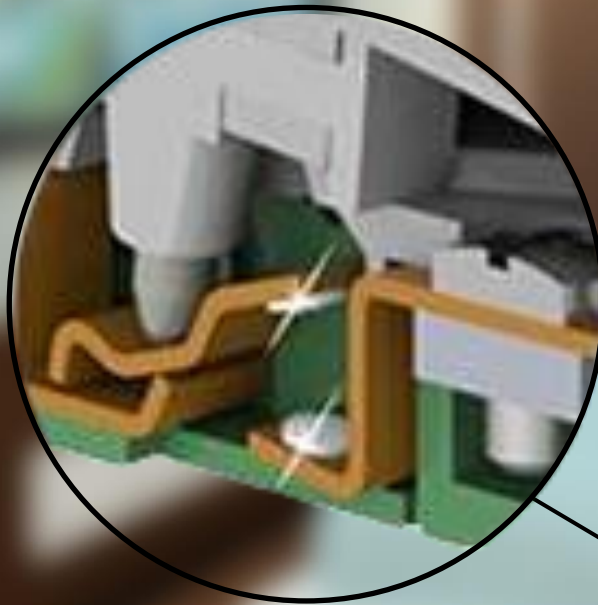
We refined the solution,
HEGEL AIR



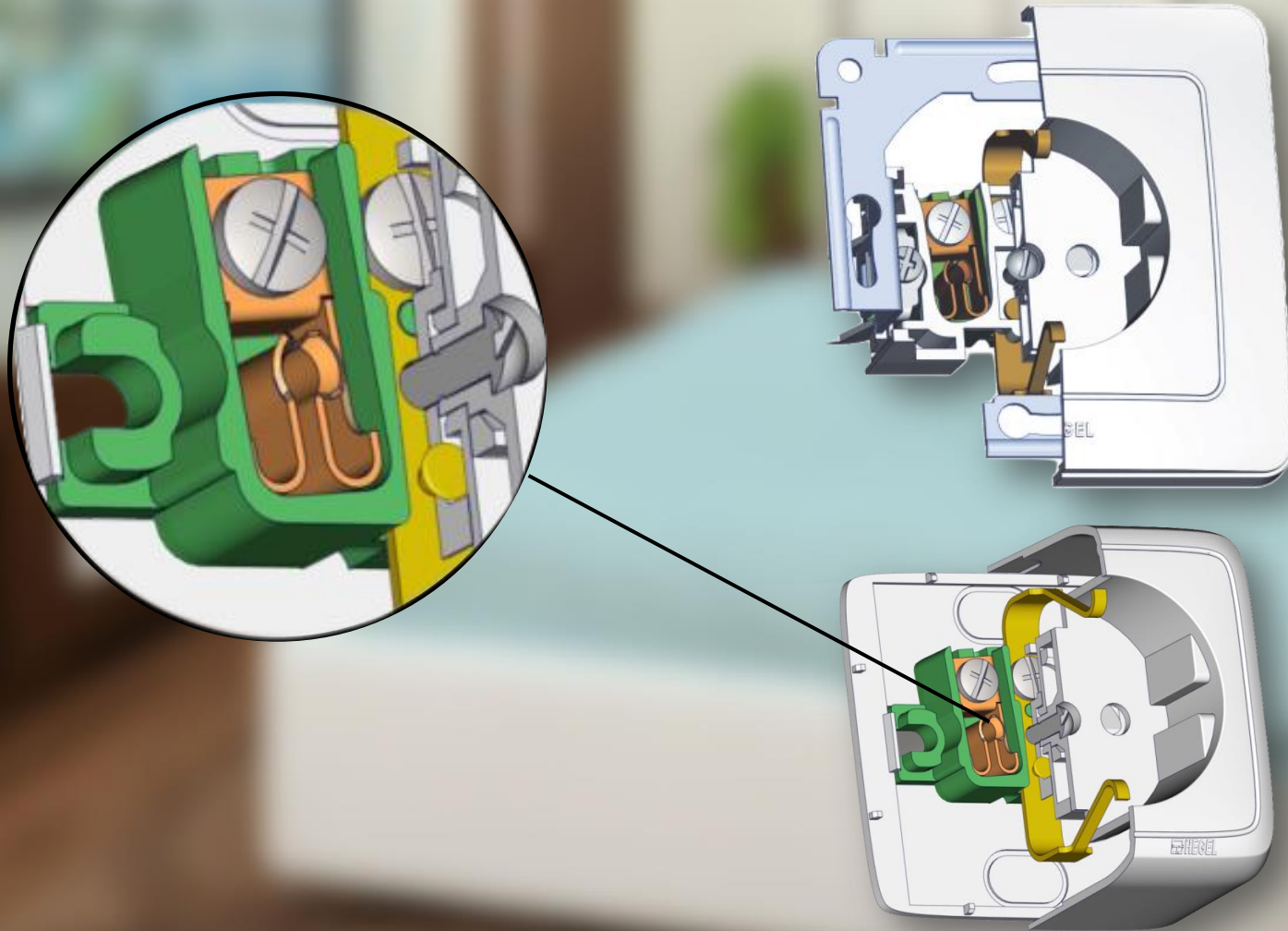
HEGEL AIR creates a perception of more Space



Whole silver contacts provide safety and reliability also for heavy reactive loads



Special fluorine–bronze alloy used for contact plate to ensure contact for different sizes of pins of plugs and high life time



**No flickering with energy saving or LED lamps.
Our innovative indicator lamp solution suppresses flickering
in darkness.**



**No frightened children
and irritated seniors**



Saves also electricity



Colors and Coatings



Boxes and Enclosures

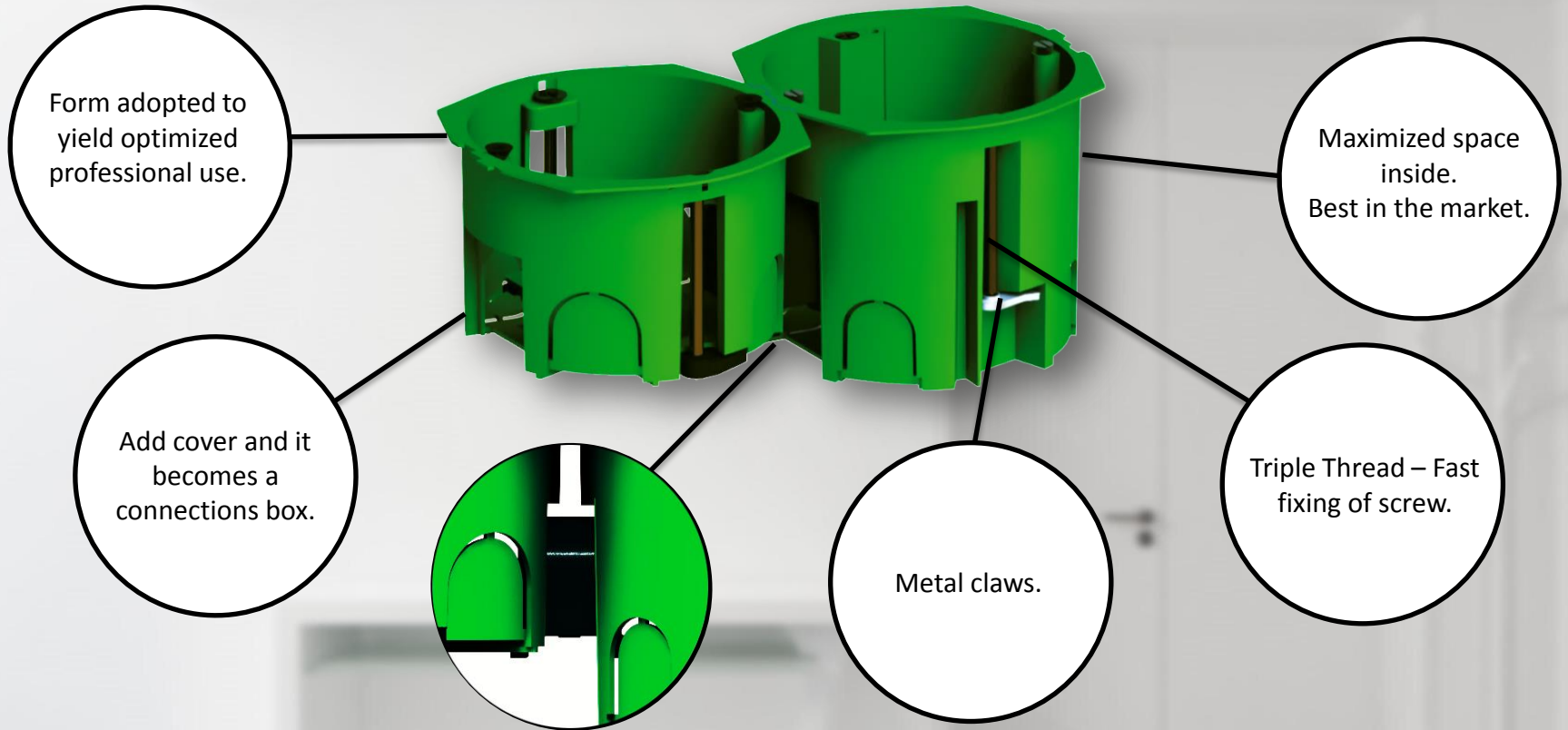


Widest assortment among the Russian manufactures



Every box by Hegel is piece of art designed for the professionals

e.g. Box for hollow wall installation



850°C

Strictly follows standards concerning non-flammability!

To our knowledge, no other domestic manufacturer comply with standards.

HEGEL IS:

- The complete technological set up from product design to manufacturing of moulds and stamps.
- In-house the complete production/process set up from raw material to packaging.
- Automated lines for painting and water based film coating.
- More than 60 Injection moulding machines from 90 to 1450 tons. 24/7 shift mode.
- Metal stamping, galvanic coating, and others.
- High customer service level supported by up-to-date processes and technology.



info@hegelbox.ru
<http://www.hegelbox.ru>