



Installation Materials

BUSCH-JAEGER

Power and productivity
for a better world™ **ABB**

Contents

ABB Busch-Jaeger Installation Materials	3
Surface-mounted junction boxes	4
Piping materials and conduit extensions	8
Covers for mounting and junction boxes	12
Earthing materials	14
Mounting boxes	18
Index	25

ABB Busch-Jaeger Installation Materials

ABB Busch-Jaeger Oy is your old partner, with a new name and strengths, manufacturing, developing and marketing Installation Materials and Wiring Accessories from Finland since 1980.

Our installation materials have been designed to work together and suit a wide range of installation demands. Our range covers complete systems for flush- and surface mounting installation materials.

The mounting and junction boxes and their accessories have been developed in collaboration with electricians throughout Scandinavia. We highly value the feedback we receive from you on our products and we wish to continue receiving your thoughts about the design and development of our products also in the future.

Pekka Tervo

Product Manager for Installation
Materials



SURFACE-MOUNTED JUNCTION BOXES

– for dry and damp areas

Surface-mounted junction boxes for damp areas are manufactured using the two-component technique, and their installation is quick and easy.



For a variety of needs and uses

Our product range includes surface-mounted junction boxes for both dry and damp conditions. The junction box selection is complimented by a range of additional materials to ease and expedite installation.



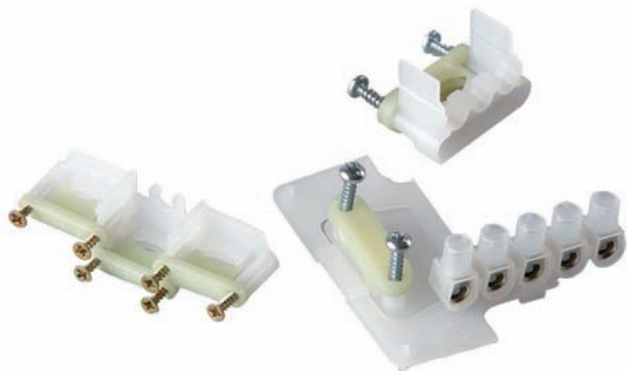
The AP9 junction box

Junction boxes are manufactured using the two-component system and include easily perforated knockouts for cables up to 17 mm in thickness. Simultaneously, the knockouts' films operate as a gasket. The junction boxes belong to the IP55 protection class. Our selection include white, grey and black junction boxes.



Materials for surface-mounted junction boxes

If necessary, the boxes can be equipped with separate strain reliefs and connectors.



Surface-mounted junction boxes

Junction box IP20

The AP6 square junction box is spacious and easy to wire. The box is equipped with an insulated 5-way connector. The transparent wire connector makes it easy to ensure sufficient wire depth. The maximum wire capacity per connector is 4 x 2,5 mm² or 6 x 1,5 mm². The box has 6 knock-outs, 2 of which are in the bottom.

TYPE	CODE	DESCRIPTION	PACK.QTY
AP6	64 100 16 020 062	Junction box IP20	10/100
AP6.2	64 186 77 308 055	Junction box, grey, 60x60 mm, incl. connector	10/100



Junction box IP20

The AP12 junction box has two 3-pole insulated 6 mm² connectors. The base plate offers a choice of eight different connection points for the connectors. In the bottom of the box there are three knock-outs. The cover has knock-outs in the corners and on the long sides of the cover. The maximum wire capacity per connector is 8 x 1,5 mm² or 5 x 2,5 mm².

TYPE	CODE	DESCRIPTION	PACK.QTY
AP12	64 100 16 020 123	Junction box IP20	10/50
AP12.1	64 186 77 301 452	without conn.	10/50



Surface-mounted junction box IP 65

The AP75 junction box (2,5 mm², 400 V) is equipped with fixed, two-component membranelid cable entries, 10 in the sides and three on the bottom. It has a stiff frame. Suitable for cables up to Ø 18. The locks box by snapping and can be opened by inserting a screwdriver into the opening slots. Pull-out brackets make it possible to mount it to a conductive base. The box can also be sealed. Mounting temperature -15...+60 °C.

TYPE	CODE	DESCRIPTION	PACK.QTY
AP75	64 100 16 125 200	Surface-mounted junction box IP65	5/50



Junction box IP 55

The square junction box AP9 (2,5 mm², 400 V) is equipped with 10 membrane cable entries (Ø 17 mm) in the sides, and two in the bottom. Cables are easy to connect by simply inserting the stripped ends through the inlets. The box locks by snapping and can be opened by inserting a screwdriver (for example) into the opening slots - no screws are needed. The box can be furnished with the strain-reliefs AS9, AS9.1 and AS9.3. Fits Ø 6 - 15,5 mm cable. VDE-approved. Mounting temperature is -15...+60 °C.

TYPE	CODE	DESCRIPTION	PACK.QTY
AP9	64 100 16 125 095	Junction box IP55 white	5/50
AP9M	64 186 77 329 906	Junction box IP55 ,black	5/50
AP9/G	64 100 16 125 088	Junction box IP55, grey	5/50



Junction box IP55

The square junction box AP10 (6,0 mm², 400 V) is equipped with 10 membrane cable entries (Ø 19 mm) in the sides, and two on the bottom. Cables are easy to connect by simply inserting the stripped ends through the inlets. The box locks by snapping and can be opened by inserting a screwdriver (for example) into the opening slots - no screws are needed. The box can be furnished with the strain-reliefs AS9, AS9.1 and AS9.3. Mounting temperature is -15...+60 °C.

TYPE	CODE	DESCRIPTION	PACK.QTY
AP10	64 100 16 125 101	Junction box IP55 white	5/50
AP10/G	64 186 77 307 287	Junction box IP55, grey	5/50



Surface-mounted junction boxes

Junction box IP44

The round junction box AP7 (2,5 mm², 400 V) is similar to the AP9 and the AP10 and is equipped with 10 membrane cable entries (Ø 17 mm) and two in the bottom. Cables are easy to connect by simply inserting the stripped ends through the inlets. The cover is locked with two screws at distance of 78 mm. The box can be furnished with strain-reliefs AS9, AS9.1 and AS9.3.

TYPE	CODE	DESCRIPTION	PACK.QTY
AP7	64 100 16 125 170	Junction box IP44	5/50



Junction box with connection cover IP44

The round, dual-component connection box AP7.1 (2,5 mm², 400 V) is equipped with 10 membrane cable entries (17 mm) and two in the bottom. The cover of the box is equipped with three membrane seals (one Ø 20mm and two Ø 16mm) and with three strain-reliefs.

TYPE	CODE	DESCRIPTION	PACK.QTY
AP7.1	64 100 16 125 187	Junction box with connection cover	50/600



Accessories for surface mounting junction boxes

Accessories for AP75

Strain-relief for junction box AP75.

TYPE	CODE	DESCRIPTION	PACK.QTY
AS12.3	64 100 16 125 217	Strain relief	10/250



Strain-relief and connector

The junction boxes AP7, AP9 and AP10 can be furnished with the strain-relief AS9 for Ø 6 - 19 mm cables. The strain-relief AS9 has a 5-pole connector (2,5 mm²). The maximum wire capacity per connector is 4 x 2,5 mm² or 6 x 1,5 mm².

TYPE	CODE	DESCRIPTION	PACK.QTY
AS9	64 100 16 125 903	Strain-relief and connector	1/50



Strain-reliefs

The junction boxes AP7, AP9 and AP10 can be furnished with the strain-relief AS9.3 for three cables Ø 6-13,5 mm and the strain-relief AS9.1 for one cable Ø 10,5-20 mm.

TYPE	CODE	DESCRIPTION	PACK.QTY
AS9.1	64 100 16 125 927	Strain-relief for 1 cable	1/50
AS9.3	64 100 16 125 910	Strain-relief for 3 cables	1/50



PIPING MATERIALS AND CONDUIT EXTENSIONS

Piping materials and conduit extensions provide for flexibility and ease in a wide range of installation possibilities.



Piping materials

Piping materials and conduit extensions compliment the product line. Together with the mounting and junction boxes and their materials, these products form an extensive system to ease the electrician's workload.



Pre-bent curve conduit extensions

We continuously develop our products to better correspond to the wishes of electricians. Pre-bent curve conduit extensions ease installation work, especially at cast-in-place sites and in element factories. We have extended our range of curve conduit extensions and now offer them for pipe sizes of 16-50 mm with various bending angles.



Piping materials

Conduit extensions

Conduit extensions are used to join plastic conduits together. Each extension has a locking device.

TYPE	CODE	DESCRIPTION	PACK.QTY
AJ16	64 100 11 301 166	Ø 16 mm	100/500
AJ20	64 100 11 301 203	Ø 20 mm	100/500
AJ25	64 100 11 301 258	Ø 25 mm	50/250
AJ32	64 100 11 301 326	Ø 32 mm	25/200
AJ40	64 100 11 301 401	Ø 40 mm	20/100
AJ50	64 100 11 301 500	Ø 50 mm	50/1800



Bushing flange

The AS20 bushing insulator is used to attach conduit extensions, which have locking springs and a diameter of 20 mm, to a concrete casting mould. After the mould has been dismantled, an installation pipe of the same size can be connected to the insulator, and the piping can be continued.

TYPE	CODE	DESCRIPTION	PACK.QTY
AS20	64 100 11 301 746	For conduit extension Ø 20 mm	50/250



Piping materials

Conduit adaptor

The AJ16.20 conduit adaptor is used when changing the plastic conduit size from 16mm to 20mm.

TYPE	CODE	DESCRIPTION	PACK.QTY
AJ16.20	64 100 11 305 164	Ø 16 mm / 20 mm	100/500



The Flexible conduit extension

The Ø 20 flexible conduit extension can be bent to any desired angle. The spacious, wide curve section facilitates easy wire installation. There is a locking device at each end.

TYPE	CODE	DESCRIPTION	PACK.QTY
AJP20	64 100 11 301 838	Ø 20 mm	25/250



Bushing insulators

Bushing insulators are designed for feedthrough situations in electrical conduits in concrete structures cast on-site, and are used for linking conduits in the ceiling structure to conduits in non-bearing inside walls leading directly to a switch or a plug socket, or to a junction box on the wall.

TYPE	CODE	DESCRIPTION	PACK.QTY
AJ9.16	64 100 11 301 562	Ø 16 mm	50/250
AJ10.20	64 100 11 301 609	Ø 20 mm	50/250
AJ10.25	64 100 11 301 616	Ø 25 mm	25/150



Bushing insulators

Bushing insulators are used, for instance, for linking conduits in the ceiling structure to conduits in non-bearing inside walls in concrete structures cast on-site. It is easy to extend trunking from the bushings by means of pre-bent curve conduit extensions. The bushings feature a protective foil that prevents the casting from entering the conduit.

TYPE	CODE	DESCRIPTION	PACK.QTY
AJ113	64 186 77 300 189	Ø 32 mm, 90°	20/100
AJ114	64 186 77 300 196	Ø 40 mm, 90°	20/100
AJ115	64 186 77 300 202	Ø 50 mm, 90°	20/100
AJ155	64 186 77 300 332	Ø 32 mm, 45°	20/100



Conduit end piece

A plug is supplied with each conduit end piece. The AJ5.16 conduit end piece is primarily used for the termination of plastic conduits in concrete casting. After casting, the conduit end piece is cut to the desired length at one of the cut-off grooves, and the trunking is continued with a conduit of the same size. The plug protects the conduit from dirt, concrete and foreign particles.

TYPE	CODE	DESCRIPTION	PACK.QTY
AJ5.16	64 100 11 301 661	Ø 16 mm	25/250
AJ5.20	64 100 11 301 708	Ø 20 mm	25/250
PMR38	64 100 11 310 915	For Ø 16/ 20/ 25 mm	100/1000



Bushing insulators

This conduit end piece is used for the termination of plastic conduits in concrete casting. The end piece is cut to the desired length after casting. The trunking is continued with a conduit of the same size. The plug prevents the casting from entering the conduit. It is easy to extend trunking from the end pieces by means of pre-bent curve conduit extensions.

TYPE	CODE	DESCRIPTION	PACK.QTY
JMKL25.11	64 186 77 300 516	Ø 25 mm, sleeve on the plugged end	20/100
JMKL25.12	64 186 77 300 561	Ø 25 mm, sleeve on both ends	20/100
JMKL32.11	64 186 77 300 523	Ø 32 mm, sleeve on the plugged end	20/100



Piping materials

Curve conduit extension

The conduit bend comes with locking glue and is used when the conduit is difficult to bend. The most common bend is 90°, but the range also includes other angles.

TYPE	CODE	DESCRIPTION	PACK.QTY
JMKL16	64 100 11 110 164	Ø 16 mm	10/300
JMKL20	64 100 11 110 201	Ø 20 mm	10/300
JMKL25	64 100 11 110 256	Ø 25 mm	10/100
JMKL32	64 100 11 110 324	Ø 32 mm	10/100
JMKL40	64 100 11 110 409	Ø 40 mm	5/50
JMKL50	64 100 11 110 508	Ø 50 mm	5/25



Pre-bent curve conduit extensions 45°

Pre-bent curve conduit extensions with a 45° angle are used alongside the AJ10.20, AJ10.25 and AJ155 bushing insulators and mounting and junction boxes, for example when casting in situ place and producing precast concrete. Our curve conduit extensions are equipped with a sleeve for continuing the conduit from the product's long end.

TYPE	CODE	DESCRIPTION	PACK.QTY
JMKL20.1	64 186 77 300 226	Ø 20 mm, 45° sleeve on the long end	20/100
JMKL25.1	64 186 77 300 233	Ø 25 mm, 45° sleeve on the long end	20/100
JMKL32.1	64 186 77 300 240	Ø 32 mm, 45° sleeve on the long end	5/50



Pre-bent curve conduit extensions 90°

Pre-bent curve conduit extensions with a 90° angle and small radius are used alongside the conduit end pieces AJ5.20, JMKL25.11 and JMKL32.11, the bushing insulators AJ5.20, AJI13, AJI14 and AJI15 and the mounting and junction boxes, for example when casting in situ place and producing precast concrete. Our curve conduit extensions are equipped with a sleeve for continuing the conduit from the product's long end.

TYPE	CODE	DESCRIPTION	PACK.QTY
JMKL20.5	64 186 77 300 448	Ø 20 mm, 90°	20/200
JMKL25.2	64 186 77 300 455	Ø 25 mm, 90°	20/100
JMKL32.2	64 186 77 300 462	Ø 32 mm, 90°	20/100
JMKL40.1	64 186 77 300 479	Ø 40 mm, 90°	10/50
JMKL50.1	64 186 77 300 486	Ø 50 mm, 90°	10/50



Pre-bent curve conduit extensions 90°

Pre-bent curve conduit extensions with a 90° angle and large radius are used alongside the conduit end pieces AJ5.20, JMKL25.11 and JMKL32.11, the bushing insulators AJ5.20, AJI13, AJI14 and AJI15 and mounting and junction boxes, for example when casting in situ place and producing precast concrete. Our curve conduit extensions are equipped with a sleeve for continuing the conduit from the product's long end.

TYPE	CODE	DESCRIPTION	PACK.QTY
JMKL20.3	64 186 77 300 400	Ø 20 mm, 90°	20/100
JMKL20.4	64 186 77 300 424	Ø 20 mm, 90°	20/100



Pre-bent curve conduit extensions 90°

The curve conduit extension is equipped with a sleeve for continuing the conduit from the product's short end.

TYPE	CODE	DESCRIPTION	PACK.QTY
JMKL20.2	64 186 77 300 356	Ø 20 mm, 90°	10/100



COVERS FOR MOUNTING AND JUNCTION BOXES

– covers for both fixed and semi-fixed installation

For a final look, we offer covers for both dry and damp areas.



Connection cover AK12.2

The AK12.2 is a connection cover for junction boxes. It can be used for both flush and surface mounting (AP7 box). The cover features three membrane seals, centre panel \varnothing 20 mm (max. 5 x 6 mm) and side panels \varnothing 16 mm. The cover has three strain reliefs.



Covers for mounting boxes

Connection cover, IP 44

The AK4 is a dual-component conversion cover (85 x 85 mm) for use in splash-proof and dry conditions. The screw distance is 60 mm. For cables \varnothing 6,0 - 15,0 mm. The cover is equipped with two strain reliefs.

TYPE	CODE	DESCRIPTION	PACK.QTY
AK4	64 100 11 525 753	Connection cover, IP 44	5/50



Connection cover, IP 44

The AK12.2 is a connection cover for junction boxes. It can be used for both flush and surface mounting (AP7 box). The cover features three membrane seals, centre panel \varnothing 20 mm (max. 5 x 6 mm) and side panels \varnothing 16 mm. The cover has three strain reliefs.

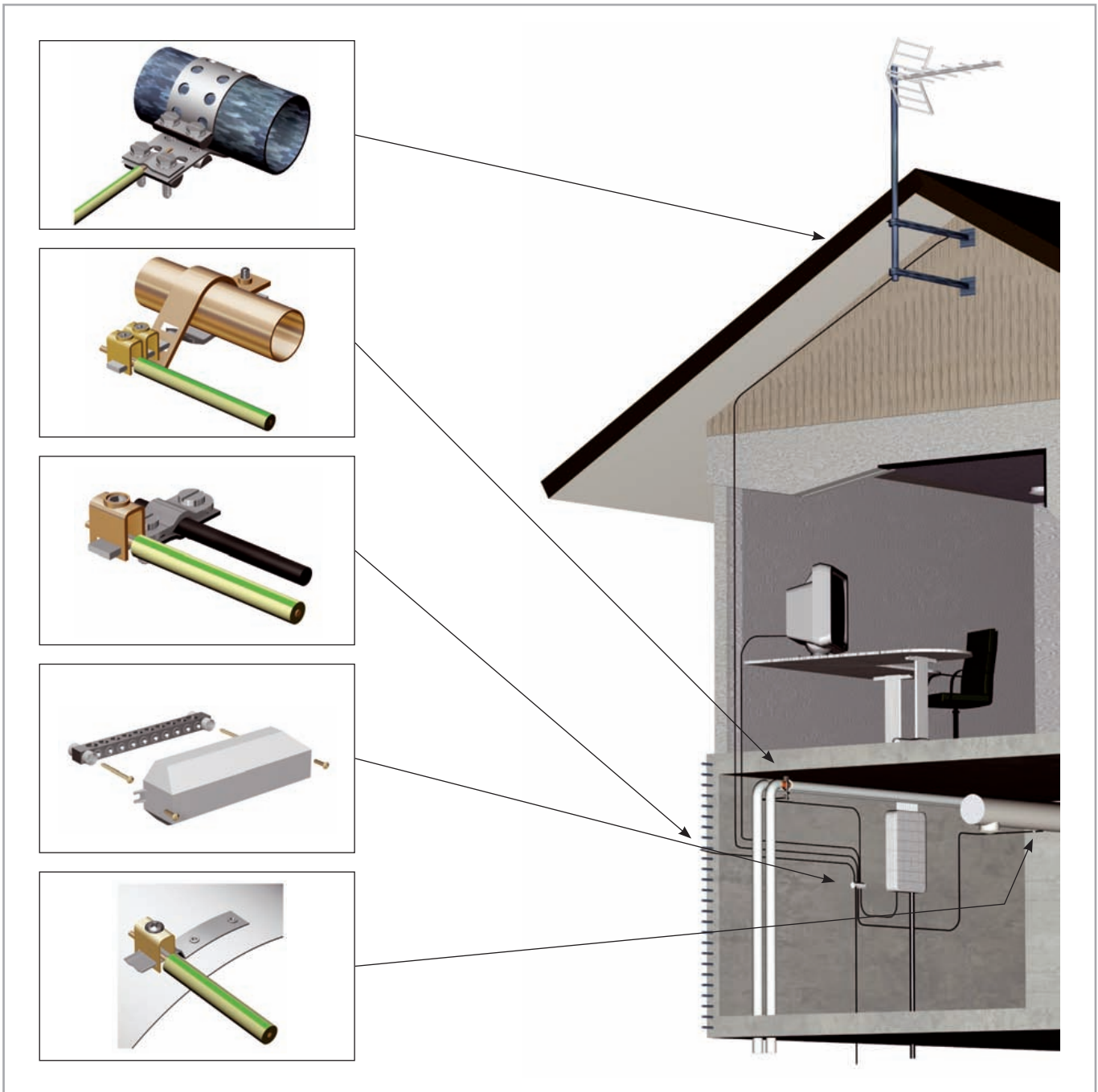
TYPE	CODE	DESCRIPTION	PACK.QTY
AK12.2	64 186 77 311 680	Connection cover, IP 44	10/50



EARTHING MATERIALS

- reliable earthing

The comprehensive range of tough earthing materials offers ways of handling the earthing reliability of a building. Our product range includes options for a wide variety of uses.



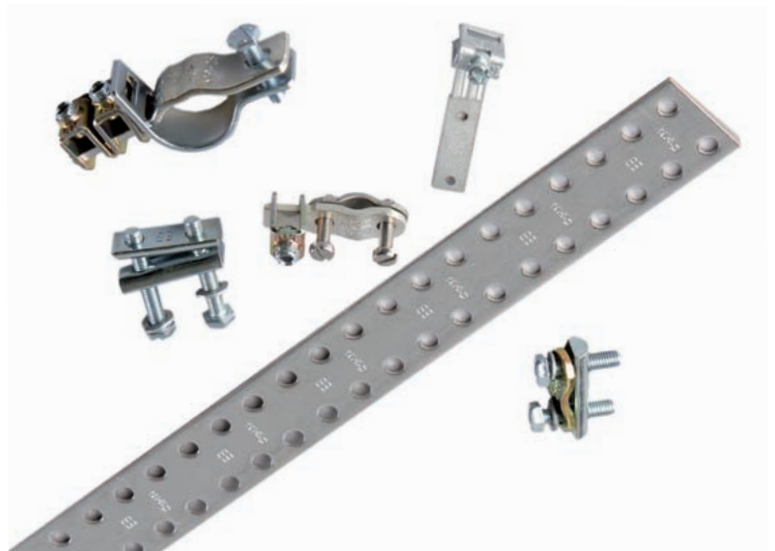
Tough security

Earthing materials are made tough and durable to guarantee reliable earthing and to complete safe electrical installation in a building.



Terminals complete an earthing system

Earthing terminals guarantee the reliable earthing of pipeworks and concrete reinforcements. The product range includes terminals in a variety of sizes to meet the earthing needs of a building.



The correct potential equalizer bar every time

You can easily pick the correct-sized potential equalizer bar to form the basis of an operating earthing system.



Earthing materials

Strap clamp, terminal

The earthing conductors, max. 35 mm² Cu, are connected to the various pipework using an earthing strap PP36 with a strap clamp AM2 and terminal AM3. In case a 50 mm² or 70 mm² Cu-conductor is connected to the earthing block, both ends of the earthing strap must be pressed together with the terminal to get sufficient conductivity. The terminal and the strap clamp are made of zinc-plated and yellow passivated steel. The 6 mm screws are tightened with a 10 mm wrench. The earthing strap is made of tinned annealed copper 1,5 mm thick.

TYPE	CODE	DESCRIPTION	PACK.QTY
AM2	64 100 50 260 950	Strap clamp	20/100
AM3	64 100 50 260 967	Terminal	20/100



Earthing strap

The earthing conductors, max. 35 mm² Cu, are connected to the various pipework using an earthing strap PP36 with a strap clamp AM2 and terminal AM3. In case a 50 mm² or 70 mm² Cu-conductor is connected to the earthing block, both ends of the earthing strap must be pressed together with the terminal to get sufficient conductivity. The terminal and the strap clamp are made of zinc-plated and yellow passivated steel. The 6 mm screws are tightened with a 10 mm wrench. The earthing strap is made of tinned annealed copper 1,5 mm thick.

TYPE	CODE	DESCRIPTION	PACK.QTY
PP36	64 100 50 260 974	Earthing strap	20/-



Potential equalizer bars

The potential equalizer bars are intended for the connection of system earthing conductors in buildings. Into AM4 it is possible to connect 8 pcs max. 50 mm² and 2 pcs max. 70 mm² conductors. Into AM5 it is possible to connect 5 pcs max. 50 mm² conductors. Both bars are made of tinned copper and fitted with zinc-plated steel screws and tracking-resistant thermoplastic spacers.

TYPE	CODE	DESCRIPTION	PACK.QTY
AM4	64 100 19 130 959	Potential equalizer bar	5/50
AM5	64 100 19 130 966	Potential equalizer bar	5/50



Protective cover

In surface mounting, a cover is used to protect AM4 and AM5. The cover has provisions for the conductors to fit to the bar's spacing and it is fixed on the wall with two screws.

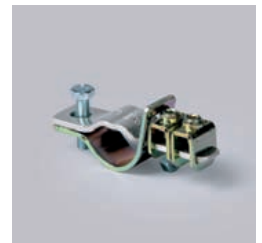
TYPE	CODE	DESCRIPTION	PACK.QTY
PMR576	64 100 19 130 973	Protective cover	25/1575



Earthing terminal

The earthing terminal AM8 is mainly used for connecting the earthing conductors to various pipework in sizes Ø 8 - 28 mm. It is possible to adjust the terminal to suit to four different pipe thicknesses. The terminal has two 35 mm² pillar terminals. The conductor bar is made of tinned copper and the strap of zinc-plated steel. The pillar terminals are of zinc-plated and yellow passivated steel.

TYPE	CODE	DESCRIPTION	PACK.QTY
AM8	64 100 19 130 478	Earthing terminal D8-28	1/50



Earthing terminal

The earthing terminal AM9 is mainly used to connect earthing conductors to various kinds of pipework, in sizes Ø 6-15 mm. The earthing terminal can also be used to connect earthing conductors to a building's concrete reinforcement. A suitable concrete reinforcement bar has a diameter of between 8-15 mm. The earthing conductor has one 4-35 mm² strap. If there is a need for a 25 mm² copper connector, two AM9 terminals must be used in parallel. The conductor bar is made of tinned copper and the strap is made of zinc-plated, yellow-passivated steel.

TYPE	CODE	DESCRIPTION	PACK.QTY
AM9	64 100 19 130 492	Earthing terminal D6-15	1/50



Earthing materials

Earthing terminal

The AM11 earthing terminal is used, for example, for the potential equalization of air-conditioning and ventilation ducts. The earthing terminal has a single $>10 \text{ mm}^2$ Cu terminal. The terminal bar is made of tinned copper. It is affixed with two pull rivets (pop-rivets), $\varnothing 3,2 \text{ mm}$, in the air-conditioning or ventilation duct and the protective lead is connected to the connector attachment point. The conductors having a cross-section of Cu 1,5 - 10 mm^2 are suited to a conductor connector equipped with conductor protection.

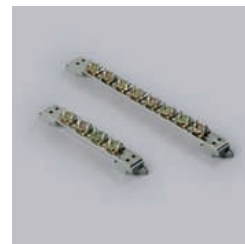
TYPE	CODE	DESCRIPTION	PACK.QTY
AM11	64 100 19 130 515	Earthing terminal	1/50



Potential equalizer bar

The AM6.1 potential equalizer bar AM6.1 is used in the connecting of inside system earthings in housing and in industry. In the AM6.1 there are 4 pcs of Cu-connectors KG 20 (16 - 185 mm^2) and the possibility to add Al-connectors KG 43 or KG 16 (35 - 120 mm^2). The AM6.3 is furnished with 8 pcs of Cu-connectors. Conductors Cu 16 - 70 mm^2 or Cu 95 - 185 mm^2 . The tightening torque of Al-connectors is 30 - 40 Nm and for Cu-connectors 17 - 20 Nm.

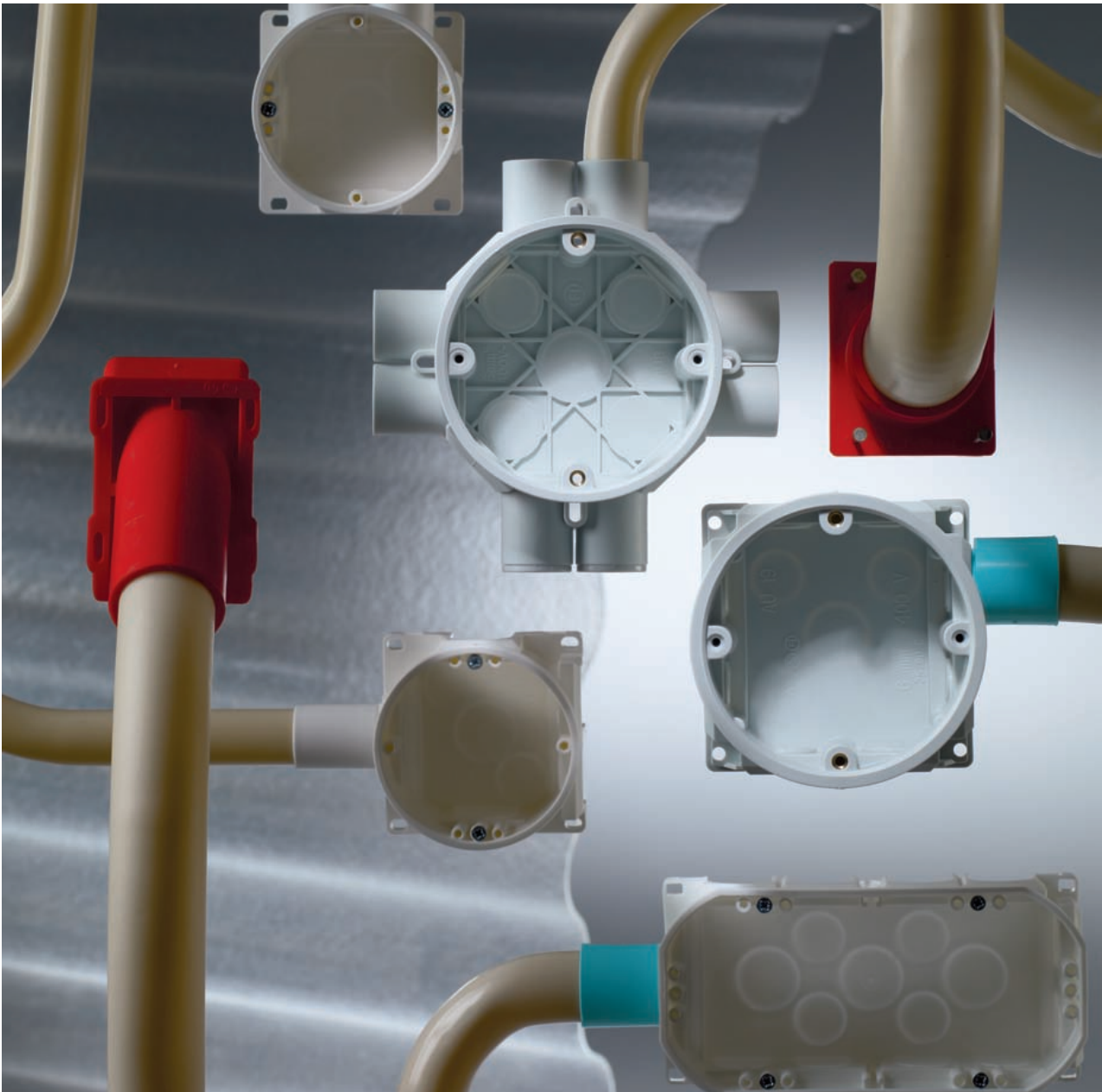
TYPE	CODE	DESCRIPTION	PACK.QTY
AM6.1	64 100 19 130 409	Potential equalizer bar	1/10
AM6.3	64 100 19 130 423	Potential equalizer bar	1/-



MOUNTING BOXES

– all-round AU mounting boxes

Installation and the logistics of your work is exceptionally easy and fast because you only need a few of our mounting box models on site. With the use of our accessories, the mounting boxes are suitable for a wide range of uses. Naturally, all mounting boxes comply with all installation material standards.



Mounting boxes

Mounting box

The mounting box is designed for installation in all new buildings and in prefabricated building elements, and can be used with cast materials. It has a total of five knock-out inlets, two of which are on the same side. The bottom of the box provides access for two rear inlets. The boxes can be connected to each other with the PMR474 interconnector.

TYPE	CODE	DESCRIPTION	PACK.QTY
AU3.2	64 100 11 523 643	Mounting box	100/2400



Mounting box, branched 2-way

The characteristics of this box are the same as the AU3.2; the difference is in the outlets. The box has 2 branch outlets for \varnothing 20 conduits, one of which comes with a removable reducer for \varnothing 16 conduits. There are also 3 knock-out on the side, and 2 on the bottom.

TYPE	CODE	DESCRIPTION	PACK.QTY
AU5.2	64 100 11 523 032	Mounting box, branched 2-way	100/2400



Low mounting box, branched 2-way

The box has 2 branch outlets with locking devices for \varnothing 20 conduits, one of which has a reducer for \varnothing 16 conduits. The reducer is easy to remove if necessary. A separate inlet can be attached to the side opposite the fixed outlets. The bottom of the box has two inlets. Inlets cannot be attached to the sides of the box, but the sides can be used to connect boxes with each other using a PMR474 interconnector cut level with the bottom of the box. The height of the box is 38 mm.

TYPE	CODE	DESCRIPTION	PACK.QTY
AU6.2	64 100 11 523 155	Low mounting box, branched 2-way	100/2400



Brick wall mounting box

The device offers the AU3.2 mounting box modified with a 28 mm deep extension ring for use in walls built of bricks that have pipe ducts. No branch outlets are required at the bottom of the box - straight access makes wire laying easier. There is no need to bend the conduits.

TYPE	CODE	DESCRIPTION	PACK.QTY
AU3.32	64 100 11 523 674	Brick wall mounting box	50/1600



Double mounting box

The box AU17.2 has knock-outs for 11 inlets on the side, and 6 on the bottom. If necessary, the box may be divided in two by using partition plate PMR345.

TYPE	CODE	DESCRIPTION	PACK.QTY
AU17.2	64 100 11 523 896	Double mounting box	50/1200
PMR345	64 100 11 523 940	Partition plate	100/1000



Mounting box for board walls, 10 to 17 mm board

The AUS15.12 is a front-mounted mounting box for board walls. This box comprises a flexible fixing handle for 10 to 17 mm boards with large supporting surfaces. The installation hole diameter is 70 mm (box drill AT1). There are four inlets with strain reliefs on the bottom of the box for installing 5 x 2.5 mm MMJ cables. In addition, there are four knock-outs for inlets AN9.20 or ANK14.20 on the side of the box. The boxes can be interconnected (c/c 71 mm) using the AS28 interconnector, through which conductors can also be conveyed from one box to another.

TYPE	CODE	DESCRIPTION	PACK.QTY
AUS15.12	64 186 77 332 265	Mounting box for board walls, 10 to 17 mm board	40/1800



Mounting boxes

Mounting box for board walls, 22 to 29 mm board

The AUS15.24 is a front-mounted mounting box for board walls. This box comprises a flexible fixing handle for 22 to 29 mm boards with large supporting surfaces. The installation hole diameter is 70 mm (box drill AT1). There are four inlets with strain reliefs on the bottom of the box for installing 5 x 2.5 mm MMJ cables. The boxes can be interconnected (c/c 71 mm) using the AS28 interconnector, through which conductors can also be conveyed from one box to another.

TYPE	CODE	DESCRIPTION	PACK.QTY
AUS15.24	64 186 77 332 272	Mounting box for 22-29mm boards	40/1800



Mounting box for board walls

The AUS15.2 mounting box is used in buildings that have board walls. The holes are made with a hole saw (AT1, or equivalent). After the required conduit or cable inlets have been knocked out, the box is inserted in the hole. Turning the screws clockwise tightens the fastener against the board and secures the box in place. Conduits and cables are attached by using inlets that are pushed through from inside the box.

TYPE	CODE	DESCRIPTION	PACK.QTY
AUS15.2	64 100 11 523 841	Mounting box for board walls	50/2250



More uses for mounting boxes with accessories

21

With mounting box accessories, you can equip the boxes according to your requirements, and you can modify the mounting boxes for a wide range of installation uses. You only need a few basic mounting box types and accessories on site. Thanks to the compatibility of the additional materials, you also save time.



Accessories for mounting boxes

Extension ring

Three extension rings are available for the standard mounting boxes. The lowest, PMR94 is 13 mm deep.

TYPE	CODE	DESCRIPTION	PACK.QTY
PMR94	64 100 11 523 902	Extension ring	50/500



Extension ring

The PMR410 is 28 mm deep and is designed for use in, for example, brick walls.

TYPE	CODE	DESCRIPTION	PACK.QTY
PMR410	64 100 11 523 964	Extension Ring	50/3150



Extension ring

The PMR399 is 60 mm deep and is often used in renovating old houses, when adding 50 mm thermal insulation to inside walls while leaving existing conduit installations in place. The extension ring is attached to the old mounting box so as to extend it to the level of the new boarding.

TYPE	CODE	DESCRIPTION	PACK.QTY
PMR399	64 100 11 523 971	Extension ring	50/1600



Extension ring for AU17.2

The AK17 extension ring is 13 mm deep, and is used to modify the AU17.2 mounting box.

TYPE	CODE	DESCRIPTION	PACK.QTY
AK17	64 100 11 523 919	Extension ring	50/2250

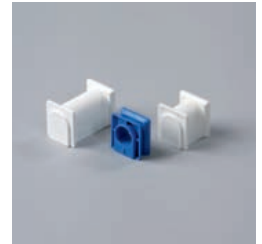


Accessories for mounting boxes

Interconnectors

Mounting boxes may be joined side by side by using a PMR474 interconnector. The PMR490 and PMR502 are used to link together mounting boxes when groups of installation boxes that house weak and strong current circuits are installed under different coverplates. The centreplate distance of mounting boxes can be set at 85 mm when using a PMR490 yoke. With the PMR502 connecting piece PMR502 the distance between box centres is 100 mm.

TYPE	CODE	DESCRIPTION	PACK.QTY
PMR474	64 100 11 527 740	C/C 71 mm	100/1000
PMR490	64 100 11 527 887	C/C 85 mm	50/250
PMR502	64 100 11 527 924	C/C 100 mm	50/500



Interconnector, board walls

The AS28 interconnector can be one with the AUS15.12 and AUS15.24 mounting boxes. The boxes can be interconnected (c/c 71 mm) using the interconnector AS28, through which conductors can also be conveyed from one box to another.

TYPE	CODE	DESCRIPTION	PACK.QTY
AS28	64 186 77 332 289	Interconnector	50/500



Interconnector, board walls

The AS15 interconnector can one with the AUS15.2 mounting box. AS15 is pushed through the boxes from inside, and is used to guide the cable from box to another.

TYPE	CODE	DESCRIPTION	PACK.QTY
AS15	64 100 11 523 803	Interconnector, board walls	50/500



Inlets

Inlets are equipped with locking devices which prevent conduit disconnection. The conduit can be unfastened by twisting it. The inlets can be used both in mounting boxes and junction boxes. The inlets have various colours for various conduits: Ø 16 blue, Ø 20 white and Ø 25 green.

TYPE	CODE	DESCRIPTION	PACK.QTY
AN16	64 100 11 527 542	Ø 16mm	100/500
AN20	64 100 11 527 573	Ø 20 mm	100/500
AN25	64 100 11 527 252	Ø 25 mm	100/500



Angle inlet

The ANK20 angle inlet is equipped with locking device which prevents conduit disconnection. The conduit can be unfastened by twisting it. Angle inlet ANK20 is both right and left handed. The inlet can be used both in mounting boxes and in junction boxes.

TYPE	CODE	DESCRIPTION	PACK.QTY
ANK20	64 100 11 527 221	Ø 20 mm	100/500



Back inlets

Back inlets are fitted with a locking device. The conduit can be unfastened by twisting it. The inlets can be used in both in mounting boxes and in junction boxes.

TYPE	CODE	DESCRIPTION	PACK.QTY
ANP16	64 100 11 527 146	Back inlet D16	100/500
ANP20	64 100 11 527 184	Back inlet D20	100/500
ANP20.1	64 100 11 527 214	Angle back inlet D20	100/500



Accessories for mounting boxes

Strain relief inlet

The AS12 strain-relief inlet is used in conduitless flush mounting to fasten 5 x 2,5 mm² cables to the mounting boxes or junction boxes. The boxes are installed in the standard way in the board or other structure. (Conduitless flush mounting is acceptable in hollow structures under special circumstances.)

TYPE	CODE	DESCRIPTION	PACK.QTY
AS12	64 100 11 525 784	Strain relief inlet	100/500



Strain relief

The strain relief is used to attach MMJ-type cables to e.g. the AU3.2 mounting box. The strain relief attaches to the inlet groove on the mounting box. The strain relief tabs, which protrude slightly above the open end of the mounting box, create a sufficient gap between the box and the cable trunking cover. At the same time, they prevent the cable trunking cover from bumping into the fixing ring of a socket outlet or equivalent live device.

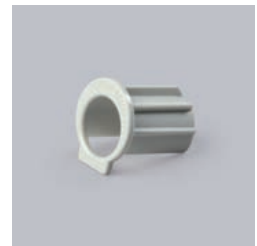
TYPE	CODE	DESCRIPTION	PACK.QTY
AS12.2	64 100 11 525 777	Strain relief	100/500



Reducer

Facilitates easy inlet reduction from Ø 20 mm to Ø 16 mm when a Ø 16 conduit needs to be connected into a Ø 20 inlet.

TYPE	CODE	DESCRIPTION	PACK.QTY
AN20.16	64 100 11 527 306	Reducer 20 / 16 mm	100/500



Inlets

The AUS15.2 and the AUS15.12 mounting boxes can be fitted with an AN9.20 or an ANK14.20 inlet.

TYPE	CODE	DESCRIPTION	PACK.QTY
AN9.20	64 100 11 527 351	Inlet 20 mm	100/500
ANK14.20	64 100 11 527 405	Angle inlet 20 mm	100/500



Support

The PMR577 support is used with the mounting boxes. The support is used for the installation of boxes into light, non-bearing walls that are constructed on site, with interlayers of 42, 45, 66, 70, 90 and 95 mm. It is possible to use an inlet or a strain-relief (conduitless flush mounting) with the support. By joining two PMR577 supports together with a PMR474 interconnector, the box groups can be separated from each other under different covering plates. Then the centre distance of the box groups is 85 mm.

TYPE	CODE	DESCRIPTION	PACK.QTY
PMR577	64 100 11 527 764	42 - 90 mm	20/500
PMR577.65	64 186 77 307 256	42 - 65 mm	100/500



Wall clamp

Wall clamps offer a rapid means of attaching a mounting box to a 12-13 mm thick board wall. The hole is made with an AT5 hole saw (Ø 74 mm), and the board clamps are placed on either side of the board. The box is pushed through the hole from behind the board, and becomes locked between the board clamps.

TYPE	CODE	DESCRIPTION	PACK.QTY
AS8.13	64 100 11 527 689	for 12 - 13 mm	100/1000



Accessories for mounting boxes

Installation adaptor

A box is attached to its base from the inside with a PMR135 installation adaptor through the opened centre blank. The screw-head is covered with the plug in the adaptor. The installation adaptor is used to eliminate any measurement errors made during panelling.

TYPE	CODE	DESCRIPTION	PACK.QTY
PMR135	64 100 11 527 894	For mounting-/ and junction boxes	100/2500



Screws

Appliances are attached directly to the box using self-tapping PLP4 screws. The screws fit all standard mounting boxes. If necessary, it is possible to raise the appliance up to 10 mm by using longer PLP5 screws. The screws fit all standard mounting boxes.

TYPE	CODE	DESCRIPTION	PACK.QTY
PLP4.100	64 186 77 335 150	3 x 16 mm, 100 pcs	1/100
PLP5.100	64 186 77 335 167	3 x 29 mm, 100 pcs	1/50



Protective cover

Protective cover for 1-gang mounting boxes.

TYPE	CODE	DESCRIPTION	PACK.QTY
PMR1441	64 100 11 525 074	Protective cover for the mounting boxes AU3.2 / 5.2 / 6.2 / 3.32	100/1000



Index of product types

Product	Page	Product	Page	Product	Page	Product	Page	Product	Page
AJ10.20	10	AM2	16	AP12.1	6	AU3.32	19	JMKL32.2	11
AJ10.25	10	AM3	16	AP6	6	AU5.2	19	JMKL40	11
AJ16	9	AM4	16	AP6.2	6	AU6.2	19	JMKL40.1	11
AJ16.20	10	AM5	16	AP7	7	AUS15.12	19	JMKL50	11
AJ20	9	AM6.1	17	AP7.1	7	AUS15.2	20	JMKL50.1	11
AJ25	9	AM6.3	17	AP75	6	AUS15.24	20	PLP4.100	24
AJ32	9	AM8	16	AP9	6	JMKL16	11	PLP5.100	24
AJ40	9	AM9	16	AP9/G	6	JMKL20	11	PMR135	24
AJ5.16	10	AN16	22	AP9M	6	JMKL20.1	11	PMR1441	24
AJ5.20	10	AN20	22	AS12	23	JMKL20.2	11	PMR345	19
AJ50	9	AN20.16	23	AS12.2	23	JMKL20.3	11	PMR38	10
AJ9.16	10	AN25	22	AS12.3	7	JMKL20.4	11	PMR399	21
AJ113	10	AN9.20	23	AS15	22	JMKL20.5	11	PMR410	21
AJ114	10	ANK14.20	23	AS20	9	JMKL25	11	PMR474	22
AJ115	10	ANK20	22	AS28	22	JMKL25.1	11	PMR490	22
AJ155	10	ANP16	22	AS8.13	23	JMKL25.11	10	PMR502	22
AJP20	10	ANP20	22	AS9	7	JMKL25.12	10	PMR576	16
AK12.2	13	ANP20.1	22	AS9.1	7	JMKL25.2	11	PMR577	23
AK17	21	AP10	6	AS9.3	7	JMKL32	11	PMR577.65	23
AK4	13	AP10/G	6	AU17.2	19	JMKL32.1	11	PMR94	21
AM11	17	AP12	6	AU3.2	19	JMKL32.11	10	PP36	16

Index of EAN codes

EAN	Page	EAN	Page	EAN	Page	EAN	Page	EAN	Page
64 100 11 110 164	11	64 100 11 523 032	19	64 100 11 527 306	23	64 100 16 125 910	7	64 186 77 300 400	11
64 100 11 110 201	11	64 100 11 523 155	19	64 100 11 527 351	23	64 100 16 125 927	7	64 186 77 300 424	11
64 100 11 110 256	11	64 100 11 523 643	19	64 100 11 527 405	23	64 100 19 130 409	17	64 186 77 300 448	11
64 100 11 110 324	11	64 100 11 523 674	19	64 100 11 527 542	22	64 100 19 130 423	17	64 186 77 300 455	11
64 100 11 110 409	11	64 100 11 523 803	22	64 100 11 527 573	22	64 100 19 130 478	16	64 186 77 300 462	11
64 100 11 110 508	11	64 100 11 523 841	20	64 100 11 527 689	23	64 100 19 130 492	16	64 186 77 300 479	11
64 100 11 301 166	9	64 100 11 523 896	19	64 100 11 527 740	22	64 100 19 130 515	17	64 186 77 300 486	11
64 100 11 301 203	9	64 100 11 523 902	21	64 100 11 527 764	23	64 100 19 130 959	16	64 186 77 300 516	10
64 100 11 301 258	9	64 100 11 523 919	21	64 100 11 527 887	22	64 100 19 130 966	16	64 186 77 300 523	10
64 100 11 301 326	9	64 100 11 523 940	19	64 100 11 527 894	24	64 100 19 130 973	16	64 186 77 300 561	10
64 100 11 301 401	9	64 100 11 523 964	21	64 100 11 527 924	22	64 100 50 260 950	16	64 186 77 301 452	6
64 100 11 301 500	9	64 100 11 523 971	21	64 100 16 020 062	6	64 100 50 260 967	16	64 186 77 307 256	23
64 100 11 301 562	10	64 100 11 525 074	24	64 100 16 020 123	6	64 100 50 260 974	16	64 186 77 307 287	6
64 100 11 301 609	10	64 100 11 525 753	13	64 100 16 125 088	6	64 186 77 300 189	10	64 186 77 308 055	6
64 100 11 301 616	10	64 100 11 525 777	23	64 100 16 125 095	6	64 186 77 300 196	10	64 186 77 311 680	13
64 100 11 301 661	10	64 100 11 525 784	23	64 100 16 125 101	6	64 186 77 300 202	10	64 186 77 329 906	6
64 100 11 301 708	10	64 100 11 527 146	22	64 100 16 125 170	7	64 186 77 300 226	11	64 186 77 332 265	19
64 100 11 301 746	9	64 100 11 527 184	22	64 100 16 125 187	7	64 186 77 300 233	11	64 186 77 332 272	20
64 100 11 301 838	10	64 100 11 527 214	22	64 100 16 125 200	6	64 186 77 300 240	11	64 186 77 332 289	22
64 100 11 305 164	10	64 100 11 527 221	22	64 100 16 125 217	7	64 186 77 300 332	10	64 186 77 335 150	24
64 100 11 310 915	10	64 100 11 527 252	22	64 100 16 125 903	7	64 186 77 300 356	11	64 186 77 335 167	24

Contact us

ABB Busch-Jaeger Oy

Porvoon Sisäkehä 2

P.O. Box 16

FI-06101 Porvoo, Finland

Phone: +358 10 22 11

Fax: +358 10 22 54255

www.abb.com