

MARAMA

SOL v.1.1

OFF-GRID SYSTEM

MARAMA SOL OFF-GRID SYSTEM

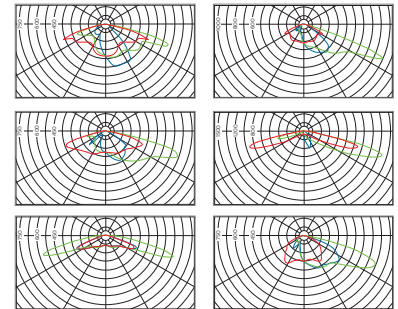
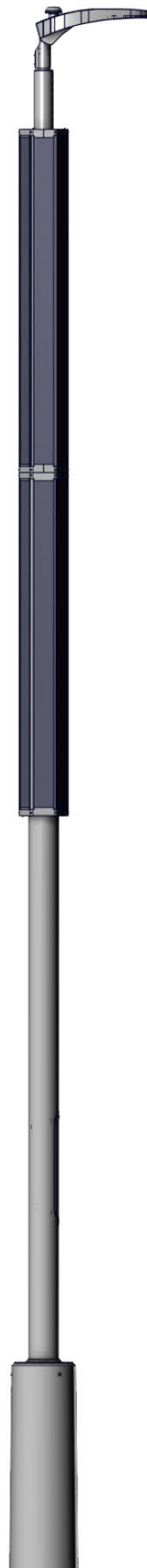
Models: MS-1M/6000/360/MH/S, MS-2M/4000/360/MH/S,
MS-1M/6000/360/MH, MS-2M/4000/360/MH,
MS-1M/6000/720/MH, MS-2M/4000/720/MH,
MS-2M/6000/720/MH

GAME CHANGER IN SOLAR LIGHTING

MARAMA SOL OFF GRID STREET LIGHT SYSTEM is designed specifically for outdoor off-grid applications where electricity from the grid is not available or is very unreliable.

- MARAMA SOL luminaries are compact, easy to transport, easy to assemble, and easy to transform or upgrade using a system of modular components.
- Because it is an autonomous, self-managing, it requires little to no maintenance.
- MARAMA SOL functions on light-on-demand principle, turning light on when necessary, changing light intensity when appropriate, and optimising energy consumption when possible.
- The users have the option to intervene and change the system's plan. The lighting regime can be altered by just a couple clicks on a remote control.
- Photovoltaic panels are mounted vertically which optimises the collection of solar power and prevents the gathering of dirt, snow and bird droppings.
- The use of cutting-edge components and dimming functionality makes this solar system effective even in Northern countries lacking sunshine.

Good to know: MARAMA SOL is a future proof system, ready for ECOLIGHT's smart solar solution based on IoT (Internet of things) technology - ECOMAS.



Made in EU



Best price-quality ratio



Environmentally friendly



Remote control



Automatic switch on/off function



Programmable



Long life time



Configurable dimming timer



Generously equipped solution



REGI NB 485



* in preparation










Ecolight[™]
Save simple.

ELEKTROS TAUPYMO SPRENDIMAI, UAB

Moletu str. 13, Didzioji Riese (PC "Link Moletu"), Vilnius distr. 14028, Lithuania
Liepu str. 15, Linksmakalnis, Kaunas distr. 53290, Lithuania
E: info@ecolight.lt T: +370 5 2328207 F: +370 5 2784262
W: www.ecolight.lt, www.ecolight-lights.co.uk

GENERAL TECHNICAL SPECIFICATIONS

Model	MS-1M/ 6000/360/MH/S	MS-2M/ 4000/360/MH/S	MS-1M/ 6000/360/MH	MS-2M/ 4000/360/MH	MS-1M/ 6000/720/MH	MS-2M/ 4000/720/MH	MS-2M/ 6000/720/MH
Design type							
EAN	4772049003026	4772049005594	4772049002913	4772049005600	4772049002920	4772049005617	4772049002937
Wattage	up to 30W	up to 40W	up to 30W	up to 40W	up to 30W	up to 40W	up to 60W
Street light model	MARAMA SOL 30W 360WH NI- MH SOUTH	MARAMA SOL 40W 360WH NI- MH RD SOUTH	MARAMA SOL 30W 360WH NI- MH	MARAMA SOL 40W 360WH NI- MH RD	MARAMA SOL 30W 720WH NI- MH	MARAMA SOL 40W 720WH NI- MH RD	MARAMA SOL 60W 720WH NI- MH
Standards	EN 60598-1, EN 60598-2-3, EN 62471, EN 55015, EN 13032-1						
Lighting category according to EN13201	ME5 / ME6 / S2 / S3 / S4 / S5 / S6						
Typical application	Residential streets, private driveways, walking paths, urban local roads, parking lots, bicycle lanes, industrial areas						
LED light housing material	Aluminum						
Enclosure Rating	IP66 (applies to the whole system)						
Lamp family code	PHILIPS Fortimo FastFlex						
Light colour K	2700, 3000, 4000, 5000 or 5700						
Colour Rendering Index	> 70 or > 80						
Optics	Ledit or compatible						
Control method	Programmable						
Dimming range	0 ... 100 %						
PV panel	140W Monocrystalline	140W Monocrystalline	280W Monocrystalline	280W Monocrystalline	280W Monocrystalline	280W Monocrystalline	280W Monocrystalline
Panel dimensions (mm)	1560x230x230	1560x230x230	3120x230x230	3120x230x230	3120x230x230	3120x230x230	3120x230x230
Charger	MPPT 10A	MPPT 10A	MPPT 10A	MPPT 10A	MPPT 10A	MPPT 10A	MPPT 10A
Battery protection	Yes						
Remote control	Yes	Yes	Yes	Yes	Yes	Yes	Yes
Battery	Ni-MH 30Ah	Ni-MH 30Ah	Ni-MH 30Ah	Ni-MH 30Ah	Ni-MH 60Ah	Ni-MH 30Ah	Ni-MH 60Ah
System autonomy (without charging)*	12 hours	12 hours	12 hours	12 hours	24 hours	12 hours	12 hours
Temperature range	-20 °C to + 50 °C						
Ready for "self-learning" system	Yes						
Pole	Included						
Pole height	4,9 meters	4,9 meters	6,5 meters	6,5 meters	6,5 meters	6,5 meters	6,5 meters
Component storage	Inside the pole						
Construction material	Galvanised steel						
Motion detector	Optional						

* with smart dimming - 5 nights.

EAN	Additional options
4772049002944	Street light pole STP6500
4772049005020	Street light pole STP4900
4772049005037	Double arm bracket
4772049005044	Four arm bracket
4772049002951	Basement for street light pole BP1-6 incl.
4772049005624	30Ah 12V battery upgrade from Ni-MH to LTO
4772049002968	Remote controller CU-ALL

ISO 9001:2015
ISO 14001:2015
ISO 45001:2018

BUREAU VERITAS
Certification



Ecolight[™]
Save simple.

ELEKTROS TAUPYMO SPRENDIMAI, UAB

Moletu str. 13, Didzioji Riese (PC "Link Moletu"), Vilnius distr. 14028, Lithuania
Liepu str. 15, Linksmakalnis, Kaunas distr. 53290, Lithuania
E: info@ecolight.lt T: +370 5 2328207 F: +370 5 2784262
W: www.ecolight.lt, www.ecolight-lights.co.uk