



2018

Intruder Alarm Systems
Product Catalogue

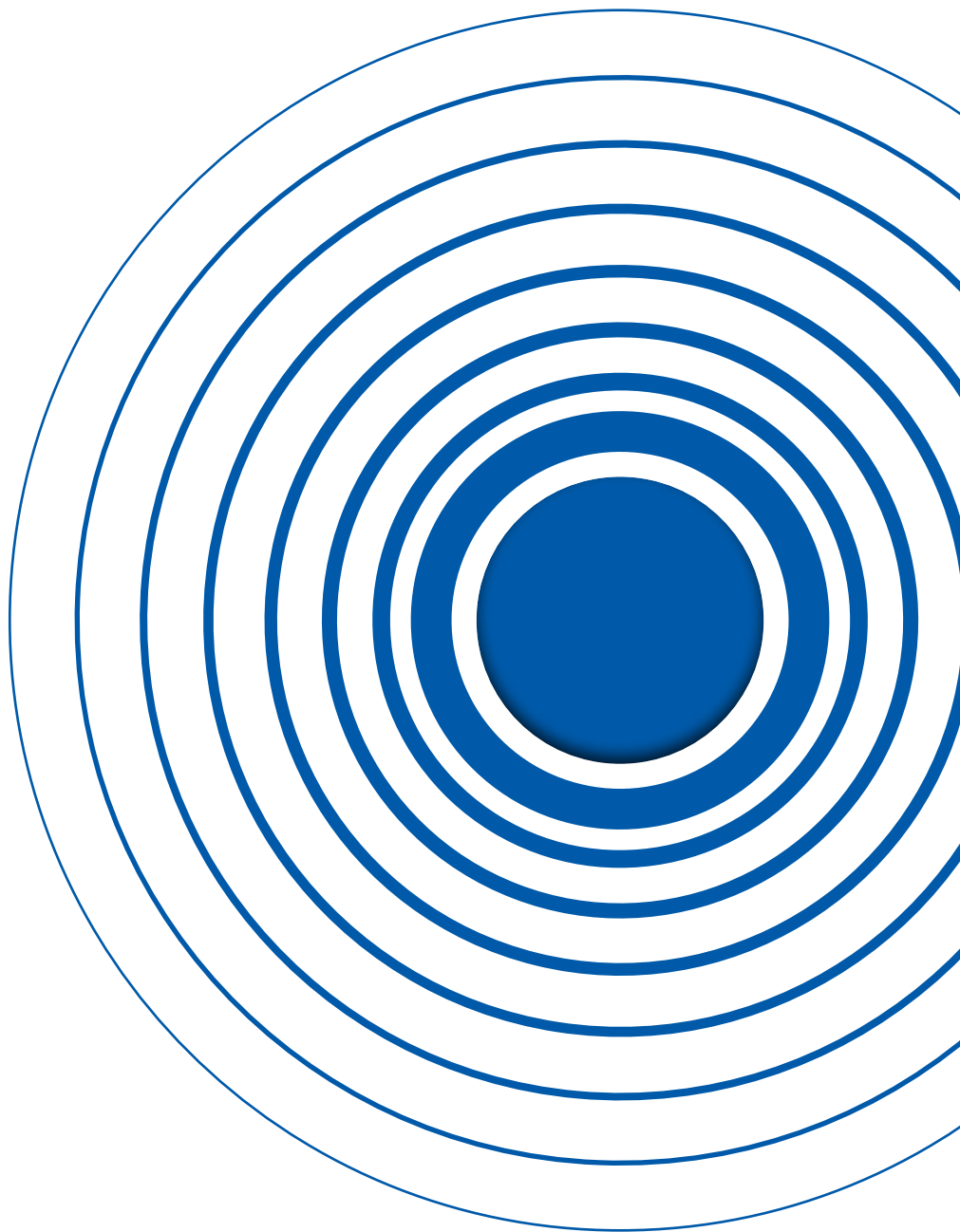


Table of contents

2018

Intruder Alarm System

4	COMPANY PROFILE
6	ECLIPSE SERIES
7	Eclipse Series Intruder Alarm Panels
8	Eclipse 8
9	Eclipse 16
10	Eclipse 32
11	Eclipse 99
12	Eclipse Controlling Devices
14	Eclipse Modules
16	COMMUNICATION
17	Communication Modules
18	Ajax Solution; MobileTTE
19	BRAVO WIRELESS SERIES
20	BRAVO Wireless Alarm Panel
21	BRAVO Wireless Devices: Detectors and Sounders
22	BRAVO Wireless Devices: Remote controls and Communication modules
23	DETECTORS
24	Titan PIR Detectors
26	Titan Dual Technology PIR Detectors
28	Other Detectors
29	Fire Alarm Detectors
30	Sirens
32	Accessories
33	SOFTWARE
34	ProSTE Programming Software
35	Guard View Monitoring Software
36	LONG RANGE RADIO
37	LRR8000 Central Station and Repeater

TELETEK ELECTRONICS JSC IS A HIGH-TECH MANUFACTURER OF A FULL RANGE OF INTRUDER AND FIRE ALARM SYSTEMS

In 2016, Teletek Electronics celebrated its 25th anniversary on the global intruder and fire alarm systems market!

Founded in 1991, the company started with professional installations of security systems. However, this was not enough for the passionate minds of the engineers' team and 2 years later the first burglar alarm panel was fact!

With only 10 employees and a small rented office in the beginning, today the company has more than 130 employees and owns full process production premises, warehouses, and administrative buildings.

The smaller range of intruder alarm devices, throughout the years grew to more than 30 million manufactured products, covering not only intruder alarms, but also the life safety fire alarm systems and communication solutions.

Today we export our products in more than 75 countries all over the world.

26 years, we continue to search, develop and realize high performance products and solutions, combining our profound technological experience, strong production capacity, and the energy and passion of our people.

As recognition for its high quality and reliable production Teletek Electronics is awarded with ISO 9001:2015 Certificate.



“This successful story and the achieved results would not have been a fact without the people of this company. Some of them are working here from the beginning, others - for only a few months, but all of us are like one big family, with the passion to grow and to be part of the global market. And every year I see that our Partners also become part of our big family and this makes me satisfied and with high expectations for the future...” said Valentin Stoitzev, one of the owners of Teletek Electronics JSC.

The heart of Teletek Electronics' success is its productive flexibility that is expressed not only in the wide production range but also in the ability to design and make specific and exclusive versions of the product in collaboration with the Customer. This important plus brings about obvious advantages, especially in the area of intruder and fire alarm systems where the elaboration process of a customized product is sometimes very hard.

Our company works with 2 hi-tech SMD lines consisting of DEK Ela screen, PHILIPS Topaz-X Pick and Place machines and ERSA Hotflow5 oven. With capability of placing over 30 000 components per hour, the pick-and-place machines enable our high skilled and motivated engineers to mount fine pitch components, BGA components and micro BGA components as well as Double-sided Reflow Soldering.

What we have achieved and we are proud to announce:

- 27 years of continuous innovation;
- More than 130 employees;
- Export in 75 countries;
- More than 30 million manufactured products;
- Almost a million buildings, secured by Teletek Electronics' systems.

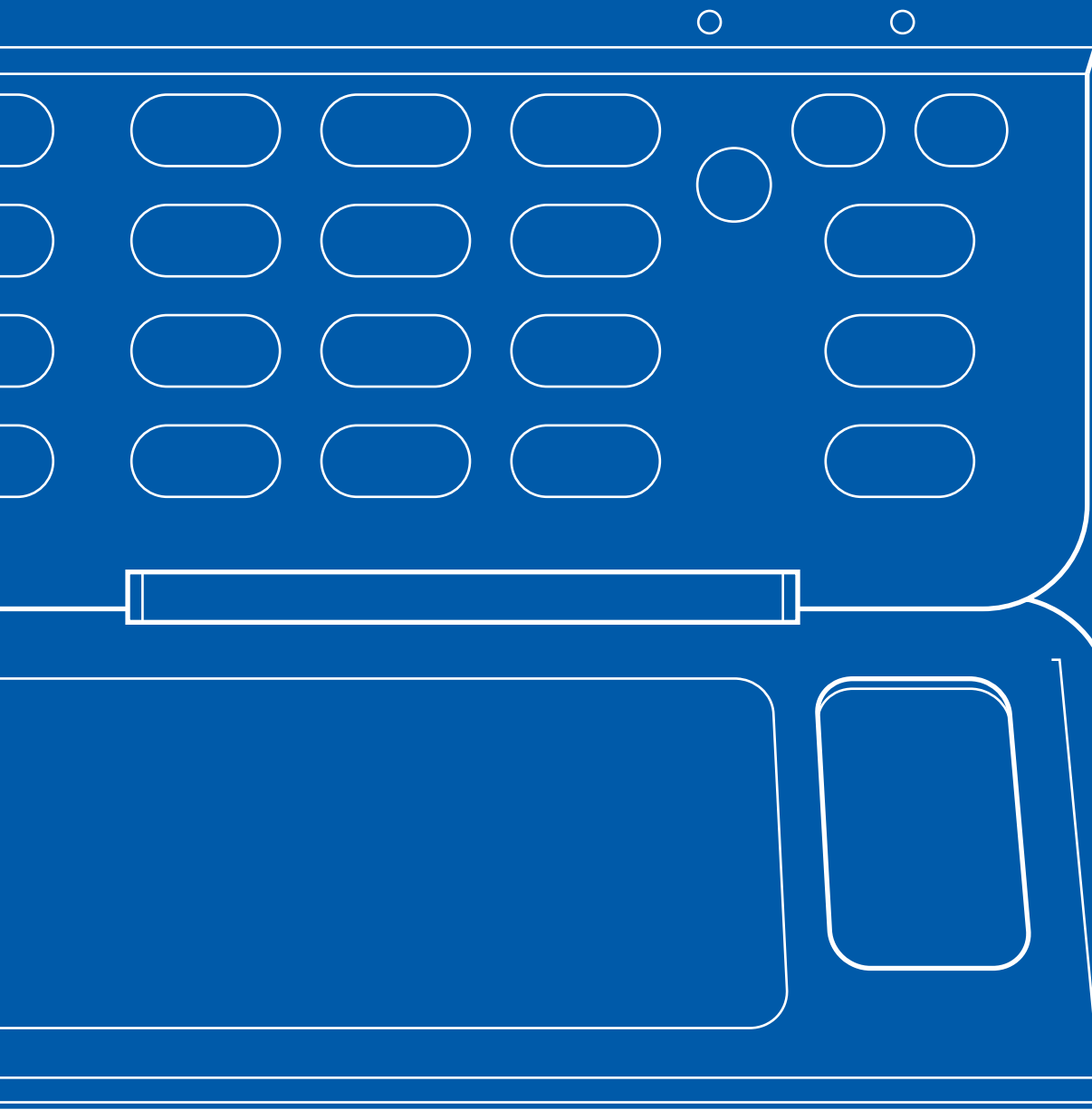
And all of these would not have been possible without YOU - our loyal Customers, Partners and Friends.

Thank you!

We look forward to work, grow, explore and enjoy the next coming years!



ECLIPSE SERIES



ECLIPSE

INTRUDER ALARM PANELS

Contemporary range of panels working with one and the same devices – expanders, keypads, software, etc.

Different types of programming: by addresses, by operations or using tree structure text menus.

Easy installation, programming and operation.

Automatic addresses for all devices in a configuration.

Innovative design.

Certification and approvals:



Eclipse 8 Eclipse 16 Eclipse 32 Eclipse 99

EN Grade certified	2, Class I	2, Class I	2, Class I	3, Class II
Zones on board	6 + 2 keypad zones	16	8 (optional - doubling)	8 (optional - doubling)
Max. Zones	8	16	32	99
Max. PGM Outputs	5	8	32	99
Areas	1	3	8	16
Zone 8 expander module	No	Yes	Yes	Yes
PGM 8 expander module	No	No	Yes	Yes
WL - Wireless expander module	No	Yes	Yes	Yes
User codes or proxy cards	8	32	64	99
Event log	256	1024	1024	5000
Power supply	1A	1A	2.5A	2.5A
Keypads	LED, LCD	LED, LCD	LED, LCD	LED, LCD
Time attendance	No	No	Yes	Yes
BUS devices	2 max	5 max	30 max	30 max

ECLIPSE 8

INTRUDER ALARM PANEL

- Simple entry level solution
- Full programming via keyboard or directly with ProsTE software

Eclipse 8 is an alarm panel with 8 zone inputs for security of small residential, commercial and office premises. The control management of the panel is available via keyboard or proximity card reader. Full programming is done via keyboard or directly with ProsTE software. Remote control and monitoring via MobileTTE (iOS/Android) application. The installer can choose between 3 alternative types of programming - by addresses, by operations or using tree structure text menus. The panel has a built-in digital communicator and is compatible with wide range of detectors, communication modules and control devices.

Eclipse 8 Alarm Control Panel is EN50131 GRADE2 Class I certified.

Zone Inputs:	6 physical inputs on the control panel for connection of detectors + 2 zone inputs in the connected keyboards/proxi readers.
Zones:	8, with freely programmable parameters.
Zone wiring:	5 types, single connection style.
Areas:	1
Outputs:	4 weak (up to 100mA) and 1 powerful (up to 1A) programmable outputs OC (open collector) type, situated on the control panel. Range of activation events for outputs management. Available programming of PGM4 for operation with TP2000 transmitter on serial connection.
Access codes:	4-digit; 8 User codes (1 Manager + 7 Users), 1 Engineer code.
Memory LOG:	256 memory events with date and hour of occurring – can be viewed via keyboard, ProsTE software or MobileTTE iOS/ Android application, or optional reported via Eclipse VD module.
Report to monitoring:	Built-in digital communicator for telephone line reporting – CID and SIA protocols supported. TTE GPRS Standard/TTE GPRS Simple communication modules.
Peripheral devices:	Up to 2 devices connected to the system bus: <ul style="list-style-type: none"> • LCD and LED Keyboards • Proximity card readers
Programming:	3 programming menu styles: <ul style="list-style-type: none"> • By addresses • By operations • Text menus (tree structure)



Technical Specifications

Mains Power Supply:	230VAC +10%/-15%
Frequency:	50-60Hz
Mains Transformer:	17VAC/17VA
Back-up Power Supply:	Accumulator 12V/7Ah
Consumption of the control panel:	100mA
Connecting Wires:	2.5mm ²
Enclosure:	ABS plastic box, white
Working Temperature Range:	from -10°C to +50°C
Storage Temperature Range:	from -20°C to +60°C
Dimensions:	290x240x80mm

Installer Advantages

- ESD protection against storm discharge
- Real time view of the resistance on each zone
- Real time view of the communication quality on the BUS
- Three types of programming menus
- Service keypad interface on board
- Full remote management (programming) of the system through Internet
- Free of charge software ProsTE and MobileTTE (iOS, Android)
- Status indicator on each device for: short circuit, low voltage and wiring error on the bus

ECLIPSE 16

INTRUDER ALARM PANEL

- Middle entry level solution
- Full programming via keyboard or directly with ProsTE software

Eclipse 16 is an alarm panel with 16 physical zone inputs and 3 independent areas (partitions) for security of middle size residential, commercial or office premises. All 16 zones can be used on board connectors or with zone expander. Full programming is done via keyboard or directly with ProsTE software. Remote control and monitoring via MobileTTE (iOS/Android) application. The installer can choose between 3 alternative types of programming - by addresses, by operations or using tree structure text menus. The panel has a built-in digital communicator and is compatible with wide range of detectors, communication modules and control devices.

Eclipse 16 Alarm Control Panel is EN50131 GRADE2 Class I certified.

Zone Inputs:	16 physical inputs on the control panel for connection of detectors.
Zones:	16, with freely programmable parameters.
Zone wiring:	5 types, single connection style.
Areas:	3
Outputs:	4 weak (up to 100mA) and 1 powerful (up to 1A) programmable outputs OC (open collector) type. 3 logical programmable outputs. Range of activation events for outputs management.
Access codes:	4-digit; 32 User codes (1 Manager + 31 Users), 1 Engineer code.
Memory LOG:	1024 memory events with date and hour of occurring – can be viewed via keyboard, ProsTE software or MobileTTE (iOS/Android) application, or optional reported via Eclipse VD module.
Report to monitoring:	Built-in digital communicator for telephone line reporting – CID and SIA protocols supported. TTE GPRS Standard/TTE GPRS Simple communication modules.
Peripheral devices:	Up to 5 devices connected to the system bus: <ul style="list-style-type: none"> • LCD and LED Keyboards • Proximity card readers • Zone and WL Expanders
Programming:	3 programming menu styles: <ul style="list-style-type: none"> • By addresses • By operations • Text menus (tree structure)



Technical Specifications

Mains Power Supply:	230VAC +10%/-15%
Frequency:	50-60Hz
Mains Transformer:	17VAC/23VA
Back-up Power Supply:	Accumulator 12V/7Ah
Consumption of the control panel:	100mA
Connecting Wires:	2.5mm ²
Enclosure:	ABS plastic box, white
Working Temperature Range:	from -10°C to +50°C
Storage Temperature Range:	from -20°C to +60°C
Dimensions:	290x240x80mm

Installer Advantages

- ESD protection against storm discharge
- Real time view of the resistance on each zone
- Real time view of the communication quality on the BUS
- Three types of programming menus
- Service keypad interface on board
- Full remote management (programming) of the system through Internet
- Free of charge software ProsTE and MobileTTE (iOS, Android)
- Status indicator on each device for: short circuit, low voltage and wiring error on the bus

ECLIPSE 32

INTRUDER ALARM PANEL

- Hybrid solution with impressive functionality
- Up to 32 zones and 8 areas

Eclipse 32 is up to 32 zone control panel appropriate for security of medium sized commercial premises and offices. The panel supports 8 areas (partitions) with individual programming. Eclipse 32 has 8 physical inputs on board for connecting of detectors. The full configuration of 32 zones can be realized with doubling zone connection and/or Zone expander modules for 8 zones. Full programming is done via keyboard or directly with ProsTE software. Remote control and monitoring via MobileTTE (iOS/Android) application. The installer can choose between 3 alternative types of programming - by addresses, by operations or using tree structure text menus. Eclipse 32 Alarm Control Panel is EN50131 GRADE2 Class I certified.

Zone Inputs:	8 physical inputs on the control panel for connecting of detectors.
Zones:	Up to 32 zones with freely programmable parameters.
Zone wiring:	9 types, single or doubling connection style.
Areas:	8
Time attendance: (via proximity card readers)	8 Time slots (tables) to manage the user access to the protected sites. Every time slot can be programmed individually according to the system requirements.
Outputs:	4 weak (up to 100mA) and 1 powerful supervised siren (up to 1A), situated on the control panel. Expanding up to 32 outputs using PGM expander module. Available programming of PGM4 for realization of two-wire connection of standard fire alarm bases.
Access codes:	4/6 digit; 64 User/Manager codes, 1 Maintenance code, 1 Engineer code.
Memory LOG:	1024 events with time and date - can be viewed by a keyboard, via ProsTE software or MobileTTE (iOS/Android) application, or optional reported via Eclipse VD module.
Report to monitoring station:	Built-in digital communicator for telephone line reporting – CID and SIA protocols supported. TTE GPRS Standard/TTE GPRS Simple communication modules.
Peripheral devices:	Up to 30 devices connected to the system bus: <ul style="list-style-type: none"> • LCD and LED Keyboards • Zone, PGM and WL Expanders • Proximity card readers
Programming:	3 programming menu styles: <ul style="list-style-type: none"> • By addresses • By operations • Text menus (tree structure)



Technical Specifications

Mains Power Supply:	230VAC +10%/-15%
Frequency:	50-60Hz
Mains Transformer:	21VAC/50VA
Accumulator battery:	12V/7Ah
Current consumption:	100mA
Power output:	13.8VDC/1A, resettable fuse
Operating temperature range:	... from 0°C to +50°C
Enclosure box:	ABS plastic, white
Dimensions:	335x290x105mm

Installer Advantages

- ESD protection against storm discharge
- Real time view of the resistance on each zone
- Real time view of the communication quality on the BUS
- Three types of programming menus
- Service keypad interface on board
- Full remote management (programming) of the system through Internet
- Free of charge software ProsTE and MobileTTE (iOS, Android)
- Status indicator on each device for: short circuit, low voltage and wiring error on the bus
- 45 degrees terminals
- Color coded terminals
- Full Eclipse peripheral devices compatibility

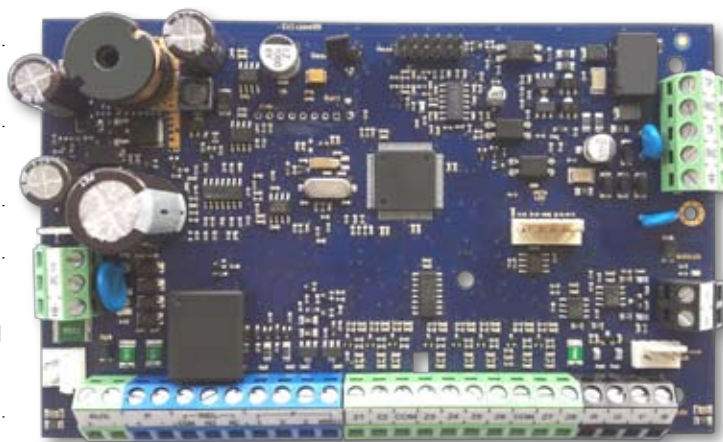
ECLIPSE 99

INTRUDER ALARM PANEL

- High-end hybrid solution with time attendance functions
- Up to 99 zones and 16 areas

Eclipse 99 is up to 99 zone control panel appropriate for security of large commercial and office premises. The panel supports 16 areas (partitions) with individual programming. The panel has time attendance functions and allows the use of wireless devices via wireless expander modules. Full programming is done via keyboard or directly with ProsTE software. Remote control and monitoring via MobileTTE (iOS/Android) application. The installer can choose between 3 alternative types of programming - by addresses, by operations or using tree structure text menus. Eclipse 99 Alarm Control Panel complies with EN50131 GRADE3 Class II.

Zone Inputs:	8 physical inputs on the control panel for connecting of detectors.
Zones:	99, with freely programmable parameters.
Zone connection styles:	9 types, single or doubling connection style.
Areas:	16 independent
Time attendance: (via proximity card readers)	8 Time slots (tables) to manage the user access to the protected sites. Every time slot can be programmed individually according to the system requirements.
Outputs:	3 weak (up to 100mA), 1 powerful supervised siren (up to 1A), 1 relay situated on the control panel. Expanding up to 99 outputs using PGM expander module. Available programming of PGM3 for realization of two-wire connection of standard fire alarm bases.
Access codes:	4/6 digit; 99 User/Manager codes, 1 Maintenance code, 1 Engineer code.
Memory LOG:	5000 events with time and date - can be viewed by a keyboard, via ProsTE software or MobileTTE (iOS/Android) application, or optional reported via Eclipse VD module.
Report to monitoring station:	Built-in digital communicator for telephone line reporting – CID and SIA protocols supported. TTE GPRS Standard/TTE GPRS Simple communication modules.
Peripheral devices:	Up to 30 devices connected to the system bus: <ul style="list-style-type: none"> • LCD and LED Keyboards • Zone, PGM and WL Expanders • Proximity card readers
Programming:	3 programming menu styles: <ul style="list-style-type: none"> • By addresses • By operations • Text menus (tree structure)



Technical Specifications

Mains Power Supply:	230VAC +10%/-15%
Frequency:	50-60Hz
Mains transformer:	21VAC/50 VA
Accumulator battery:	12V/7Ah
Current consumption of control panel:	100mA
Power output:	13.8VDC/2.5A fuse
Relay output (NC/NO):	10A@250VAC 10A@30VDC
Operating temperature range:	from 0°C to +50°C
Enclosure box:	ABS plastic, white
Dimensions:	335x290x105mm

Installer Advantages

- ESD protection against storm discharge
- Real time view of the resistance on each zone
- Real time view of the communication quality on the BUS
- Three types of programming menus
- Service keypad interface on board
- Full remote management (programming) of the system through Internet
- Free of charge software ProsTE and MobileTTE (iOS, Android)
- Status indicator on each device for: short circuit, low voltage and wiring error on the bus
- 45-degree terminals
- Color-coded terminals
- Full Eclipse peripheral devices compatibility

ECLIPSE

CONTROL DEVICES



Eclipse LCD32S PR

- LCD keypad with sensitive buttons
- Text display for 2x16 symbols organized into two rows
- Supports all 3 programming types
- Quick buttons for all arming modes
- Quick buttons for Memory, Troubles and Bypassed zones
- Adjustable intensity of backlight for the display and buttons
- 3 fast button combinations for sending of PANIC, MEDICAL and FIRE alarm messages to a central monitoring station
- Confidential mode
- Adjustable buzzer volume and text scroll up
- Bidirectional TAMPER switch
- Multi language support
- Built-in proxy card reader



Eclipse LCD32/PR

- LCD keypad with silicon buttons
- Text display for 2x16 symbols organized into two rows
- Supports all 3 programming types
- Quick buttons for all arming modes
- Quick buttons for Memory, Troubles and Bypassed zones
- 3 fast button combinations for sending of PANIC, MEDICAL and FIRE alarm messages to a central monitoring station
- Confidential mode
- Adjustable intensity of backlight for the display and buttons
- Adjustable buzzer volume and text scroll up
- Bidirectional TAMPER switch
- Multi language support
- Built-in proxy card reader as option
- Eclipse LCD32 is EN50131 GRADE3 Class II certified



Eclipse LED32/PR

- LED keypad
- Indication for 32 zones and 8 areas
- Supports 2 programming types: by addresses and by operations
- Quick buttons for all arming modes
- Quick buttons for Memory, Troubles and Bypassed zones
- Adjustable intensity of backlight for the buttons
- 3 fast button combinations for sending of PANIC, MEDICAL and FIRE alarm messages to a central monitoring station
- Adjustable buzzer volume
- Bidirectional TAMPER switch
- Built-in proxy card reader as option

ECLIPSE

CONTROL DEVICES



Eclipse LED16A

- LED keypad
- Indication for 16 zones and 3 areas
- Supports 2 programming types: by addresses and by operations
- Quick buttons for all arming modes
- Adjustable intensity of backlight for the buttons
- 3 fast button combinations for sending of PANIC, MEDICAL and FIRE alarm messages to a central monitoring station
- Adjustable buzzer volume
- Bidirectional TAMPER switch
- Eclipse LED16A is EN50131 GRADE2 Class II certified



Eclipse LED8

- LED keypad
- Indication for 8 zones and 1 area
- Supports 2 programming types: by addresses and by operations
- Quick buttons for all arming modes
- 3 fast button combinations for sending of PANIC, MEDICAL and FIRE alarm messages
- Adjustable intensity of backlight for the buttons
- Adjustable buzzer volume
- Bidirectional TAMPER switch



Eclipse PR

- Proximity card reader
- Arming/Disarming and alarm clearing in many areas by means of proximity cards
- Sensitive buttons for Full Arm and Full Disarm,
- Sensitive buttons for special arming/disarming Modes A and B, programmed from the panel
- Indication of system arming mode (Full Arm, Disarm, Mode A, Mode B)
- Indication of card status (valid and not valid card)
- Audible signalling
- One output (100mA OC or Relay)
- One zone input



Eclipse PR IT

- Proximity card reader with LED indication
- Arming/Disarming of the system only with proximity cards and tags
- Special arming/disarming Modes A and B, programmed from the panel
- Small and compact design
- Designed for built-in installation in electrical sockets via specialized DIN box (on the picture)

Note: In the kit of the supplied equipment is included only the reader's PCB. The DIN box can be purchased separately.

ECLIPSE

MODULES



Eclipse VD

- Voice Dialer
- Plug-in card to the panel's PSTN
- Up to 8 phone numbers for voice reporting
- Remote arm/disarm, output control, system status checking guided by voice
- Multilingual support
- Easy language update (languages are stored on SD card)



Eclipse Zone 8

- Zone expander
- Connection directly to the system bus
- 8 additional zone inputs with freely programmable parameters
- Additional PGM output, 100mA, OC type (open collector)
- Mounting in the panel box or in small universal plastic box SB-U
- Eclipse Zone 8 is EN50131 GRADE3 Class II certified



Eclipse PGM 8

- PGM expander
- Connection directly to the system bus
- 8 additional programmable outputs with freely programmable parameters, 100mA, OC type (open collector)
- Mounting in the panel box or in small universal plastic box SB-U



Eclipse Zone 8 PS

- Zone expander with independent power supply
- Connection directly to the system bus
- 8 additional zone inputs with freely programmable parameters
- Additional PGM output, 100mA, OC type (open collector)
- Mounting in a big universal plastic box PB-U*

*** Note:** In the kit of the supplied equipment is included only the module's PCB. The module's operation requires an external power supply 230 VAC, a transformer unit 17V/17VA and a back-up battery 12V/7Ah.



Eclipse PGM 8 PS

- PGM expander with independent power supply
- Connection directly to the system bus
- 8 additional programmable outputs with freely programmable parameters, 100mA, OC type (open collector)
- Mounting in a big universal plastic box PB-U*

*** Note:** In the kit of the supplied equipment is included only the module's PCB. The module's operation requires an external power supply 230 VAC, a transformer unit 17V/17VA and a back-up battery 12V/7Ah.



Eclipse WL Wireless Expander

- 868 MHz Band
- Two-way communication
- Frequency agility
- Up to 16/32 wireless devices BRAVO series (depends on the Control panel)
- Up to 32/64/99 remote controls (depends on the Control panel)
- Mounting in SB-U small plastic box

WIRELESS

DEVICES



BRAVO PIR

- Digital PIR detector
- 90 degrees coverage area in 54 zones
- Operating range up to 15m
- White light immunity - 5200 Lux
- Temperature compensation
- PET 12kg
- Optional bracket for easy installation
- 1x3V/1500mAh, CR123A battery type
- ~ 3 years battery life
- Certified to EN50131, GRADE 2, Class II



BRAVO FD

- Combined optical-smoke and heat detector
- Class A1/R according EN54-5
- Rate-of-rise heat part
- Optical chamber auto compensation
- 2x3V/1500mAh, CR123A battery type
- ~ 3 years battery life



BRAVO MC

- Magnetic contact detector
- Hardwired zone for connecting a rolling shutter or other wired detector
- 1x3V/1500mAh, CR123A battery type
- ~ 3 years battery life
- Certified to EN50131, GRADE 2, Class II



BRAVO FL

- Flood detector
- 1x3V/1500mAh, CR123A battery type
- ~ 3 years battery life



BRAVO RC

- 4 button key fob remote control
- Two-way communication
- LED indication for the system status
- Functions: Arm, Disarm, System information
- Additional button with programmable function
- 1x3V/600mAh, CR2450 battery type
- ~ 3 years battery life
- Certified to EN50131, GRADE 2, Class II



BRAVO PIR EXT GJD

- Digital PIR detector
- Coverage angle 10°-70°
- Adjustment: 180° pan, 90° tilt
- 28 zones for each detection element
- White light immunity - 50 kLux
- Operating temperature -20°C to +55°C
- 3x3V, CR123A battery type
- ~ 3 years battery life
- Outdoor installation, IP65



BRAVO SR300

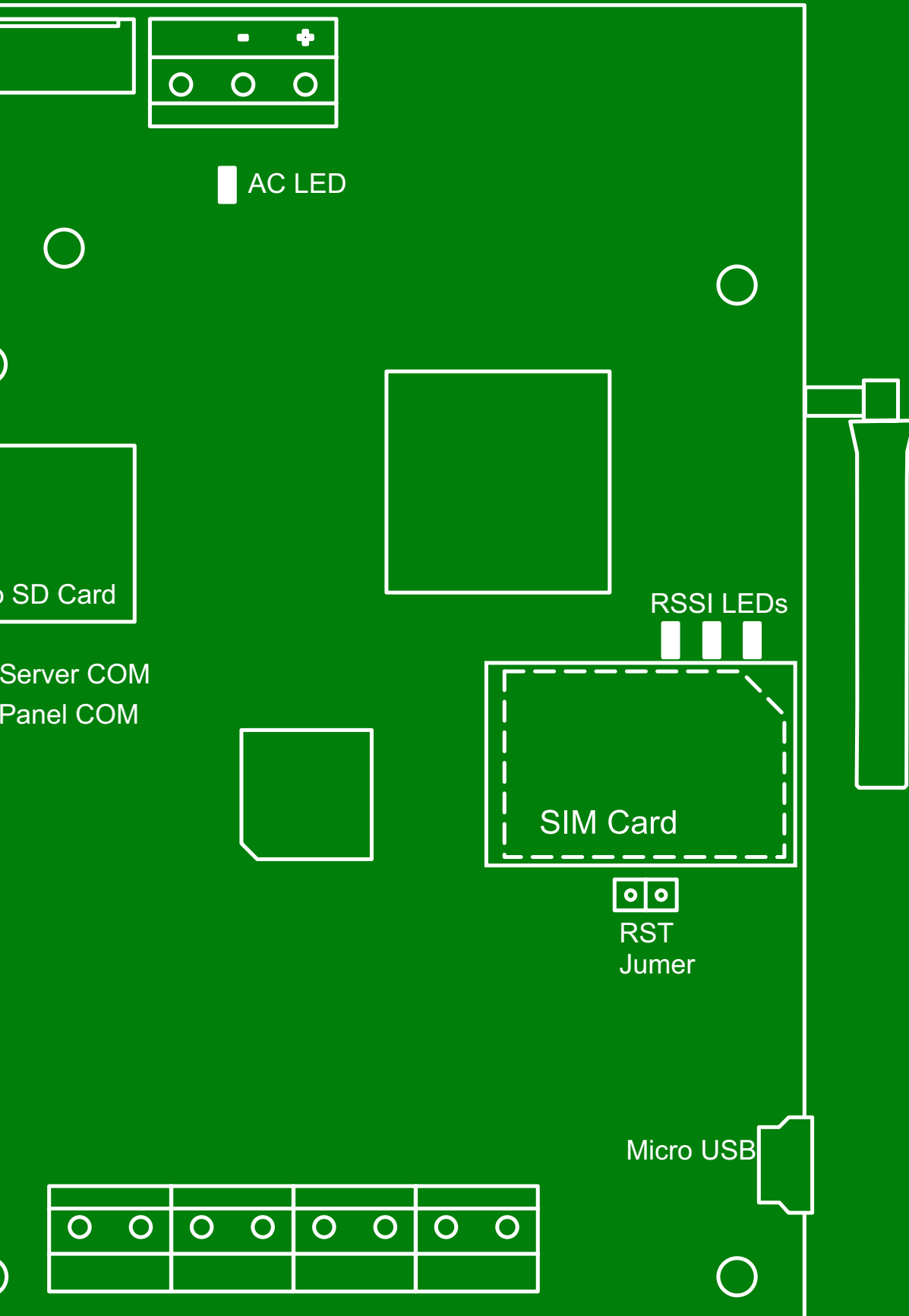
- Piezo outdoor siren
- Acoustic pressure: 110dB/1m
- Bidirectional tamper
- Internal metal cover
- LED flash
- Battery type:
 - Lithium, 2x3V size "D" or 4x3V size "A"
 - Alkaline, 4x1.5V
- ~ 3 years battery life
- Operating temperature:
 - Lithium, -30°C to +65°C
 - Alkaline, -10°C to +40°C
- Optional power supply with adapter 12VDC/1A
- Certified to EN50131, GRADE 2, Class II/ Class IV



BRAVO CURTAIN

- Curtain detector (combined PIR+MW)
- Two-way communication
- Detection range: up to 12m (adjustable)
- Coverage angle:
 - PIR part: 90° vertical, 7.5° horizontal
 - MW part: 80° vertical, 32° horizontal
- LED indication for Low battery and Test mode
- Operating temperature: -20°C to +60°C
- 1x3V, CR123A battery type
- ~ 3 years battery life

COMMUNICATION



COMMUNICATION SOLUTIONS



TTE LAN

- Indication for the network status and trouble with the connection to the control panel
- Internet remote programming and control through AJAX SP PRO/MobileTTE (iOS/Android) application
- Micro USB port for configuration with ProsTE software
- Serial communication with ECLIPSE series control panels
- 6 programmable inputs/outputs, OC type (up to 100mA each)
- Main and Backup IP for connection with AJAX SP PRO
- Automatic (DHCP) or manual settings for network connection
- Reset jumper
- Suitable for home automation
- Control panel communication supervision
- Network status indicator



TTE Combo

- Compatible with control panels capable of sending Contact ID (CID)
- Control panel communication supervision
- AES 128 encryption
- Communication channels – LAN and/or GPRS
- Main and Back-up reporting channels
- Connecting to AJAX SP PRO through IP or DNS address
- LAN settings – Manual or Automatic (DHCP)
- 1 input, 2 outputs



TTE GPRS Standard

- Serial communication with Eclipse control panels
- Third party alarm panels connected to the inputs
- 6 programmable inputs/outputs, OC type (up to 100mA each)
- 6 telephone numbers
- SMS for system events and input activation
- Voice Reporting and Voice Guiding (arming, disarming, output control)
- Connection with AJAX SP servers via IP or DNS address
- Main and back-up servers
- SIA over IP reporting to AJAX SP
- AES 128 encryption
- Remote access through AJAX WEB and MobileTTE (iOS/Android) application
- Micro USB port for programming



TTE GPRS Simple

- Serial communication with Eclipse control panels
- 6 telephone numbers
- SMS for system events
- Voice Reporting and Voice Guiding (arming, disarming)
- Connection with up to two AJAX SP servers via IP or DNS address
- SIA over IP reporting to AJAX SP
- AES 128 encryption
- Remote access through AJAX WEB and MobileTTE (iOS/Android) application
- USB port for programming



ARGUS GSM

- Sending of voice or SMS messages to a central monitoring station or directly to the User
- System controlling via SMS message
- Home automation
- Function for checking the signal strength
- 6 programmable inputs/outputs (up to 100mA each)
- 2 outputs (up to 500mA each)
- 8 SMS messages
- 8 voice messages
- 8 telephone numbers
- Direct PC programming via ProsTE software
- Antenna with 3m flexible cable included
- Optional back-up power supply with 4 NiMH batteries, size AA

AJAX SP

SOFTWARE SECURITY SOLUTION

AJAX SP (TTE Cloud service) is a comprehensive network solution for maximum reliability of every security system. Appropriate for use by monitoring centres and end users alike.

AJAX SP - CD Software Pack; Based on OS Windows Server; Administrator and WEB User application.

- Online web based application
- Receives signals from GPRS/ LAN Teletek Electronics communication modules installed at monitored sites
- Online monitoring and status information of alarm systems connected to the AJAX SP
- Transfers messages via LAN or RS232 to monitoring software with SURGARD MLR2 protocol
- Full remote programming of Teletek Electronics control panels and modules
- Remote Arm/Disarm/Bypass/Output control/LOG file view
- Push notification messages for events to user
- 1 main IP address and 1 backup IP address
- Up to 10 000 modules
- High speed data transmission, protected via 128bit AES encryption algorithm
- Based on OS Windows Server 2012

Recommended PC configuration for installation of AJAX SP:

- Pentium CPU 2.0
- 500 GB disk place
- 2GB RAM
- 128 MB Video Card
- CD-ROM
- Ethernet interface
- COM port



AJAX SP Station

- AJAX SP in hardware version
- All features and characteristics of AJAX SP apply
- 1 main IP address and 1 back-up IP address
- No additional hardware needed
- No installation needed
- Two Ethernet cards
- 2 COM ports

MobileTTE

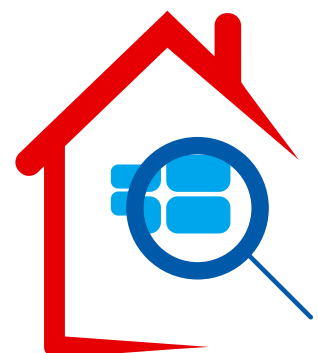
SMART PHONE APPLICATION

iOS/Android application for control and monitoring of control panels ECLIPSE and BRAVO. GPRS Teletek Electronics communication modules and AJAX SP are a must for MobileTTE. The application is suitable for everyday operation by users. Availability for 24-hour monitoring and intuitive user interface via **AJAX SP** web application.

Features and Advantages

- Remote System Arming (Full and Stay)
- Remote System Disarming
- View the Area and Zone Status
- Bypassing Zones
- Remote PGM Control
- View system log
- Selectable Push Notification messages for events
- Multi language support
- Date and time setting
- User password change
- View of several BRAVO systems connected to different AJAX SP cloud services

Compatible with:



BRAVO SERIES



5

6

7

8

9

10

11

12

13

14

15

16



BRAVO

WIRELESS ALARM PANEL

- Wireless alarm panel for home and residential security
- Full programming via panel's buttons or directly with ProsTE software

BRAVO is a wireless intruder alarm control panel suitable for installation in residential houses and small offices. The system is comfort to control via key fobs or MobileTTE (iOS/Android) application. The installation is quick and very easy with a few simple settings at the beginning. The wireless configuration can be changed at any time with minimum efforts from the user. Direct programming with ProsTE software.

As option GPRS, PSTN , PSTN VD or MOUT communication modules can be added to the system configuration for programming via AJAX WEB application.

The BRAVO panels are certified according to the requirements of R&TTE directive and EN 60950-1; certified to EN50131 GRADE2 Class II.

Functional Features

Operation frequency:	868MHz-869MHz (Adaptive frequency agility algorithm)
Type of indication:	LED
Areas:	1
Max. zones/ detectors:	16 (including PIR, MC, FL, FD)
Max. key fob remote controls:	8
Max. outdoor sounders:	1; 115dB
Built-in sounder:	85dB
Signal coding:	YES
Memory LOG:	300 events
Programming:	ProsTE software
Communication (optional):	GPRS, LAN, PSTN, PSTN VD, MOUT
Color:	Pearl (Optional: white, black, blue, green, bordeaux, grey, brown and violet)



Technical Specifications

Mains Power Supply:	
• BRAVO EXT	Adapter AC-DC, 5VDC/1A
• BRAVO INTR	100-240VAC; 50-60Hz
Back-up battery	Li-Po type; 1x3.7 V/4100mAh
Max. back-up battery size	80x65x10mm
Battery life	~ 3 years
Operating temperature range (indoor)	from -10°C to +40°C, Class II
Relative humidity	93%@+30°C
Enclosure box	ABS plastic
Dimensions	220 x 160 x 38 mm



BRAVO Panel Models

- BRAVO EXT** - Wireless alarm panel with **external power supply** - AC-DC power adapter included in the purchased equipment.
- BRAVO INTR** - Wireless alarm panel with **internal power supply** - built-in impulse power supply unit.

WIRELESS

DEVICES



BRAVO PIR

- Digital PIR detector
- 90 degrees coverage area in 54 zones
- Operating range up to 15m
- White light immunity - 5200 Lux
- Temperature compensation
- PET 12kg
- Optional bracket for easy installation
- 1x3V/1500mAh, CR123A battery type
- ~ 3 years battery life
- Certified to EN50131, GRADE 2, Class II



BRAVO FD

- Combined optical-smoke and heat detector
- Class A1/R according EN54-5
- Rate-of-rise heat part
- Optical chamber auto compensation
- 2x3V/1500mAh, CR123A battery type
- ~ 3 years battery life



BRAVO MC

- Magnetic contact detector
- Hardwired zone for connecting a rolling shutter or other wired detector
- 1x3V/1500mAh, CR123A battery type
- ~ 3 years battery life
- Certified to EN50131, GRADE 2, Class II



BRAVO FL

- Flood detector
- 1x3V/1500mAh, CR123A battery type
- ~ 3 years battery life



BRAVO PIR EXT GJD

- Digital PIR detector
- Coverage angle 10°-70°
- Adjustment: 180° pan, 90° tilt
- 28 zones for each detection element
- White light immunity - 50 kLux
- Operating temperature -20°C to +55°C
- 3x3V, CR123A battery type
- ~ 3 years battery life
- Outdoor installation, IP65



BRAVO CURTAIN

- Curtain detector (combined PIR+MW)
- Two-way communication
- Detection range: up to 12m (adjustable)
- Coverage angle:
 - PIR part: 90° vertical, 7.5° horizontal
 - MW part: 80° vertical, 32° horizontal
- LED indication for Low battery and Test mode
- Operating temperature: -20°C to +60°C
- 1x3V, CR123A battery type
- ~3 years battery life



BRAVO SR300 Li

- Piezo outdoor siren
- Acoustic pressure: 110dB/1m
- Bidirectional tamper
- Internal metal cover
- LED flash
- Lithium battery type, 2x3V size "D" or 4x3V size "A"
- ~ 3 years battery life
- Operating temperature -30°C to +65°C
- Optional power supply with adapter 12VDC/1A
- Certified to EN50131, GRADE 2, Class IV



BRAVO SR300 ALK

- Piezo outdoor siren
- Acoustic pressure: 110dB/1m
- Bidirectional tamper
- Internal metal cover
- LED flash
- Alkaline battery type, 4x1.5V
- ~ 3 years battery life
- Operating temperature -10°C to +40°C
- Optional power supply with adapter 12VDC/1A
- Certified to EN50131, GRADE 2, Class II

WIRELESS

DEVICES

BRAVO Remote Controls



BRAVO RC

- 4-button key fob remote control
- Two-way communication
- LED indication for the system status
- Functions: Arm, Disarm, System information
- One button with programmable functionality
- 1x3V/600mAh, CR2450 battery type
- ~ 3 years battery life
- Certified to EN50131, GRADE 2, Class II



BRAVO RC-41

- 4-button key fob remote control
- One-way communication
- Operation with several BRAVO panels at the same time
- LED indication for enrollment mode
- Functions: Arm, Disarm
- Two buttons with programmable functionality
- 1x3V/190mAh, CR2032 battery type
- ~ 3 years battery life



BRAVO RC-21

- 2-button key fob remote control
- One-way communication
- Operation with several BRAVO panels at the same time
- LED indication for enrollment mode
- Functions: Arm, Disarm
- 1x3V/190mAh, CR2032 battery type
- ~ 3 years battery life



BRAVO RC-11

- 1-button key fob remote control
- One-way communication
- Operation with several BRAVO panels at the same time
- LED indication for enrollment mode
- Functions: Panic alarm
- 1x3V/190mAh, CR2032 battery type
- ~ 3 years battery life

BRAVO Communication Modules



BRAVO TTE GPRS

- GPRS Communication module
- 4 telephone numbers for sending SMS messages for events
- Built-in mounting in BRAVO panel
- Voice Reporting and Voice Guiding (arming, disarming, output control)
- Push Notification messages for events to user via AJAX SP
- Remote control and management via MobileTTE (iOS/Android) application
- Certified to EN50131, GRADE2, Class II, SP2 (SMS), SP5 (GPRS)



BRAVO PSTN VD

- PSTN Communication module with voice reporting
- Built-in mounting in BRAVO panel
- 2 GB micro SD card
- 4 Phone numbers for sending messages for events to monitoring station (via CID or SIA protocol) or to User (via User protocol)
- Certified to EN50131, GRADE2, Class II, SP1 (Voice protocol), SP2 (Digital protocol)



BRAVO LAN

- LAN Communication module
- Built-in mounting in BRAVO panel
- Remote control and management via MobileTTE (iOS/Android) application
- Remote programming of BRAVO wireless panel via AJAX WEB user interface
- Push Notification messages for events to user via AJAX SP
- LAN settings – Manual or Automatic (DHCP)



BRAVO PSTN

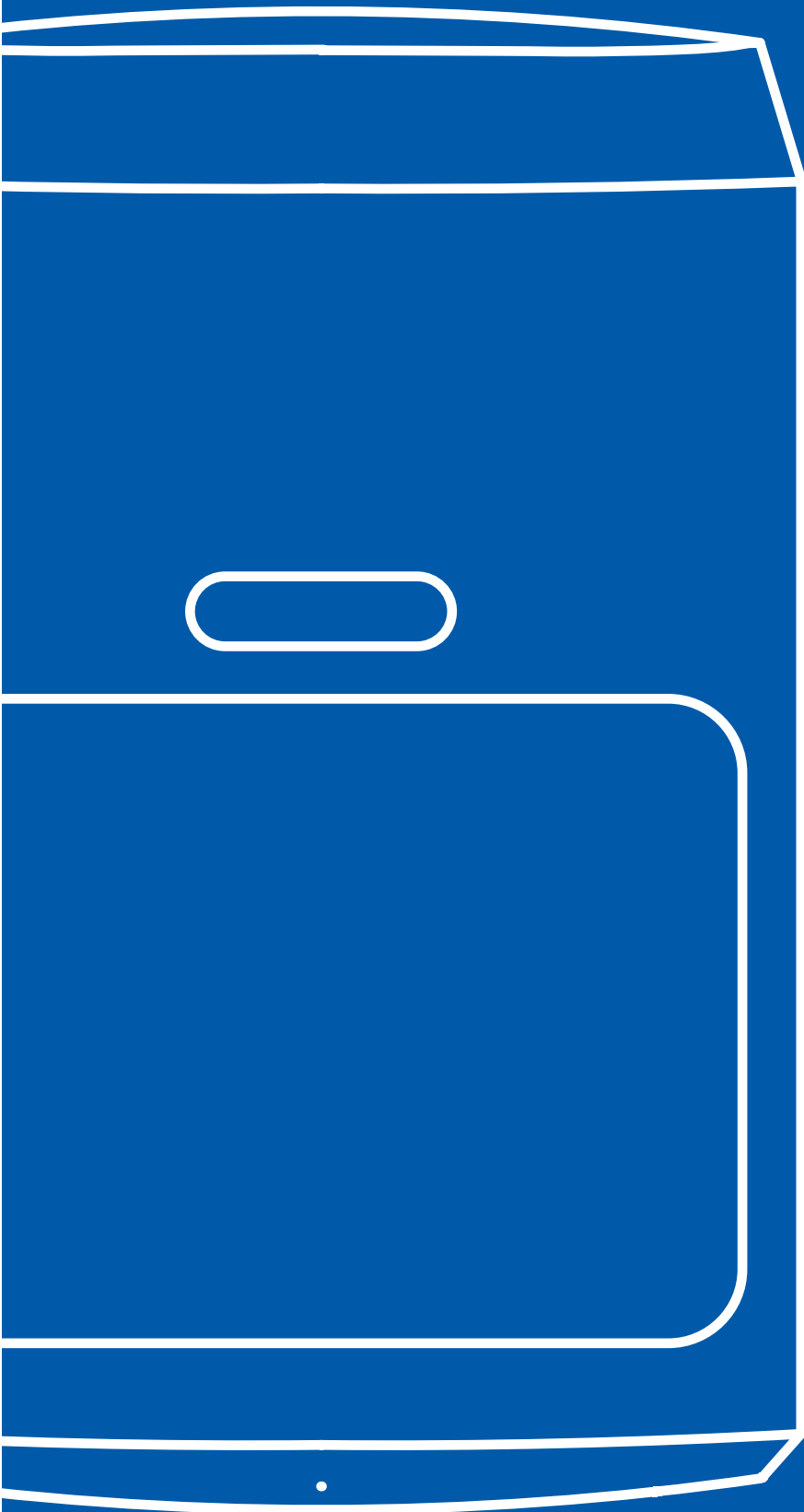
- PSTN Communication module
- Built-in mounting in BRAVO panel
- 4 Phone numbers for sending messages for events to monitoring station (via CID or SIA communication protocol) or directly to User (via User communication protocol)



BRAVO MOUT

- Communication module with outputs
- Two operation modes according the application:
 - "MOUT" - For connection of external communication devices and connection of a wired siren
 - "PGM" - PGM outputs Management via MobileTTE application
- Built-in mounting in BRAVO panel

DETECTORS



TITAN

PIR DETECTORS

TITAN Series is a range of high quality PIR detectors suitable for medium to high risk commercial and residential applications where security cannot be compromised.

The TITAN PIR detector range has minimum 12kg PET Immunity option for each type. TITAN series detectors are equipped with very precise cylindrical lens which guarantees stable and reliable detection.

The detectors come with 5-year warranty. A bracket is available as option.



Titan AG

Titan DL

Titan QD 40

EN Grade certified	2, Class II	2, Class II	-
Algorithm	Analogue	Digital	Digital
Filtering	Analogue	Digital + Analogue	Digital + Analogue
Range, m	1.5-15	1.5-15	1.5-15
Temperature compensation	Yes	Digital bidirectional	Digital bidirectional
RF Immunity	10 V/m; 80 - 2000 MHz	10 V/m; 80 - 2000 MHz	10 V/m; 80 - 2000 MHz
PET Immunity	Up to 12kg	12/20kg (selectable)	25/40kg (selectable)
Detection speed	0.2-3.5 m/s	0.2-3.5 m/s	0.2-3.5 m/s
Operating temperature	-20°C ÷ +50 °C	-20°C ÷ +50 °C	-20°C ÷ +50 °C
White light immunity, lux	6500	4000	6500
Sensitivity adjustment	1 pulse and auto	1 pulse and auto	1 pulse and 2 pulses (PET)
Viewing angle	90°	90°	90°
Indication On/Off	LED	LED	LED
OptoMOS output	Yes	Yes	Yes
Operating voltage	9 - 18V DC	9 - 18V DC	9 - 18V DC
Consumption	<12mA	<14mA	<14mA

TITAN

PIR DETECTORS



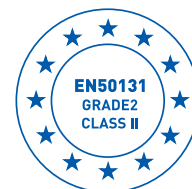
Titan AG

- PIR detector with cylindrical lens
- 90° coverage area in 54 zones
- Operating range up to 15m
- Temperature compensation
- High white light immunity up to 6500Lux
- PET immunity: small animals up to 12kg
- Reverse polarity protection
- TITAN AG is EN50131 GRADE2 Class II certified



Titan DL

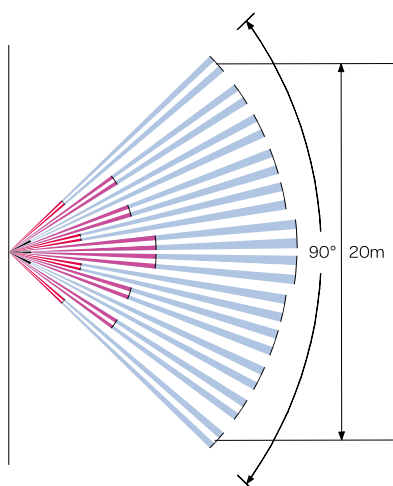
- PIR detector with cylindrical lens
- Digital processing algorithm
- Suitable for application in high class buildings -bank offices, storehouses, etc
- Digital bidirectional temperature compensation
- 90° coverage area in 54 zones
- Operating range up to 15m
- White light immunity up to 4000Lux
- PET immunity: small animals 12/20kg (selectable)
- Reverse polarity protection
- Option - 7 sensitivity levels (selectable)
- TITAN DL is EN50131 GRADE2 Class II certified



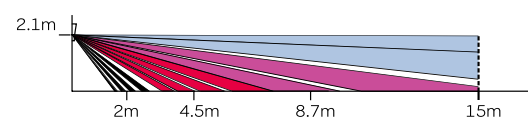
Titan QD 40

- PIR detector with cylindrical lens
- PET immunity up to 25/40kg (selectable)
- Operating range up to 15m
- 90° coverage area in 54 zones
- Digital bidirectional temperature compensation
- Excellent white light immunity up to 6500Lux
- Reverse polarity protection

Lens Pattern - top view



Lens Pattern - side view



Pet immunity



TITAN AG (PET - 12kg)
TITAN DL (PET - 12/20kg)



TITAN QD 40 (PET - 25/40kg)

TITAN

DUAL TECHNOLOGY

Dual technology detectors assure extremely high level of protection with supreme quality.

For excellent performance in detection we combine Microwave and Glass Break with PIR technology providing flexibility for professionals.

Anti Masking and Anti Spray options are provided for TITAN MW AM.

A bracket is available as option.



Titan MW

Titan MW AM

Titan GB

EN Grade certified	2, Class II	3, Class II	-
Algorithm	Digital	Digital	Analogue
Anti Masking	-	Yes	-
Range, m	PIR: 1.5-15 MW: 5-15	PIR: 1.5-15 MW: 5-15	PIR:1.5-15 GB: up to 15
PIR Sensitivity	Maximum or Auto	Maximum or Auto	1 Pulse or Auto
PIR Detection Speed	0.2 m/s - 3.5m/s	0.2 m/s - 3.5m/s	0.3 m/s - 3.0m/s
MW Sensitivity	With Trimmer, Frame Recognition	With Trimmer, Frame Recognition	-
MW Frequency	10.525 GHz (X-Band)	10.525 GHz (X-Band)	-
GB Frequency	-	-	5 - 10 kHz
Functions	-	-	Frequency and Amplification
Outputs	OptoMOS Relay	OptoMOS Relay	OptoMOS Relays - Separately
White Light Immunity, lux	4000	4000	6500
Operating Temperature	-20°C ÷ +50°C	-20°C ÷ +50°C	-20°C ÷ +50°C
LED for Status Indication	3 LEDs-PIR, MW, ALARM	3 LEDs-PIR, MW, ALARM	Yes
Consumption Standby/Alarm, max	23/46mA@12V DC	23/46mA@12V DC	17/32mA@12V DC
Operating Voltage	9 -18V DC	9 -18V DC	9 -18V DC

TITAN

DUAL TECHNOLOGY



Titan MW

- Dual Technology (PIR+MW) detector
- Digital Analysis
- Cylindrical lens
- Function "Triple Knock" - maximum protection against false alarms
- White light immunity up to 4000Lux
- PET Immunity up to 12kg (for the PIR part only)
- Sensitive adjustment - MW and PIR
- Reverse polarity protection
- TITAN MW is EN50131 GRADE2 Class II certified



Titan MW AM

- Dual Technology (PIR+MW) detector
- Digital Analysis
- Cylindrical lens
- Function "Triple Knock" - maximum protection against false alarms
- AntiMasking and AntiSpray functions
- Self-test function - a continuous assessment for operation of MW or PIR sensors. If any of the sensors is defective, the FAULT relay is activated.
- White light immunity up to 4000Lux
- Sensitive adjustment - MW, AM and PIR
- Reverse polarity protection
- TITAN MW AM is EN50131 GRADE3 Class II certified



Titan GB

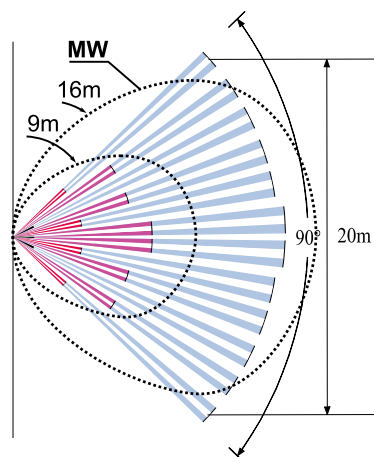
- Dual Technology (PIR + GBD glass break) detector
- Pulse count adjustment PIR and GBD
- Frequency adjustment - GBD
- Excellent white light immunity up to 6500Lux
- PET Immunity up to 12kg (for the PIR part only)
- Auto temperature compensation
- Reverse polarity protection

Bracket

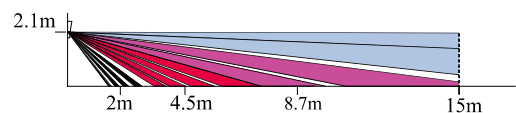
- Bracket for TITAN Series detectors
- Suitable for wall and ceiling mounting



Lens Pattern - top view



Lens Pattern - side view



Pet immunity



TITAN MW (PET - 12kg)
TITAN GB (PET - 12)

OTHER DETECTORS



GBD 10

- Glass break detector
- Analogue analysis
- Adjustable sensitivity
- Adjustable frequency range
- Sensitive to sounds between 2 and 10kHz



GBD 20

- Glass break detector
- Digital frequency analysis
- Detection of 4 different types of glass
- Pattern recognition technology
- Automatic sensitivity adjustment
- False alarm immunity
- Operating range from 1 to 7 meters
- Coverage area - 180°



GB Tester

- Assists the selection of appropriate place for glass break detector installation
- Two starting modes - automatic and manual
- Four types of glass break tests



AUMS-12S

- Magnetic contacts
- For door or window use
- Surface mounting with screws or twin adhesive tape
- N/O for closed loop systems
- Contact distance up to 20 - 25mm
- Lead wires length - 400mm

FIRE ALARM DETECTORS

INTRUDER ALARM SYSTEMS



SensoMAG F10 INTR

- Fixed temperature fire alarm detector with relay base
- Digital process algorithm
- Detects temperature over 60°C
- LED indication with 360° visibility
- Low profile design
- Low current consumption



SensoMAG R20 INTR

- Rate-of-rise temperature fire alarm detector with relay base
- Digital process algorithm
- Detects temperature over 58°C or change in temperature for a period of time
- LED indication with 360° visibility
- Low profile design
- Low current consumption



SensoMAG S30 INTR

- Optical-smoke fire alarm detector with relay base
- Digital process algorithm
- Automatic drift compensation
- LED indication with 360° visibility
- Gasket ring for additional protection to the smoke chamber against dust and dirt
- Low profile design
- Low current consumption



SensoMAG M40 INTR

- Combined optical-smoke and rate-of-rise fire alarm detector with relay base
- Digital process algorithm
- Automatic drift compensation
- LED indication with 360° visibility
- Gasket ring for additional protection to the smoke chamber against dust and dirt
- Low profile design
- Low current consumption



Deep Base

- Compatible with SensoMAG series bases
- For mounting on rough surfaces, outdoor pipelines, floating ceilings, etc

SIRENS

INTRUDER ALARM SYSTEMS



SR 105

- Indoor siren
- Sound output - 105dB/1m
- Piezo speaker
- Blue flash
- Plastic enclosure



SR 110

- Indoor siren
- Sound output - 105dB/1m
- Piezo speaker
- Plastic enclosure
- Tamper



SR 200

- Outdoor siren
- Selectable sound output - 95dB/1m; 117dB/1m
- Electromagnetic speaker
- Plastic housing with inner metal cover
- IP54 and IK08 protection
- Built-in tamper and spirit level
- LED flash

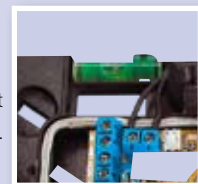


Metal housing.
Easy cover
assembling
with only one
screw.

IP54 sealed
electronics,
including
terminal block.



Level bubble for right
mounting.



Double tamper (screw and wall).

SIRENS

INTRUDER ALARM SYSTEMS



SR 300B

- Outdoor siren
- Selectable sound output - 85dB/1m; 105dB/1m
- Piezo speaker
- Plastic housing with inner metal cover
- Built-in tamper and spirit level
- Built-in NiMH battery
- Flat cover for company sticker or logo
- Blue flash
- SR 300B is EN50131 GRADE2 Class IV certified



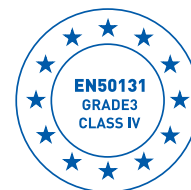
SR 3000

- Outdoor siren
- Selectable sound output - 85dB/1m; 105dB/1m
- Piezo speaker
- Plastic housing with inner metal cover
- Built-in tamper and spirit level
- Connectors for accumulator 1x12V/2.1Ah
- Flat cover for company sticker or logo
- Orange flash



SR 400

- Outdoor siren
- Selectable sound output - 85dB/1m; 105dB/1m
- Piezo speaker
- IK08 protection
- Built-in tamper and spirit level
- Built-in NiMH battery, 9V/1100mAh
- Flat cover for company sticker or logo
- Blue flash
- In conformity with EN50131 GRADE3 Class IV



Double tamper
(screw and wall).



Level bubble for
right mounting.

ACCESSORIES

INTRUDER ALARM SYSTEMS



MDU Kit

- Universal remote control module
- Operating frequency 433MHz
- Transmitting distance 50-100m
- Two independent channels
- Selectable latch or pulse operation mode for each channel
- 2 built-in power relays
- Two remote control units in the set
- Up to 100 remote key fobs



MDU-V

- Remote control module with transmitter
- Rolling code
- One channel
- Up to 15 transmitters
- Option to prohibit lost transmitter
- LED indication for relay output
- 4 programmable operation modes



SR200R Li + CM120R

- Wireless outdoor siren with universal bidirectional transceiver
- Compatible with any standard wired control panel
- 116dB/1m
- IP54
- Inner metal housing and tamper button
- Lithium Battery included (optional)



PS12XX

- Power supply units
- PS1210 - 12VDC, 1A
- PS1230 - 12VDC, 3A
- Plastic box
- Transformer



PB-U

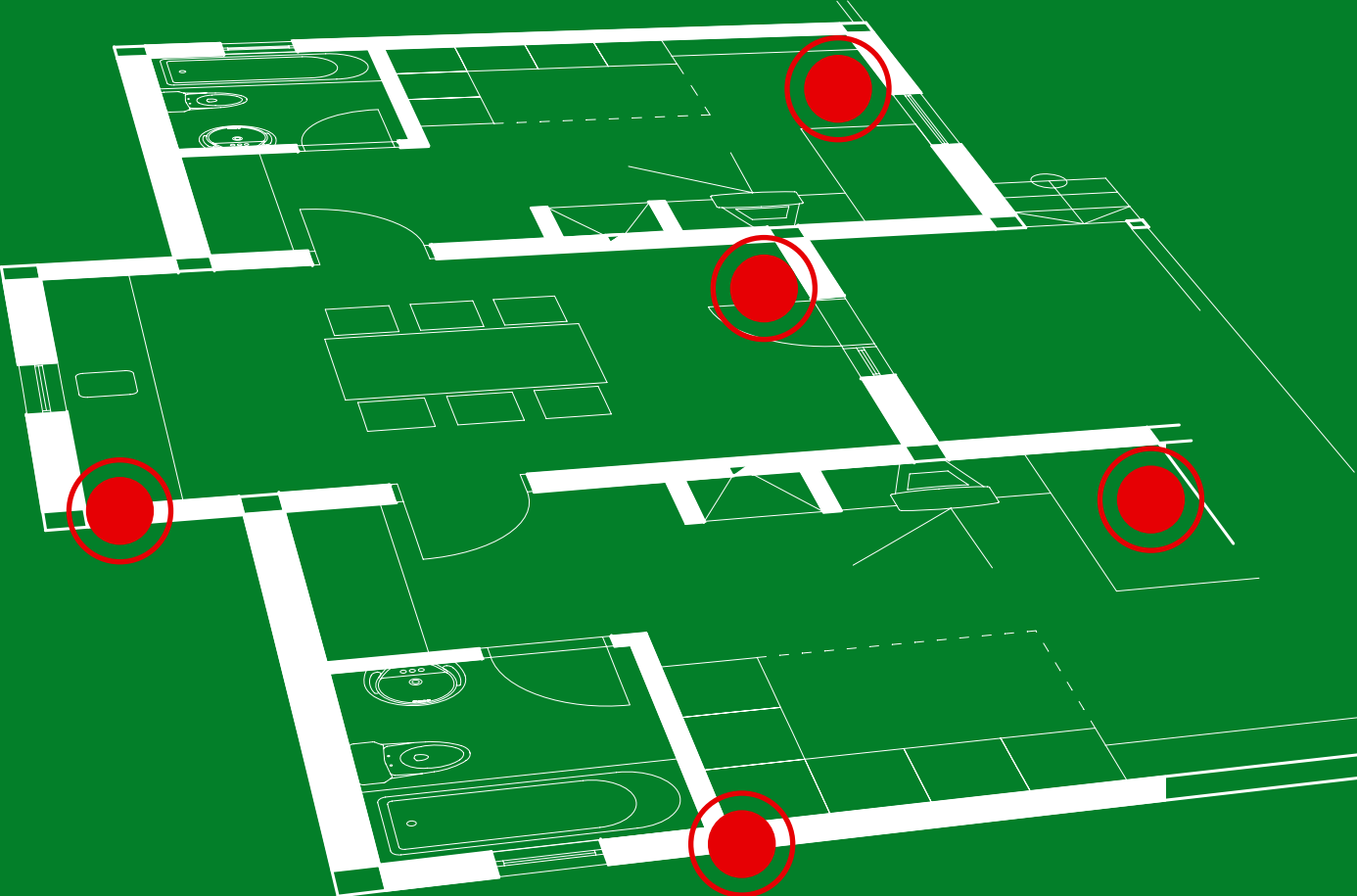
- Universal plastic box
- Suitable for ECLIPSE ZONE 8 PS, ECLIPSE PGM 8 PS
- Built-in bidirectional tamper switch
- ABS plastic



SB-U

- Suitable for TTE GPRS Standard, TTE GPRS Simple, TTE LAN, TTE Combo, ARGUS, ECLIPSE ZONE8, ECLIPSE PGM8, ECLIPSE WL
- Built-in bidirectional tamper switch
- ABS plastic
- Optional transparent cover

SOFTWARE



ProsTE

PROGRAMMING SOFTWARE

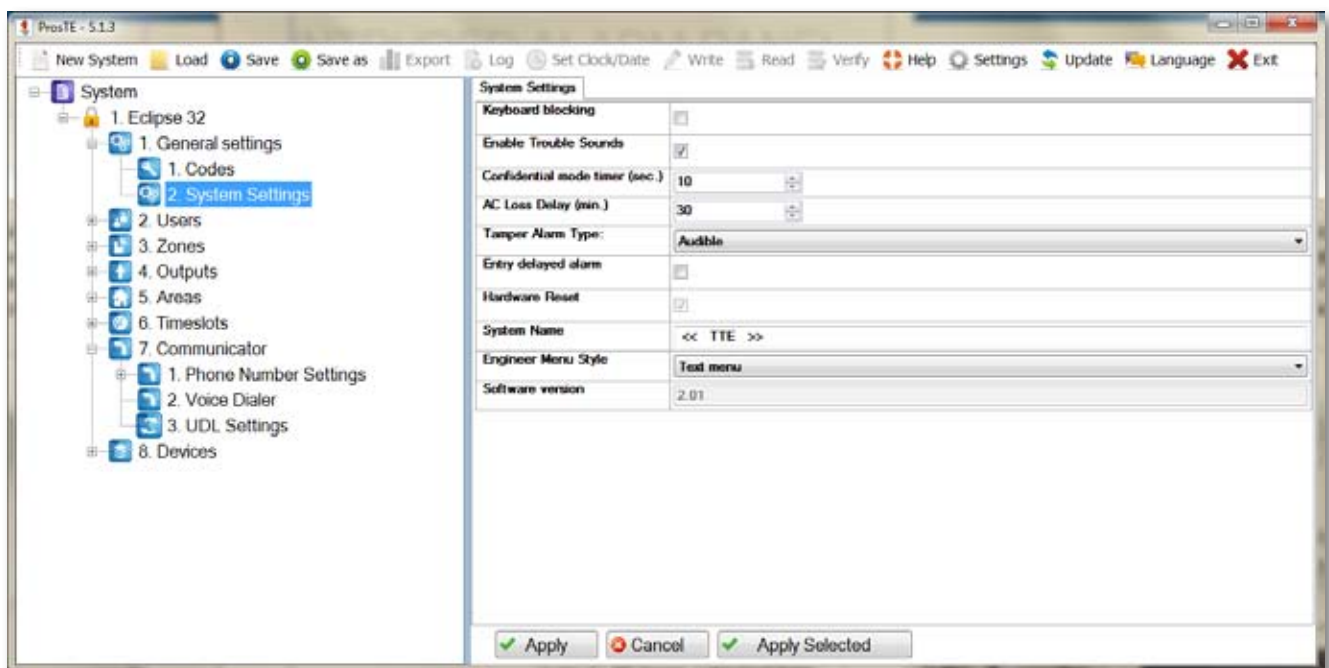
ProsTE is a software package for programming of Teletek Electronics intruder and fire alarm panels and modules. The software allows fast and user-friendly programming to the benefit of installers.

ProsTE Advantages

- Intuitive and user friendly graphic interface
- Easy programming of all system parameters
- Saves time and effort
- Allows creation of default configurations in TDF (Teletek Data Files) ready for use on site
- Decreases possibility of mistakes during programming
- No need to remember addresses or use programming manuals
- Completely free download and regular updates available at <http://www.teletek-electronics.com>
- Multilingual support
- Help wizard

Supported products

- Eclipse 8/16/32/99
- BRAVO Wireless panel
- IRIS
- SIMPO
- IRIS/SIMPO Repeater
- ARGUS
- TTE GPRS Standard
- TTE GPRS Simple
- TTE LAN
- TP2000 (ver. 8.xx)



ProsTE CABLE KIT



- Special cable kit for programming of Teletek Electronics' panels and modules:
 - Cable converter USB to RS232
 - Interface cable to RS232

GUARD VIEW

MONITORING SOFTWARE

Guard View is designed to serve companies acting in the field of monitoring of objects by centralized monitoring systems.

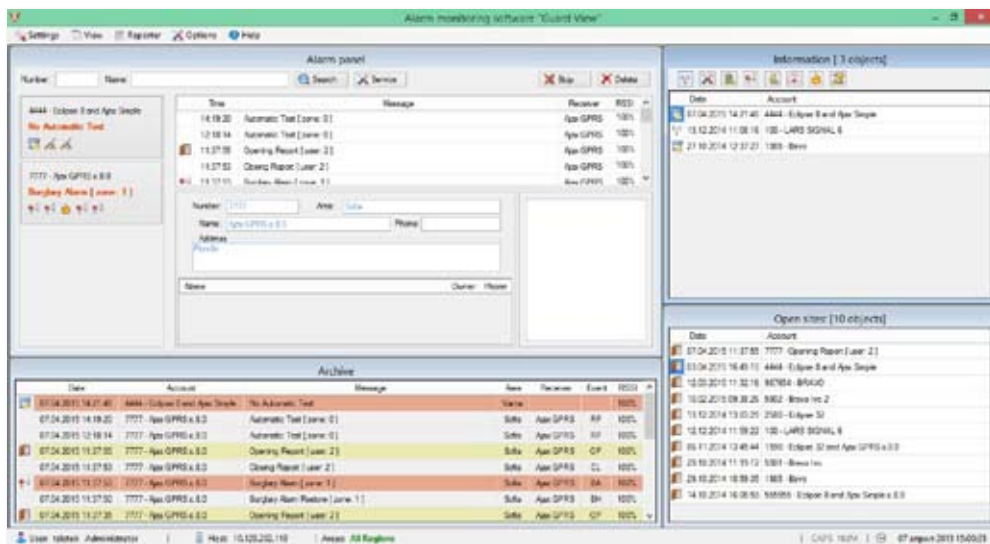
Compatible with LRR 8000 and AJAX SP.

Features

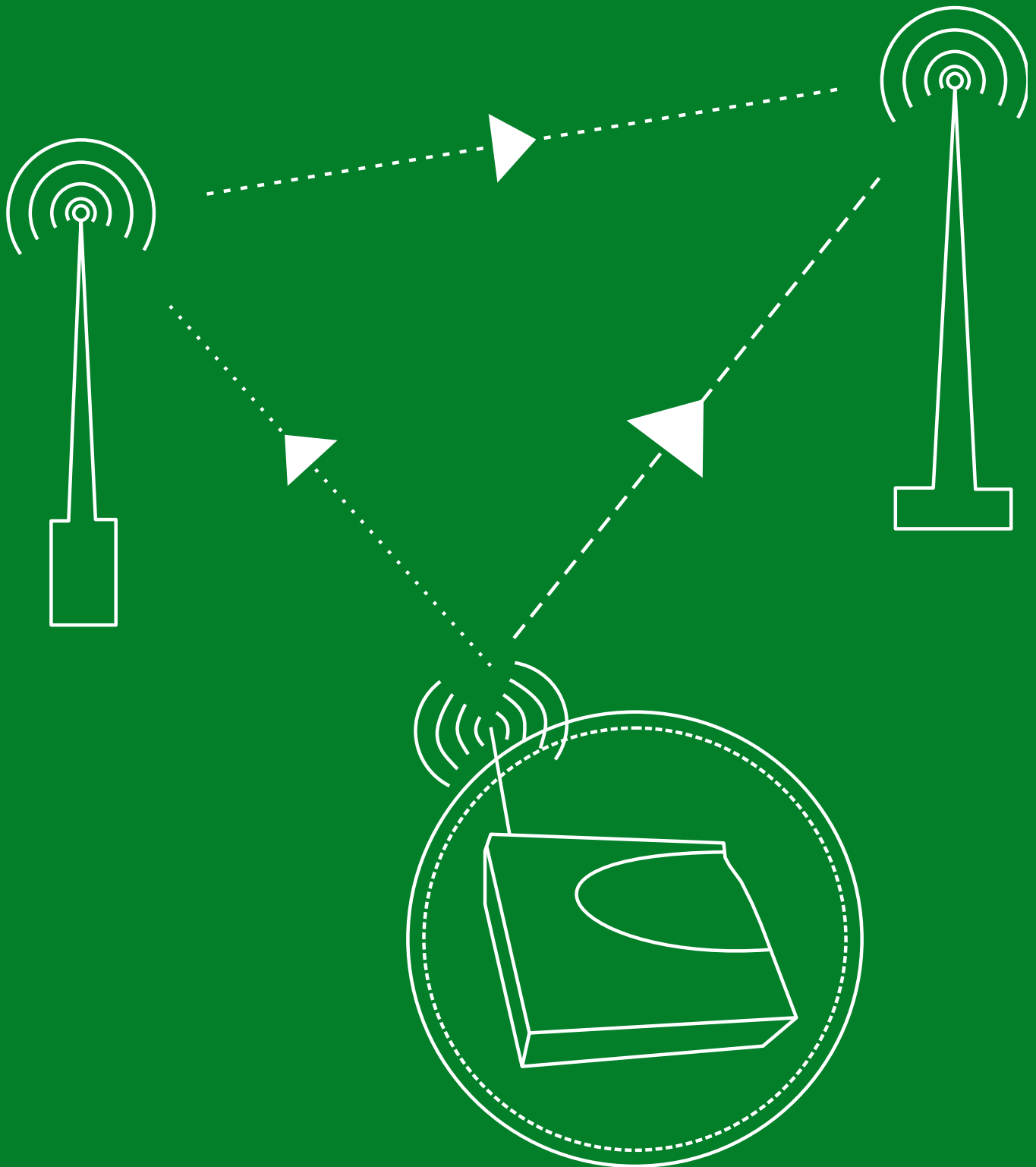
- Compatible with most of the popular alarm receivers and alarm protocols: LARS, Electronics Line, SIA, Ademco Contact ID
- MySQL database - SQL server for maintenance of the relational database with local and net clients
- Compatible with Windows operation systems - 32/64 bit's version with installed .NET Framework 4
- Alarm monitoring window for ensuring operator's activity
- Manager window for organizing the work regarding entering and updating the information about the protected objects as well as creating reports from the incoming signals in the archive
- Driver programs for receiving signals from COM and LAN ports
- Test program simulating signals from the protected objects in the database

Guard View Advantages

- Detailed information for all incoming messages
- Log in with different accounts – Operators, Managers, Administrator
- Complete file for every site with address, contact person, location details, picture of site, instructions for monitoring station staff
- Additional windows for filtered messages
- File for site in alarm
- Flexible database administration
- Up to 10 000 sites management
- Detailed reports for received messages
- Sending SMS messages to Users



LONG RANGE RADIO



LONG RANGE RADIO



LRR 8000 Central Station

- 2 Ports for receiving events from transmitters
- 1 Port for communication with repeaters
- 8192 sites capacity
- 1000 events log
- RSSI /measurement
- Computer connection via serial or USB port
- Metal box
- Bidirectional connection to LRR 8000 Repeater, using RADIAL protocol



LRR 8000 Repeater

- For expanding the application of LRR 8000
- Bidirectional connection to LRR 8000 Repeater, using RADIAL protocol
- 1000 events log
- RSSI /measurement
- Computer connection via serial or USB port
- Metal box
- IP64 for the metal housing



TP 2000 V/U

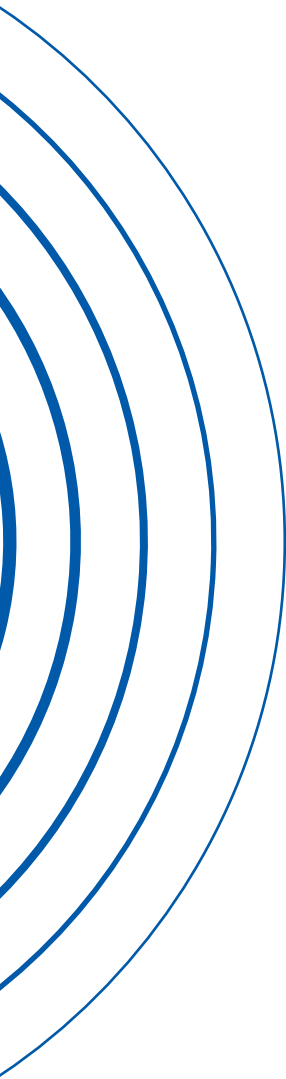
- Radio transmitter
- Serial communication to Eclipse 8 (via PGM4)
- Compatible with LRR 8000
- Supports 2 communication protocols - Electronics Line and LARS
- Operating frequency VHF range: 146 - 174MHz
- Operating frequency UHF range: 402 - 470MHz
- Direct programming with ProsTE software

FIRE ALARM SYSTEMS



Ask for your
FIRE ALARM SYSTEMS
Product Catalogue







www.
teletek-electronics
.com

a: "Srebarna" 14A Str, Sofia - 1407, BULGARIA
t: (+359 2) 9694 800
f: (+359 2) 962 52 13
e: info@teletek-electronics.bg

