



zenith

The technology of the future
and the Charm of the Past





VOC FREE



Street



Tunnels



Commercial



Industrial



Urban



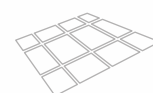
Sports



Large areas



Architectural



Photovoltaic

LED fixture
for urban lighting



Main features

Fixture composition: Die cast aluminium single body suitable for anchoring on pole or hanging.

Optical unit: Asymmetric and roto symmetric optics.

Life Span (L70B20): >80.000 h.

Remote control (optional): luminous flux Self-regulator on demand - status check and consumption control.

Mounting: Head-pole (standard), or hanging (through special accessories supplied on demand).

Focus: With the choice of Zenith is possible to receive a report on the calculation of the time needed to compensate the investment (PAY BACK).



Advantages

LED technology innovation for street traditional furniture:

Zenith is a technologically advanced lamp that allow to enjoy LED benefits preserving the look of traditional urban centers, avenues and historical/old town centers.

Ecofriendly and care of citizens:

LED doesn't contain toxic or harmful materials like Gas and mercury vapors as for traditional lamps.

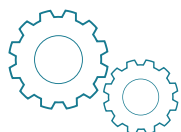
Zenith is an Ecofriendly product since it is produced using recyclable materials and its components are fractionable, disposable and recyclable.

Benefits for the Public administration

The usage of LED lamps technology allows to save up to 60% of electric power. The life span of Zenith is more than 5 times higher compared to the best discharge lamps (80.000hrs vs 15.000hrs if compared in terms of luminous flux decay).

With more than 15 years of continuous working, 12hrs a day, Zenith doesn't need any ordinary maintenance cost during this period of time.





Technical features

STANDARD COLOR



Antiqued black RAL 9011

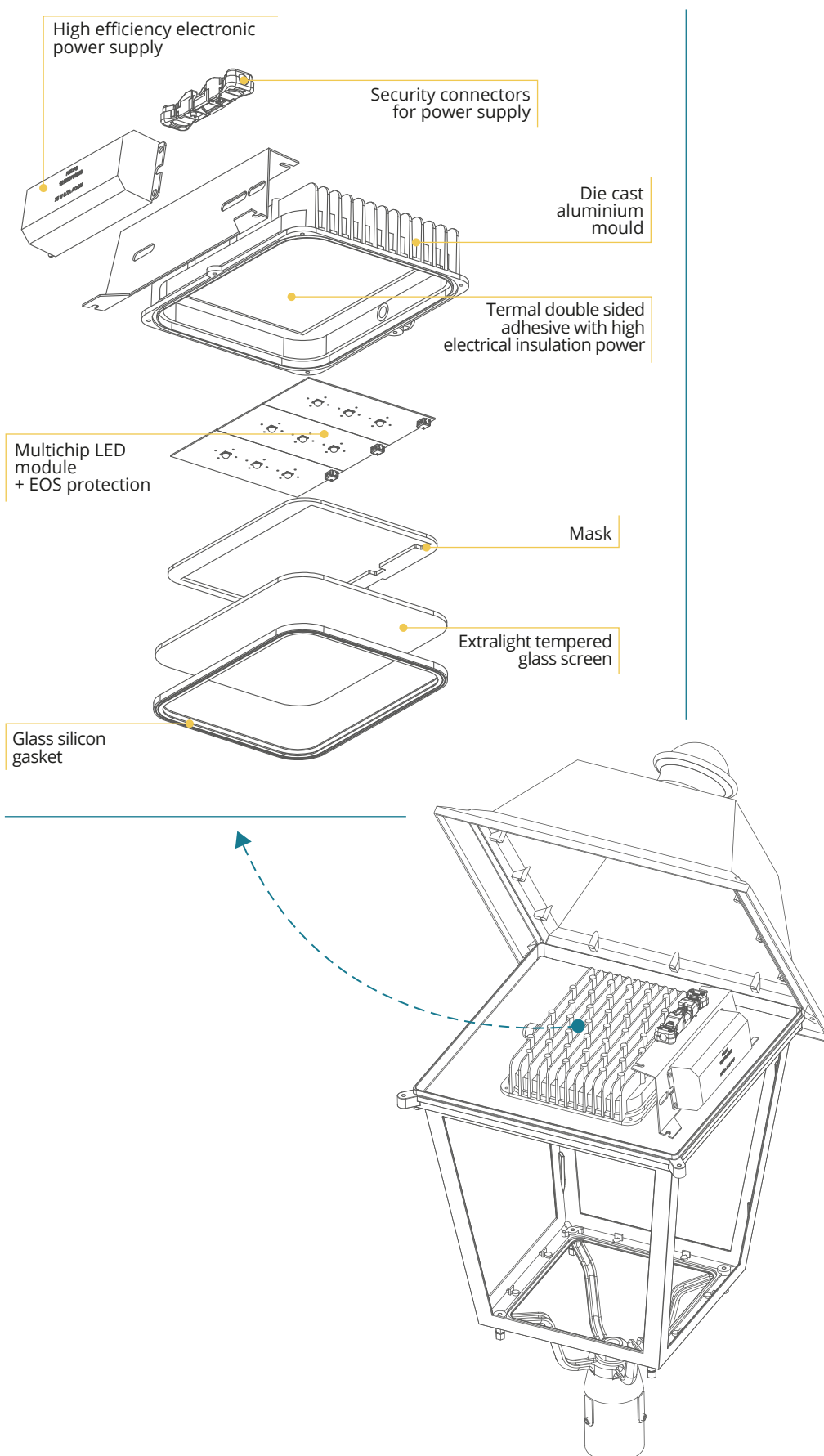
DETAILS

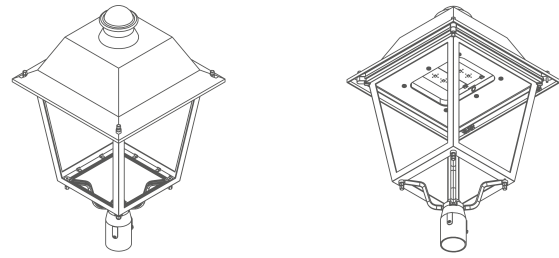
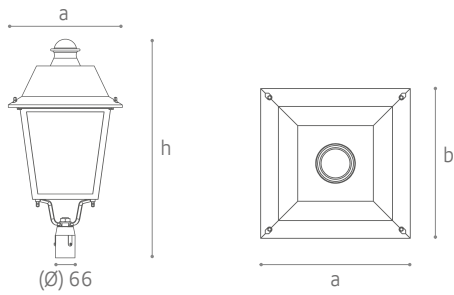
- Aluminium die cast body
- asymmetric and rotosymmetric optics
- CCT Standard: N (4000K ± 300K)
CCT optional: W (3000K ± 300K)
CCT optional: C (5000K ± 300K)
- Power factor: > 0.97
- CRI (Ra) Standard: 70...79
- Luminous source efficiency
 $\eta > 135 \text{lm/W @ 700mA}$
- Lifetime: 80.000 h
- Optional dimmable Driver
- Multichip LED Lumileds



APPLICATIONS

- Street furniture
- Old town center
- Square
- Avenues
- Pathways
- Parks
- Gardens
- Pedestrian areas





• SIZE



a = 425 mm
b = 425 mm
h = 760 mm
Ø = 66 mm

• WEIGHT



w = 10,5 Kg

Code	P [W]	F [lm]	No. LED	CCT [K]	I _F [mA]
Z3H-N[°]	25	3.240	3	4.000	700
Z3H-C[°]	25	3.240	3	5.000	700
Z3H-W[°]	25	2.700	3	3.000	700
Z4H-N[°]	34	4.320	4	4.000	700
Z4H-C[°]	34	4.320	4	5.000	700
Z4H-W[°]	34	3.600	4	3.000	700
Z6H-N[°]	50	6.480	6	4.000	700
Z6H-C[°]	50	6.480	6	5.000	700
Z6H-W[°]	50	5.400	6	3.000	700
Z8H-N[°]	67	8.640	8	4.000	700
Z8H-C[°]	67	8.640	8	5.000	700
Z8H-W[°]	67	7.200	8	3.000	700
Z9H-N[°]	75	9.720	9	4.000	700
Z9H-C[°]	75	9.720	9	5.000	700
Z9H-W[°]	75	8.100	9	3.000	700

ITEM CODE COMPOSITION

[°] = A1 - R1

FEATURES

• Standard



• Optional

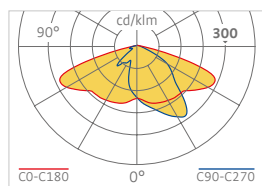


Photometric features

• ASYMMETRIC



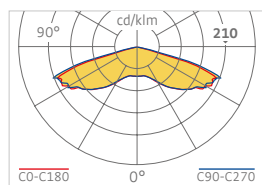
[A1] - Asymmetric 138°x50°



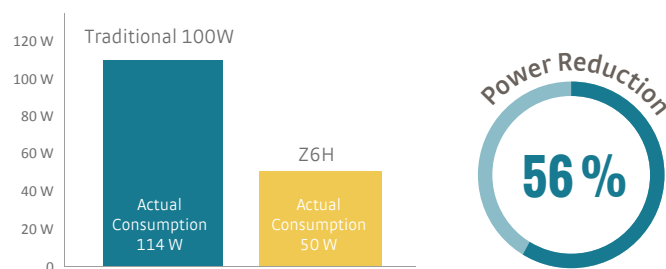
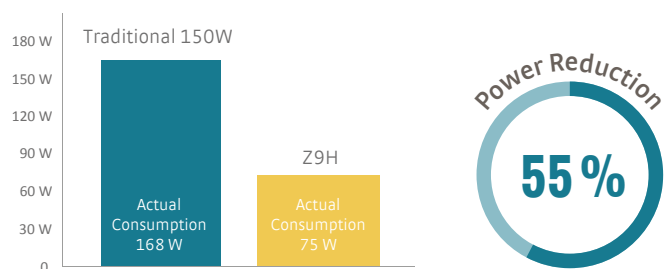
• ROTOSIMMETRYC



[R1] - Rotosimmetryc 138°x50°



Energy saving



Available colors

Antiqued black

