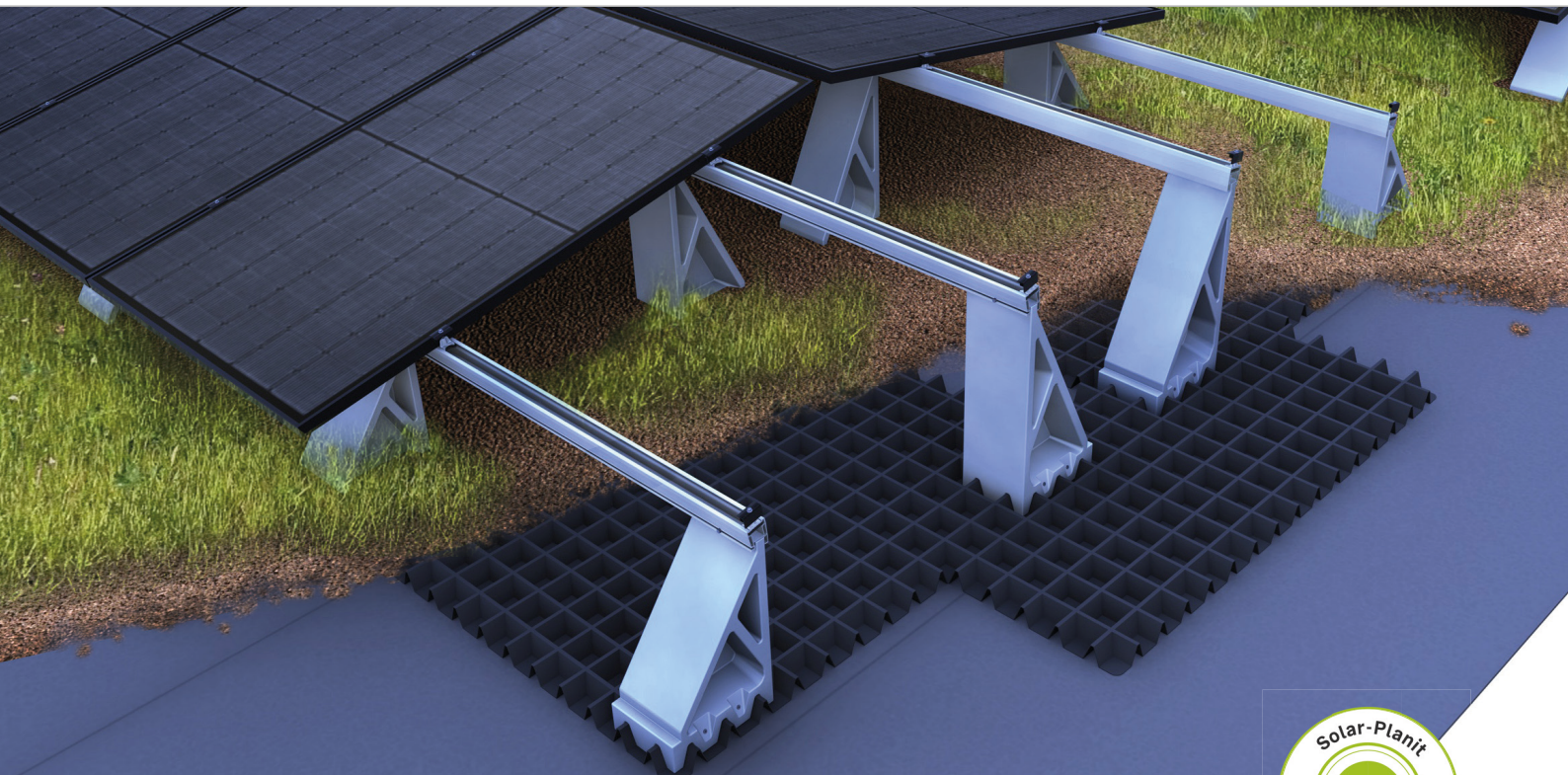
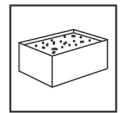


Green roof | East-west system

Clamping system with modules installed in portrait



Biotope, water storage, air conditioning – the all-in-one package for your roof!

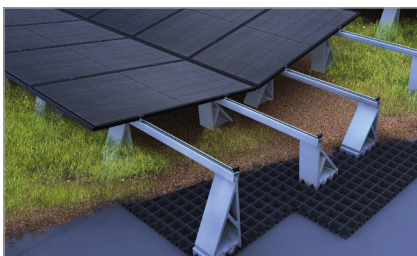
- Suitable for a wide range of green roofs
- Retention effect: Time-delayed water run-off relieves the sewage system – especially during heavy rainfall
- Natural cooling of the ambient temperature and the PV system
- Sustainable production made in Germany from recycled plastic

Product variants

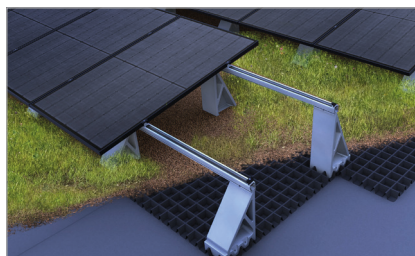
- Different layouts possible with the same components: east-west, butterfly, south-facing
- Only two clamps for all frame heights in blank and black anodized
- Many optional components for the perfect system: top cover C-rail, grounding connector, contact latch, optimiser fastening, etc.

YOUR BENEFITS

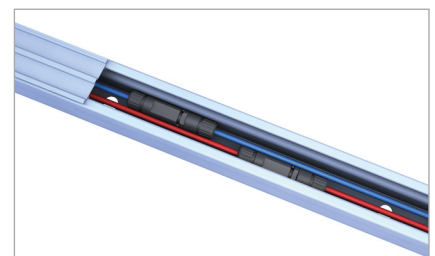
- Efficient use of space thanks to 10° module inclination and portrait installation
- Large substrate plates to offer sufficient space for ballasting
- Wind-tunnel-tested aerodynamics
- Sufficient distance from the roof surface for plant growth and sliding snow
- Interconnected panels for quick and easy assembly



Butterfly variant

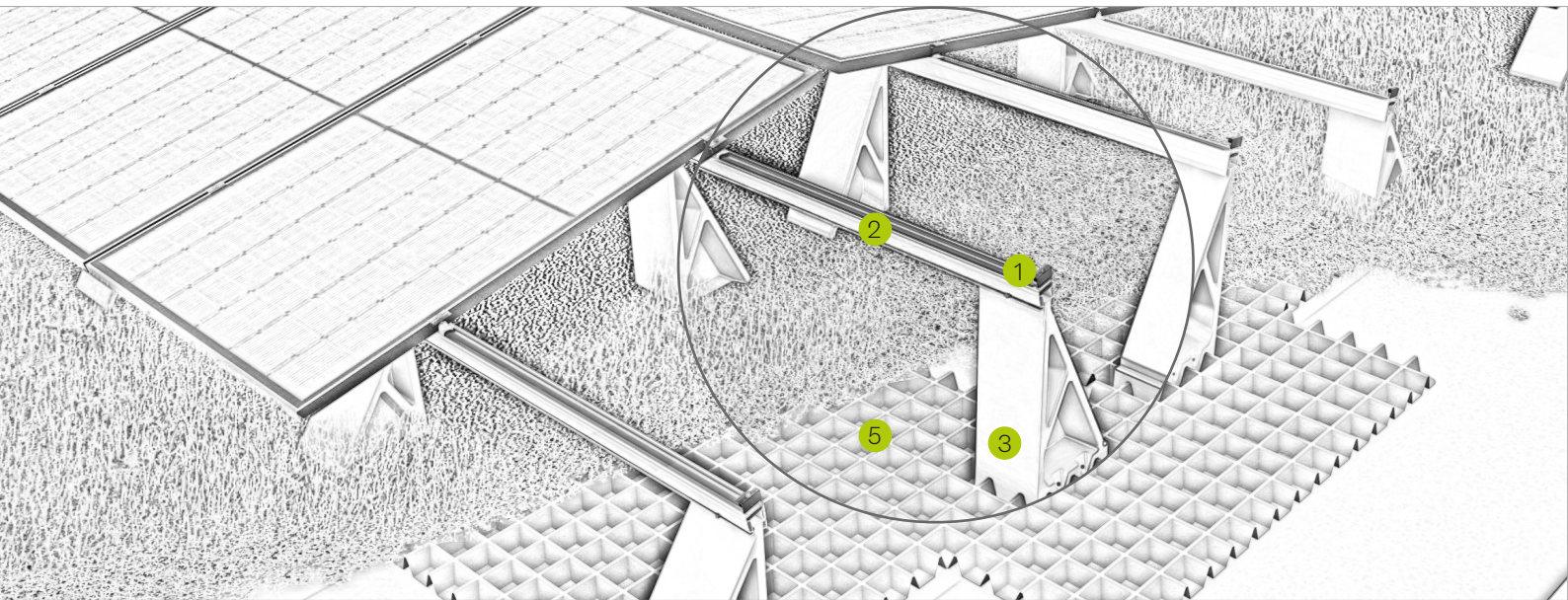


South-facing variant



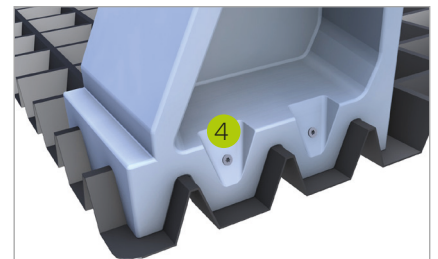
Module support rail also acts as a cable channel

Green Roof | East-west system

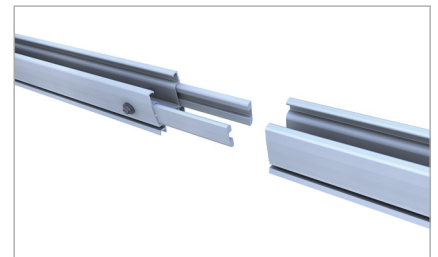


Pic Designation

- 1** Middle and end clamp
 - for frame heights of 30-42 mm and 43-52 mm
 - installation-friendly thanks to click-in mechanism
- 2** Module support rail
 - Also acts as a cable channel
 - Internal rail connector for maximum mounting freedom
- 3** Module support
 - Simple and flexible positioning
 - Positive fit with the substrate plate for excellent stability
- 4** Mounting screw
 - Fast and secure connection of the green roof components
- 5** Substrate plate
 - Plenty of substrate space for ballasting
 - Water storage volume supports the retention effect



Positive fit of substrate plate and support



Internal rail connector

Mounting tutorial

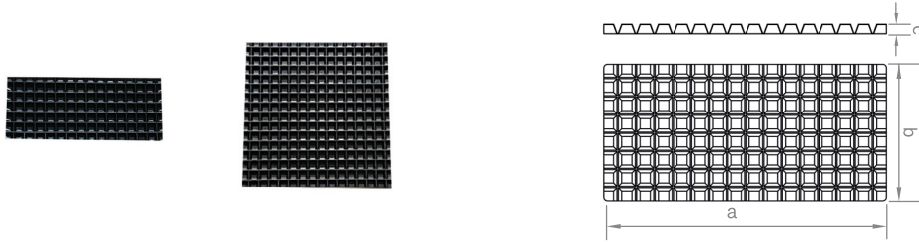


novotegra GmbH
Eisenbahnstraße 150 | 72072 Tübingen | Deutschland
Tel. +49 7071 98987-0, info@novotegra.com
www.novotegra.com

Subject to change without notice.
Last update: February 2022 / TP

Single items green roof

Substrate plate green roof



For the application of substrate for ballasting. Honeycomb structure in 10 cm grid for flexible positioning of supports. Made in Germany from recycled, UV-resistant plastic.

Item no.	Designation	a in mm	b in mm	c in mm	Material
03-001507	Substrate plate green roof	1550	1550	52	Recycled plastic
03-001508	Substrate plate 1/2 green roof	1550	750	52	Recycled plastic

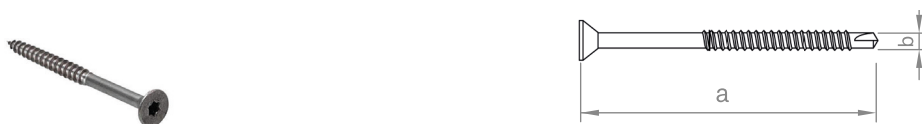
Module support green roof



Front or rear module support for the green roof system. Made in Germany from recycled, UV-resistant plastic.

Item no.	Designation	a in mm	b in mm	c in mm	Material
03-001505	Module support high green roof	625	300	200	Recycled plastic
03-001506	Module support low green roof	462	300	200	Recycled plastic

Module support mounting screw green roof



Countersunk screw with Torx 25 drive for connecting substrate plate and module support.

Item no.	Designation	a in mm	b in mm	c in mm	Material
03-001493	Module support mounting screw 6x80 green roof	80	6		St. galv.

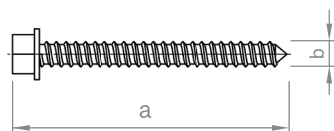
Green roof module support rail 5.40 m



Mounting rail with cable channel, can be used as a module support rail for the green roof system. Rail base with round, 15 mm holes in a 300 mm grid for drainage.

Item no.	Designation	a in mm	b in mm	c in mm	Material
03-001514	Green roof module support rail 5.40 m	54	69		Alu

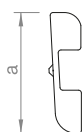
Module support rail mounting screw green roof



Threaded screw with hexagonal drive SW 8 for connecting module support and module support rail.

Item no.	Designation	a in mm	b in mm	c in mm	Material
03-001491	Module support rail mounting screw green roof	51	6,5		St. galv.

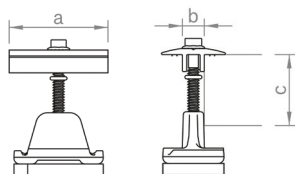
Rail connector C-rail 47 profile chambers



Connector C-rail 47, l = 200 mm, screw connection with four self-drilling screws with 8 AF hexagon drive.

Item no.	Designation	a in mm	b in mm	c in mm	Material
03-000925	Rail connector set C47 S	30			Alu / A2SS

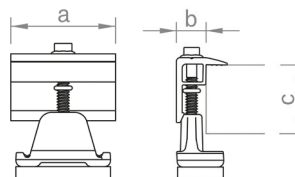
Middle clamps for C-rail, C-N-rail und green roof module support rail



Middle clamp for fixing the modules to the C-rail, C-N-rail or green roof module support rail. Installation-friendly thanks to click-in mechanism. Clamping screw with 8 AF hexagon drive. For frame heights of 30–42 mm or 43–52 mm, available in blank or black anodised variations.

Item no.	Designation	a in mm	b in mm	c in mm	Material
03-001345	Middle clamp 30-42 Set C	52	11,4	30–42	Alu / A2SS / PE
03-000285	Middle clamp 43-52 Set C	52	11,4	43–52	Alu / A2SS / PE
03-001346	Middle clamp 30-42 Set C black	52	11,4	30–42	Alu / A2SS / PE
03-000286	Middle clamp 43-52 Set C black	52	11,4	43–52	Alu / A2SS / PE

End clamps for C-rail, C-N-rail und green roof module support rail



End clamp for fixing the modules to the C-rail, C-N-rail or green roof module support rail. Installation-friendly thanks to click-in mechanism. Clamping screw with 8 AF hexagon drive. For frame heights of 30–42 mm or 43–52 mm, available in blank or black anodised variations.

Item no.	Designation	a in mm	b in mm	c in mm	Material
03-001236	End clamp 30-42 Set C	52	14	30–42	Alu / A2SS / PE
03-000287	End clamp 43-52 Set C	52	14	43–52	Alu / A2SS / PE
03-001237	End clamp 30-42 Set C sw	52	14	30–42	Alu / A2SS / PE
03-000288	End clamp 43-52 Set C sw	52	14	43–52	Alu / A2SS / PE