



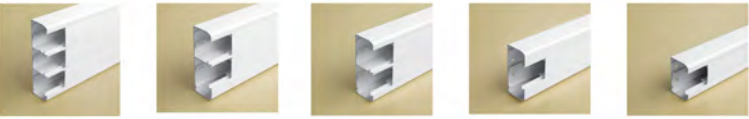
NEW DLP DIRECT CLIPPING

Flexibility and ease of installation

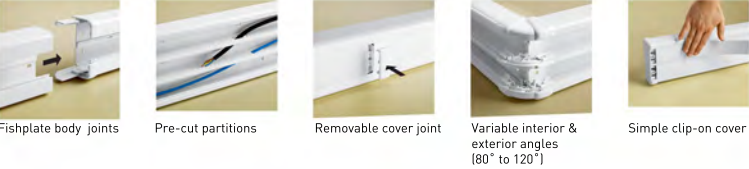
 **legrand**[®]

NEW DLP DIRECT CLIPPING

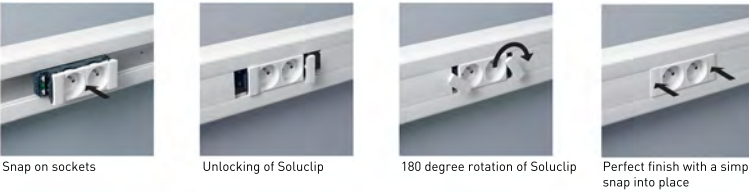
Flexibility and ease of installation



- Perfect separation of power and data cabling and large capacity in each compartment
- Ingenious accessories for simple, intuitive installation



- Quick and easy installation thanks to flexible cover and finishing accessories
- Can be equipped with power and data sockets for snap-on trunking



NEW DLP BLACK EDITION

- Black colour for modern design
- Quick and easy installation thanks to a flexible cover and finishing accessories
- Can be equipped with power and data sockets for snap-on trunking
- Durable, elegant and UV resistant



Simple management
for stock or
building site

/// One catalogue number = trunking + body + dividers



- /// Colour coded packaging allows for immediate recognition of product
- /// Simplified instructions on assembly are presented on the cover of the trunking
- /// Trunking is covered in protective film to guard against damage. This film also shows the various accessories available.



Choose your colour

Two colours of snap-on trunking for a perfect integration in any environment

MAIN BENEFITS

- 1 catalogue number = trunking + body + dividers
- Perfect separation of high and low currents and large capacity in each compartment
- Ingenious accessories for simple, intuitive installation

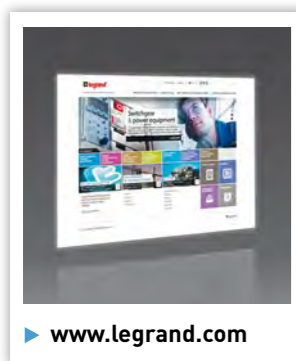


Black edition snap-on trunking.

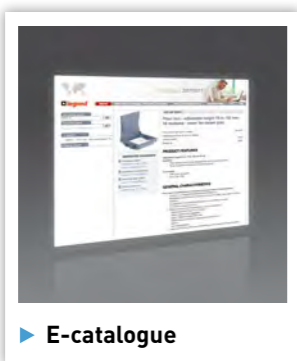


White snap-on trunking.

MORE INFORMATION



www.legrand.com



E-catalogue

snap-on trunking routing sections and accessories

TRUNKING			TRUNKING			AND ACCESSORIES			ANGLES			JUNCTIONS				ACCESSORIES	
Number of compartments	Cover width	Cross-section (mm)	Monobloc: body + cover ⁽¹⁾	Divider	Fishplate body joint	Stick-on body joint	Cover joint	End cap	Internal angles ⁽²⁾	External angles	Flat angles	Flat junctions with width 80 mm	Flat junctions with width 105 mm	Angled junctions 85/105/130 mm	Junction with floor duct 50 x 12/92 x 20	Extra cover	Adaptor for modular wiring accessories
		50 x 80	● 0 757 50	0 756 09	-	0 757 80	0 757 85	0 757 55	0 757 60	0 757 65	0 757 70	0 757 75	-	-	-	0 757 79	-
		50 x 105	○ 0 756 01	0 756 09	0 756 61	0 756 66	0 756 69	0 756 11	0 756 21	0 756 31	0 756 41	0 756 71	-	0 756 81 + 0 756 21	0 756 88	0 756 08	0 310 69
		50 x 130	● 0 757 52	-	-	0 757 80	2 x 0 757 85	0 757 57	0 757 62	0 757 67	0 757 72	0 757 75	-	-	-	0 757 79	-
		50 x 145	○ 0 756 03	-	0 756 61	0 756 66	2 x 0 756 69	0 756 13	0 756 23	0 756 33	0 756 43	0 756 71	0 756 75	0 756 81 + 0 756 23	0 756 88	0 756 08	0 310 69
		50 x 180	○ 0 756 04	-	0 756 63	1 0 756 66 + 2 0 756 67	2 x 0 756 69	0 756 14	0 756 24	0 756 34	0 756 44	1 0 756 71 + 2 0 756 72	1 0 756 75 + 2 0 756 76	0 756 81 + 0 756 24	0 756 88	0 756 08	0 310 69
		50 x 180	○ 0 756 06	-	0 756 61	0 756 66	3 x 0 756 69	0 756 16	0 756 26	0 756 36	0 756 46	0 756 71	0 756 75	0 756 81 + 0 756 26	0 756 88	0 756 08	0 310 69

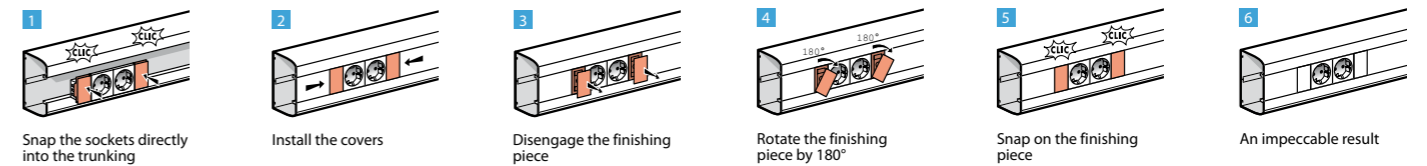
1: Partition(s) integral to the body
2: Internal and external corner angles supplied with multi-compartment partition joint

mechanisms for snap-on trunking

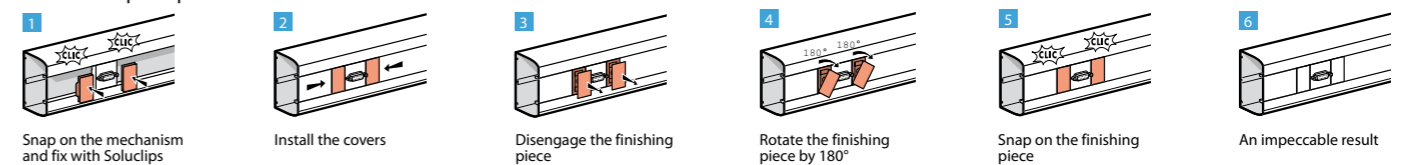
Mounting functions	
The Soluclip accessory is very easy to install with any Mosaic or Arteor function and offers the following features:	0 756 90
- Anti-slip - IP 4X	0 757 86



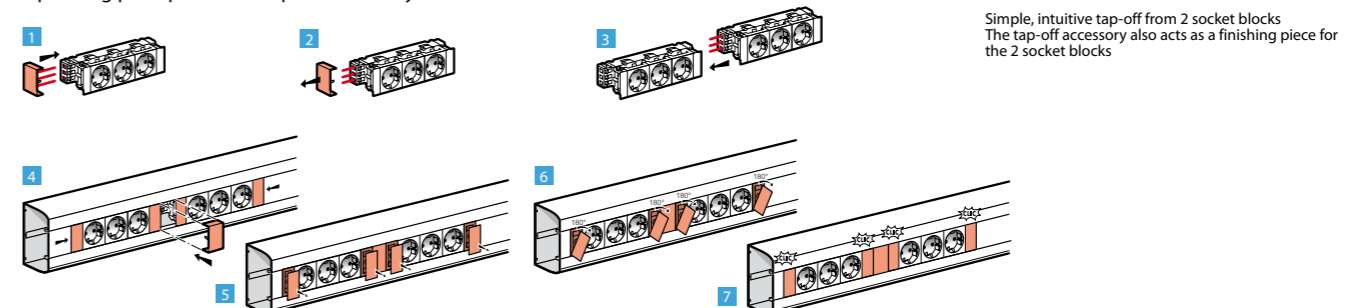
Installation principle for sockets for snap-on trunking



Installation principle for Mosaic or Arteor functions



Operating principle for the tap-off accessory



New DLP black edition

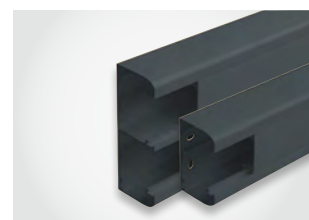
Modern design and time saving thanks to the snap-on trunking system

MAIN BENEFITS

- Black colour for a modern style
- Quick and easy installation thanks to flexible cover and finishing accessories
- Can be equipped with power and data sockets for snap-on trunking



▶▶▶ Snap-on trunking black edition.

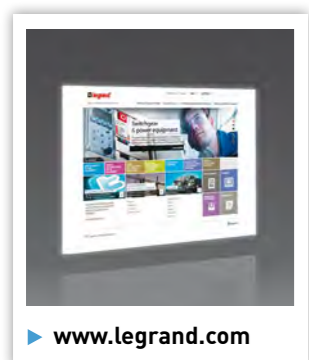


▶▶▶ 2 sizes supplied complete: body + cover + dividers

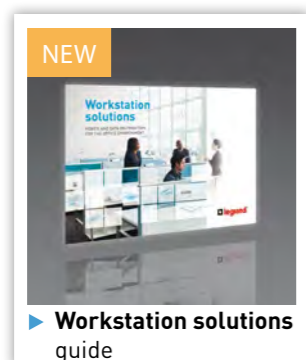


▶▶▶ Sockets with Soluclip guaranteed anti-pullout

LEARN MORE



▶ www.legrand.com



▶ **Workstation solutions guide**

sockets for snap-on trunking

compatibility...

The new range of DLP Direct Clipping trunking is compatible with all Arteor sockets.



0 756 90

10 **Black**
0 757 86

Soluclip accessory

For installation with any Mosaic or Arteor function

10 **White**
0 756 90

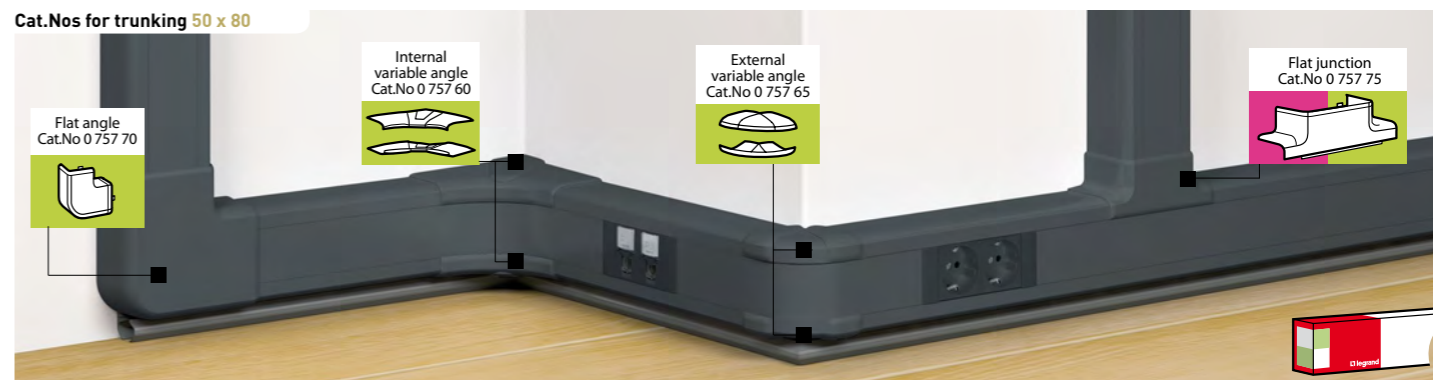
Soluclip accessory

For installation with any Snap-on function
Offers features such as anti-slip, anti-pullout, perfect cover finish, IP 40



NEW snap-on trunking black edition – 45 mm cover 50 x 80 and 50 x 130 routing sections and accessories

Cat.Nos for trunking 50 x 80



Cat.Nos for trunking 50 x 130



Selection chart p. 794-795

Pack	Cat.Nos	Snap-on trunking "Black edition"	Pack	Cat.Nos	Flat junctions
20	50 x 80 0 757 50	Can take any Mosaic or Arteor wiring accessory Length: 2 m 50 x 80 snap-on trunking 1-compartment trunking Includes: 1 body, 1 cover width 45	5	Black 0 757 75	With 80 and 130 mm wide sections Creates a junction with snap-on trunking 50 x 80 mm
12	50 x 130 0 757 52	50 x 130 snap-on trunking 2-compartment trunking Includes: 1 body with 2 compartments, 2 covers width 45	20	Black 0 757 79	Extra cover Width 45 mm Length 2 m
1015	50 x 80 0 757 60	Angles for snap-on trunking "Black edition" Internal angle, varies from 80° to 100° External angle, varies from 85° to 120° Flat angle at 90°	26	White 0 756 09	Extra partition Divider Length 2 m
1015	0 757 65		10	Black 0 757 80	Joint Stick-on body joint
1015	0 757 70		10	Black 0 757 85	Cover joint Width 45 mm
1015	50 x 80 0 757 55	End cap for snap-on trunking "Black edition" Left or right end cap			
	50 x 130 0 757 57				

Quick and simplified installation

Save time with the installation thanks to the snap-on trunking system

MAIN BENEFITS

- Quick and easy installation thanks to flexible cover and finishing accessories
- Can be equipped with power and data sockets for snap-on trunking
- Tap-off accessories for easy connection of socket units



Quick and easy installation with Soluclip

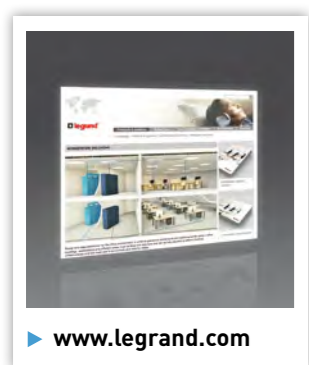


5 sizes supplied complete: body + cover + dividers

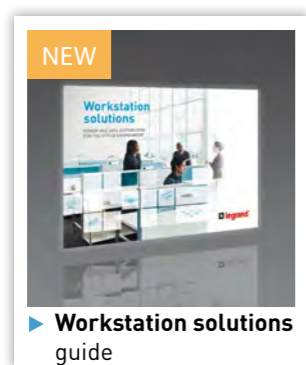


Sockets with Soluclip guaranteed anti-pullout, see opposite

LEARN MORE



www.legrand.com



Workstation solutions guide

sockets for snap-on trunking

compatibility...

The new range of DLP Direct Clipping trunking is compatible with all Arteor sockets.



0 756 90



10 White 0 756 90

Soluclip accessory

For installation with any Snap-on function Offers features such as anti-slip, anti-pullout, perfect cover finish, IP 40

10 Black 0 757 86

Soluclip accessory

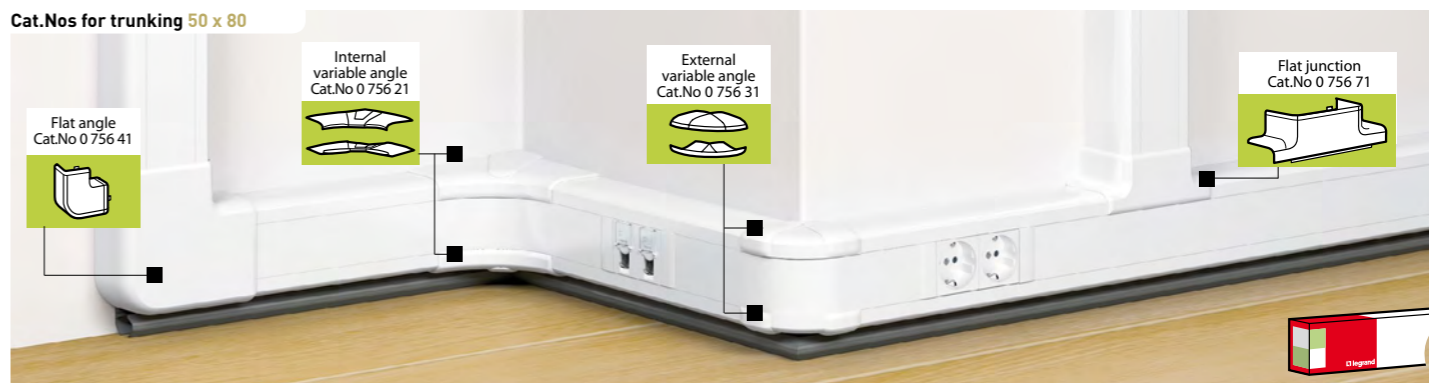
For installation with any Mosaic or Arteor function



Red catalogue numbers: New products

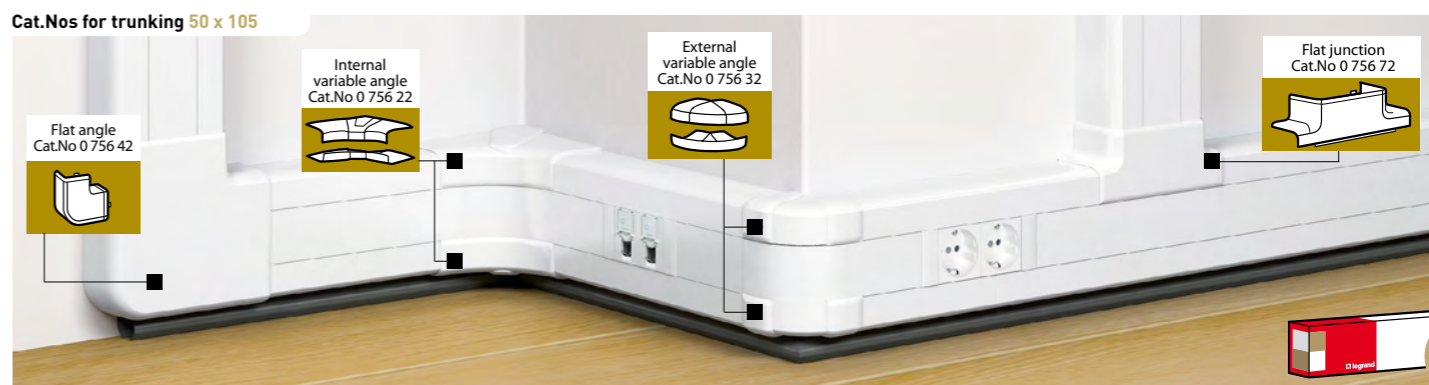
snap-on trunking - 45 mm cover

50 x 80 and 50 x 105 routing sections and accessories



Cat.Nos for trunking 50 x 80

Flat angle Cat.No 0 756 41
Internal variable angle Cat.No 0 756 21
External variable angle Cat.No 0 756 31
Flat junction Cat.No 0 756 71

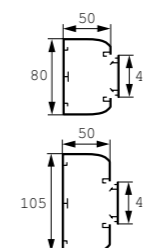


Cat.Nos for trunking 50 x 105

Flat angle Cat.No 0 756 42
Internal variable angle Cat.No 0 756 22
External variable angle Cat.No 0 756 32
Flat junction Cat.No 0 756 72

Selection chart p. 794-795
Wiring capacity chart p. 803

Pack	Cat.Nos	Snap-on trunking
20' 12'	50 x 80 0 756 01 50 x 105 0 756 02	1-compartment trunking Snap-on trunking Can take any Mosaic or Arteor wiring accessory Includes: - 1 body, width 45 mm - 1 cover, width 45 mm Length 2 m
20'	0 756 08	Extra cover Width 45 mm Length 2 m
26'	0 756 09	Extra partition Divider Length 2 m
10	50 x 80 0 756 61 50 x 105 0 756 62	Fishplate body joint Used to join 2 bodies and simplifies fixing sections to the wall - set of 2
20	0 756 66 0 756 67	Joint Stick-on body joint
10	0 756 69	Cover joint Cover joint, width 45 mm
24'	0 105 80	Height spacer Length 2 m, colour charcoal grey For fitting 15 mm from the ground
10	0 756 90	Soluclip accessory For installation with any Mosaic or Arteor function



Pack	Cat.Nos	Angles
10	50 x 80 0 756 21 50 x 105 0 756 22	Internal angle, varies from 80° to 100°
10	0 756 31 0 756 32	External angle, varies from 85° to 120°
10	0 756 41 0 756 42	Flat angle at 90°
10	50 x 80 0 756 11 50 x 105 0 756 12	End caps Left or right end cap
5	50 x 80 0 756 71 50 x 105 0 756 72	Flat junctions With 80 mm wide sections Creates a junction with snap-on trunking 50 x 80 mm
5	50 x 105 0 756 76	With 105 mm wide sections Creates a junction with snap-on trunking 50 x 105 mm
5	0 756 81	Angled junction Creates a junction in an internal angle with snap-on trunking 50 x 80 mm, 50 x 105 mm, 50 x 130 mm Must be used in conjunction with internal angle
5	0 756 88	Junction with floor duct Creates a junction with a floor duct size 50 x 12 mm or 92 x 20 mm

1: Number of metres in pack

snap-on trunking - 45 mm cover 50 x 130 and 50 x 145 routing sections and accessories

Cat.Nos for trunking 50 x 130

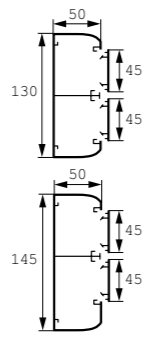


Cat.Nos for trunking 50 x 145



Selection chart p. 794-795
Wiring capacity chart p. 803

Pack	Cat.Nos	Snap-on trunking
12' 8'	50 x 130 50 x 145 0 756 03 0 756 04	2-compartment trunking Snap-on trunking Can take any Mosaic or Arteor wiring accessory Includes: - 1 body with 2 compartments - 2 covers, width 45 mm Length 2 m
20'	0 756 08	Extra cover Width 45 mm Length 2 m
10	50 x 130 50 x 145 0 756 61 0 756 63	Fishplate body joint Used to join 2 bodies and simplifies fixing sections to the wall - set of 2
20	0 756 66	Stick-on body joint For top part of body
20	50 x 145 0 756 67	For bottom part of body
10	0 756 69	Cover joint Cover joint, width 45 mm
24'	0 105 80	Height spacer Length 2 m, colour charcoal grey For fitting 15 mm from the ground
10	0 756 90	Soluclip accessory For installation with any Mosaic or Arteor function

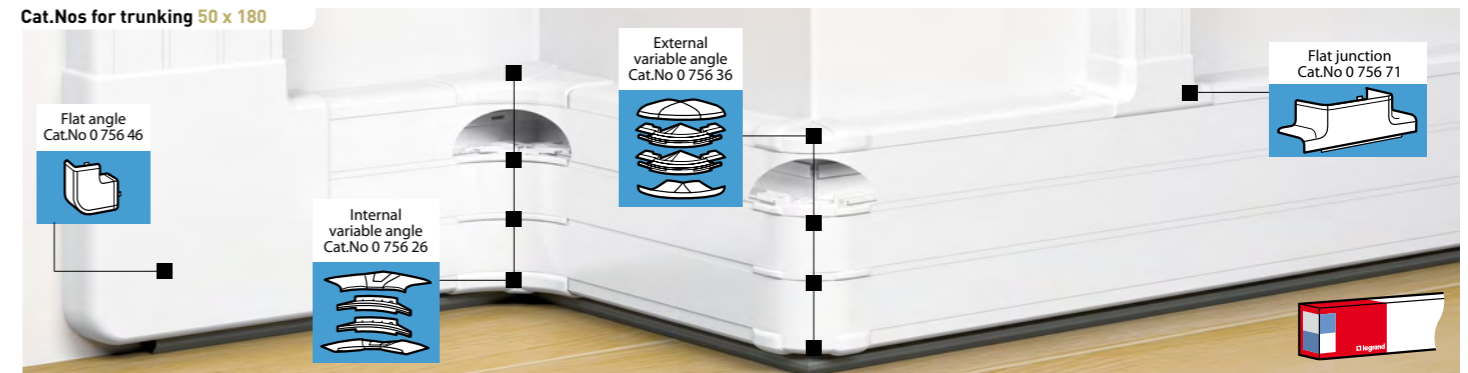


Pack	Cat.Nos	Angles
5	50 x 130 50 x 145 0 756 23 0 756 24	Internal angle, varies from 80° to 100°
5	0 756 33 0 756 34	External angle, varies from 85° to 120°
5	0 756 43 0 756 44	Flat angle at 90°
5	50 x 130 50 x 145 0 756 13 0 756 14	End caps Left or right end cap
5	50 x 130 50 x 145 0 756 71 0 756 72	Flat junctions For 80 mm wide downward trunking Creates a junction with snap-on trunking 50 x 80 mm
5	0 756 71	For 80 mm wide upward trunking Creates a junction with snap-on trunking 50 x 80 mm
5	0 756 75 0 756 76	For 105 mm wide downward trunking Creates a junction with snap-on trunking 50 x 105 mm
5	0 756 75	For 105 mm wide upward trunking Creates a junction with snap-on trunking 50 x 105 mm
5	0 756 81	Angled junction Creates a junction in an internal angle with snap-on trunking 50 x 80 mm, 50 x 105 mm, 50 x 130 mm Must be used in conjunction with internal angle
5	0 756 88	Junction with floor duct Creates a junction with a floor duct size 50 x 12 mm or 92 x 20 mm

1: Number of metres in pack

snap-on trunking 45 mm cover 50 x 180 routing sections and accessories

Cat.Nos for trunking 50 x 180



Example of installation:
One current type per compartment

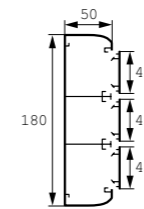


Example of installation:
Wiring accessories in central compartment and distribution in side compartments



Selection chart p. 794-795
Wiring capacity chart p. 803

Pack	Cat.Nos	Snap-on trunking
8'	50 x 180 0 756 06	3-compartment trunking Snap-on trunking Can take any Mosaic or Arteor wiring accessory Includes: - 1 body with 3 compartments - 3 flexible covers, width 45 mm Length 2 m
20'	0 756 08	Extra cover Width 45 mm Length 2 m
10	0 756 61	Fishplate body joint Used to join 2 bodies and simplifies fixing sections to the wall - set of 2
20	0 756 66	Stick-on body joints For top part of body
10'	0 756 69	Cover joint Cover joint, width 45 mm
24	0 105 80	Height spacer Length 2 m, colour charcoal grey For fitting 15 mm from the ground
10	0 756 90	Soluclip accessory For installation with any Mosaic or Arteor function



Pack	Cat.Nos	Angles
5	50 x 180 0 756 26	Internal angle, varies from 80° to 100°
5	0 756 36	External angle, varies from 85° to 120°
5	0 756 46	Flat angle at 90°
5	0 756 16	End cap Left or right end cap
5	0 756 71	Flat junctions With 80 mm wide sections Creates a junction with snap-on trunking 50 x 80 mm
5	0 756 75	With 105 mm wide sections Creates a junction with snap-on trunking 50 x 105 mm
5	0 756 81	Angled junction Creates a junction in an internal angle with snap-on trunking 50 x 80 mm, 50 x 105 mm, 50 x 130 mm Must be used in conjunction with internal angle
5	0 756 88	Junction with floor duct Creates a junction with a floor duct size 50 x 12 mm or 92 x 20 mm

1: Number of metres in pack

snap-on trunking

n New standard EN 50085-2-1

Standard EN 50085-2-1 concerns electrical trunking systems for installation on walls or on the ceiling. This new system standard proposes a tiered classification which allows performance to be adapted to the target applications. To satisfy the requirements of NF C 15-100, Legrand has conformed to the current specifications of NF C 68-104 in terms of both performance and level of functions provided by the system. To this end, our installation trunking (which carries electrical wiring accessories) is type 1 in the new standard.

Classification of snap-on trunking

New standard EN 50085-2-1		Level
6.1	Void	
6.2	Resistance to impact for installation and application	2.0 J
6.3	Minimum storage and transport temperature	- 25 °C
6.3	Minimum installation and application temperature	- 5 °C
6.3	Maximum application temperature	+ 60 °C
6.4	Resistance to flame propagation	Non-flame propagating
6.5	Electrical continuity characteristic	Without electrical continuity characteristic
6.6	Electrical insulating characteristic	With electrical insulating characteristic
6.7	Degrees of protection provided by enclosure	IP 40
6.9	The system access cover retention	With a tool
6.101	The position when surface mounted	Wall fixed Ceiling fixed Wall fixed and supported by the floor or other horizontal surface
6.102	Prevention of contact between liquids and insulated conductors and live parts in case of CTS/CDS mounted in a skirting position and wet-treatment of floor	Instructions restricting the installation position
6.103	The functions provided	Type 1
Rated current		500 V
Against mechanical shocks		IK 07

Composition and functions for snap-on trunking

Size (mm)	Number of compartments	Cover	Monobloc: body + cover	Stick-on body joint	Divider ⁽²⁾	End cap ⁽²⁾	Internal angle ⁽¹⁾	External angle ⁽¹⁾	Flat angle ⁽¹⁾	Cover joint ⁽²⁾	Flat junction ⁽²⁾	Cross-section (mm ²)
Black edition												
50 x 80 Cat.No 0 757 50	1 compartment	1 x 45	0 757 50	0 757 80	0 756 09	0 757 55	0 757 60	0 757 65	0 757 70	0 757 85	0 757 75	2934
50 x 130 Cat.No 0 757 52	2 compartments	2 x 45	0 757 52	0 757 80	-	0 757 57	0 757 62	0 757 67	0 757 72	0 757 85	0 757 75	2442/2442
White												
50 x 80 Cat.No 0 756 01	1 compartment	1 x 45	0 756 01	0 756 61	0 756 09	0 756 11	0 756 21	0 756 31	0 756 41	0 756 69	0 756 71	2934
50 x 105 Cat.No 0 756 02	1 compartment	1 x 45	0 756 02	0 756 62	0 756 09	0 756 12	0 756 22	0 756 32	0 756 42	0 756 69	0 756 18/19	4098
50 x 130 Cat.No 0 756 03	2 compartments	2 x 45	0 756 03	0 756 61	-	0 756 13	0 756 23	0 756 33	0 756 43	0 756 69	0 756 71/75	2442/2442
50 x 145 Cat.No 0 756 04	2 compartments	2 x 45	0 756 04	0 756 63	-	0 756 14	0 756 24	0 756 34	0 756 44	0 756 69	0 756 71/72/ 75/76	2442/3024
50 x 180 Cat.No 0 756 06	3 compartments	3 x 45	0 756 06	0 756 61	-	0 756 16	0 756 26	0 756 36	0 756 46	0 756 69	0 756 71/75	2442/1950/2442

1: Classification and performance are for a mounting at an angle of 90°
2: See mounting and assembling instructions on technical sheets, boxes, or on www.legrand.fr
3: Wiring accessories: Mosaic sockets: Cat.Nos 0 772 02/03/22/23

n Wiring capacity

Size (mm)	Number of compartments	Cover width	Cross-section	Capacity	Ømax.	1.5 mm ²	2.5 mm ²	4 mm ²	6 mm ²	3 x 1.5 mm ²	3 x 2.5 mm ²	UTP & FTP Cat.6
50 x 80 Cat.No 0 756 01/0 757 50	1 compartment	45	2934	Max.	38	177	131	115	85	26	19	58
			1564	with sockets for trunking		94	70	61	45	13	10	31
			1604	with LEXIC support		97	72	63	46	14	10	32
50 x 105 Cat.No 0 756 02	1 compartment	45	4098	Max.	38	248	184	161	119	36	26	81
			2728	with sockets for trunking		165	122	107	79	24	17	54
			2768	with LEXIC support		167	124	109	80	24	18	55
50 x 130 Cat.No 0 756 03/0 757 52	2 compartments	45	2442	Max.	38	148	109	96	71	21	16	48
			1072	with sockets for trunking		65	48	42	31	9	7	21
			1112	with LEXIC support		67	50	43	32	9	7	22
	45	2442	Max.		148	109	96	71	21	16	48	
		1072	with sockets for trunking		65	48	42	31	9	7	21	
		1112	with LEXIC support		67	50	43	32	9	7	22	
50 x 145 Cat.No 0 756 04	2 compartments	45	2442	Max.	38	148	109	96	71	21	16	48
			1072	with sockets for trunking		65	48	42	31	9	7	21
			1112	with LEXIC support		67	50	43	32	9	7	22
	45	3024	Max.	38	183	135	119	88	26	19	60	
		1654	with sockets for trunking		100	74	65	48	14	10	33	
		1694	with LEXIC support		102	76	66	49	15	11	33	
50 x 180 Cat.No 0 756 06	3 compartments	45	2442	Max.	38	148	109	96	71	21	16	48
			1072	with sockets for trunking		65	48	42	31	9	7	21
			1112	with LEXIC support		67	50	43	32	9	7	22
	45	1950	Max.	38	118	87	76	56	17	12	38	
		580	with sockets for trunking		35	26	22	16	5	3	11	
		620	with LEXIC support		37	27	24	18	5	4	12	
45	2442	Max.	38	148	109	96	71	21	16	48		
	1072	with sockets for trunking		65	48	42	31	9	7	21		
			1112	with LEXIC support		67	50	43	32	9	7	22

n Choice and installation of junctions

Size (mm)	Vertical trunking	Flat junctions		Angled junctions	
		Horizontal trunking	50 x 80 mm	50 x 105 mm	50 x 130 mm
Black edition					
50 x 80 Cat.No 0 757 50	1 compartment	0 757 75	-	-	-
50 x 130 Cat.No 0 757 52	2 compartments	0 757 75	-	-	-
White					
50 x 80 Cat.No 0 756 01	1 compartment	0 756 71	0 756 81 + 0 756 21	-	0 756 81 + 0 756 21
50 x 105 Cat.No 0 756 02	1 compartment	0 756 72	-	0 756 76	0 756 81 + 0 756 22
50 x 130 Cat.No 0 756 03	2 compartments	0 756 71	0 756 81 + 0 756 23	-	0 756 81 + 0 756 23
50 x 145 Cat.No 0 756 04	2 compartments	0 756 71 (upward) 0 756 72 (downward)	0 756 81 + 0 756 24	0 756 75 (upward) 0 756 76 (downward)	0 756 81 + 0 756 24
50 x 180 Cat.No 0 756 06	3 compartments	0 756 71	0 756 81 + 0 756 26	-	0 756 81 + 0 756 26