

# CoreLine Waterproof

## WT120C LED60S/840 PSU L1500



WT120C - LED Module, system flux 6000 lm - Power supply unit

Whether for a new building or renovation of an existing space, customers want lighting solutions that provide quality of light and substantial energy and maintenance savings. The new CoreLine Waterproof range of LED products can be used to replace traditional waterproof luminaires with fluorescent lamps. The process of selecting, installing and maintaining is so easy – it's a simple switch.

### Product data

#### • General Information

|                               |   |
|-------------------------------|---|
| Product Family Code           | WT120C [ WT120C]                            |
| Number of light sources       | 1 [ 1 pc]                                   |
| Lamp family code              | LED60S [ LED Module, system flux 6000 lm]   |
| Light source color            | 840 neutral white                           |
| Light source replaceable      | No  |
| Driver/power unit/transformer | PSU [ Power supply unit]                    |
| Driver included               | Yes   |
| Optical cover/lens type       | PC [ Polycarbonate bowl/cover]              |
| Emergency lighting            | -   |
| Connection                    | PIP [ Push-in connector and pull relief]    |
| Protection class IEC          | Safety class I (I)                          |
| Glow-wire test                | 850/30 [ Temperature 850 °C, duration 30 s] |
| Flammability mark             | For mounting on normally flammable surfaces |
| CE mark                       | CE mark                                     |
| ENEC mark                     | ENEC mark                                   |
| UL mark                       | -   |
| Length                        | 1500 mm                                     |
| Initial input power           | 57 W  |

#### • Light Technical

|                         |        |
|-------------------------|--------|
| Luminous flux tolerance | +/-10% |
|-------------------------|--------|

#### • Operating and Electrical

|                 |              |
|-----------------|--------------|
| Input Voltage   | 220 to 240 V |
| Input Frequency | 50-60 Hz     |

#### • Temperature

|                             |        |
|-----------------------------|--------|
| Average ambient temperature | +25 °C |
|-----------------------------|--------|

#### • Controls and Dimming

|          |    |
|----------|----|
| Dimmable | No |
|----------|----|

#### • Mechanical and Housing

|                             |               |
|-----------------------------|---------------|
| Housing Material            | Polycarbonate |
| Optic material              | Polycarbonate |
| Optical cover/lens material | Polycarbonate |

#### • Approval and Application

|                              |   |
|------------------------------|---|
| Ingress protection code      | IP65 [ Dust penetration-protected, jet-proof] |
| Mech. impact protection code | IK08 [ 5 J ] vandal-protected]                |

#### • Initial Performance (IEC Compliant)

|                                |                             |
|--------------------------------|-----------------------------|
| Initial luminous flux          | 6000 lm                     |
| Initial LED luminaire efficacy | 105 lm/W                    |
| Init. Corr. Color Temperature  | 4000 K                      |
| Init. Color Rendering Index    | <gt;/>80                    |
| Initial chromaticity           | (0.38, 0.38) SDCM <lt;/>3.5 |

# PHILIPS

# CoreLine Waterproof

## • Over Time Performance (IEC Compliant)

|                                  |         |
|----------------------------------|---------|
| Median useful life<br>L90B50     | 15000 h |
| Median useful life<br>L80B50     | 30000 h |
| Median useful life<br>L70B50     | 50000 h |
| Driver failure rate at<br>5000 h | 1 %     |

## • Application Conditions

Ambient temperature range -20 to +35 °C

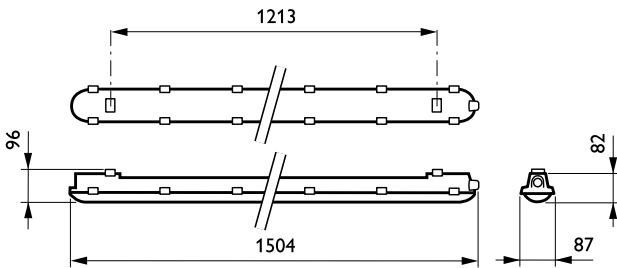
Suitable for random switching Yes (relates to presence/ movement detection and daylight harvesting)

## • Product Data

|                     |                             |
|---------------------|-----------------------------|
| Full product code   | 871829184049700             |
| Order product name  | WT120C LED60S/840 PSU L1500 |
| Order code          | 910500453339                |
| Material Nr. (12NC) | 910500453339                |



## Dimensional drawing

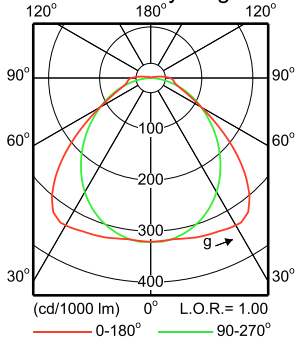




WT120C L1500 1xLED60S/840

1 x 6000 lm

Polar intensity diagram



Light output ratio 1.00  
 Service upward 0.03  
 Service downward 0.97

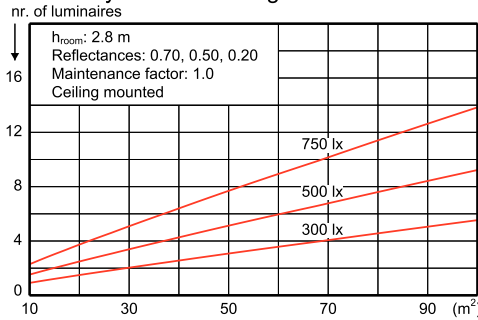
CIE flux code 48 81 95 97 100

S/H ratio crosswise max. 1.8  
 lengthwise max. 1.7

UGR<sub>cen</sub> (4Hx8H, 0.25H) 25  
 UTE71-121: 0.97D + 0.03T

LVW1837800

Quantity estimation diagram

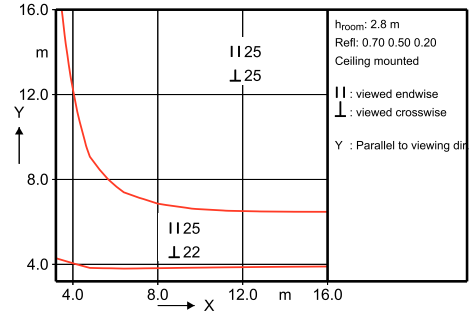


Utilisation factor table

| Room Index k | Reflectances for ceiling, walls and working plane (CIE) |      |      |      |      |      |      |      |      |      |      |      |
|--------------|---|------|------|------|------|------|------|------|------|------|------|------|
|              | 0.80  | 0.80 | 0.70 | 0.70 | 0.70 | 0.70 | 0.50 | 0.50 | 0.30 | 0.30 | 0.00 | 0.00 |
| 0.60         | 0.48  | 0.46 | 0.47 | 0.46 | 0.45 | 0.38 | 0.37 | 0.32 | 0.36 | 0.32 | 0.30 | 0.38 |
| 0.80         | 0.59  | 0.55 | 0.58 | 0.56 | 0.55 | 0.47 | 0.46 | 0.41 | 0.45 | 0.41 | 0.38 | 0.46 |
| 1.00         | 0.68  | 0.63 | 0.66 | 0.64 | 0.62 | 0.55 | 0.54 | 0.49 | 0.53 | 0.48 | 0.46 | 0.53 |
| 1.25         | 0.77  | 0.70 | 0.75 | 0.72 | 0.69 | 0.62 | 0.61 | 0.56 | 0.60 | 0.56 | 0.53 | 0.61 |
| 1.50         | 0.83  | 0.75 | 0.81 | 0.77 | 0.74 | 0.68 | 0.67 | 0.62 | 0.65 | 0.61 | 0.58 | 0.67 |
| 2.00         | 0.93  | 0.83 | 0.90 | 0.86 | 0.82 | 0.76 | 0.75 | 0.71 | 0.73 | 0.70 | 0.67 | 0.76 |
| 2.50         | 0.99  | 0.88 | 0.96 | 0.91 | 0.86 | 0.82 | 0.80 | 0.76 | 0.78 | 0.75 | 0.72 | 0.81 |
| 3.00         | 1.04  | 0.91 | 1.01 | 0.95 | 0.90 | 0.85 | 0.83 | 0.80 | 0.82 | 0.79 | 0.76 | 0.85 |
| 4.00         | 1.10  | 0.95 | 1.06 | 0.99 | 0.93 | 0.90 | 0.88 | 0.85 | 0.86 | 0.84 | 0.80 | 0.89 |
| 5.00         | 1.13  | 0.97 | 1.09 | 1.02 | 0.96 | 0.93 | 0.91 | 0.88 | 0.88 | 0.86 | 0.83 | 0.91 |

Ceiling mounted

UGR diagram



Luminance Table

| Plane Cone | 0.0   | 45.0  | 90.0  |
|------------|-------|-------|-------|
| 45.0       | 14024 | 16012 | 13131 |
| 50.0       | 11918 | 15007 | 12483 |
| 55.0       | 9590  | 12906 | 11774 |
| 60.0       | 7543  | 10235 | 11121 |
| 65.0       | 6066  | 7650  | 10503 |
| 70.0       | 5130  | 5697  | 9848  |
| 75.0       | 4733  | 4544  | 8963  |
| 80.0       | 4903  | 3972  | 7525  |
| 85.0       | 5522  | 3937  | 5197  |
| 90.0       | 6069  | 4438  | 7110  |

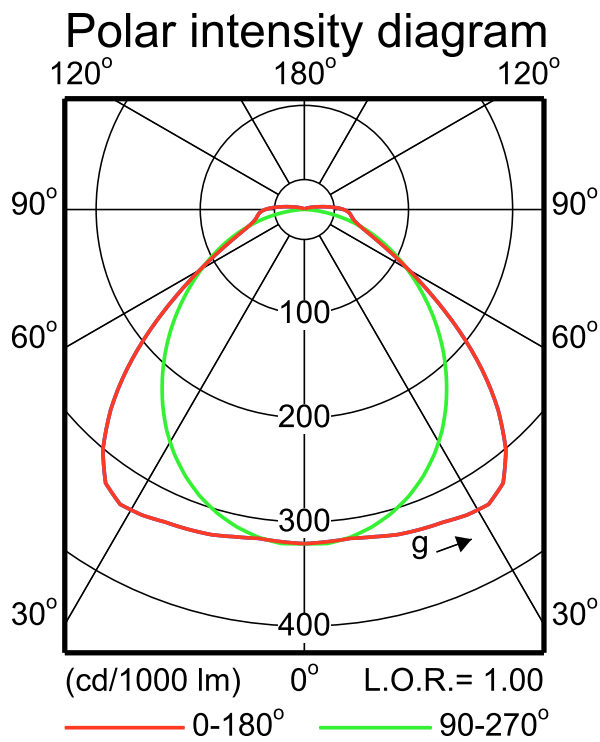
(cd/m<sup>2</sup>)

2015-09-08



WT120C L1500 1xLED60S/840

1 x 6000 lm



LVW1837800

2015-09-08

IFPC1\_WT120C L1500 1xLED60S840.EPS



© 2016 Philips Lighting Holding B.V.  
All rights reserved.

Specifications are subject to change without notice. Trademarks are the property of Koninklijke Philips N.V. (Royal Philips) or their respective owners.

[www.philips.com/lighting](http://www.philips.com/lighting)

2016, February 3  
data subject to change