

GRAFIAS SURFACED

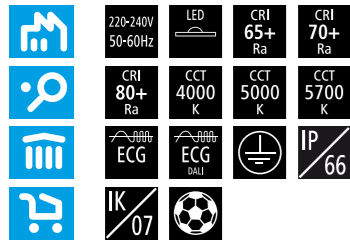
POLISHED
LED

LED

FASTRUNNER



Grafias Surfaceted



EN

Mounting
Ceiling surfaced (SFD)
Light source
LED
Optical system
Polished reflector (PRE)
Wiring
Electronic control gear FIX/DALI (ECG/EDA)
Materials
Housing: die-cast aluminium
Reflector: evaporative coated PC
Cover: transparent hardened glass
Surface finish
Housing: black RAL 9005 (B05)
Accessories
Additional reflector with 50° beam angle
Service lifetime
100,000 hours/L80
Ambient temperature
From -40 °C to +40 °C

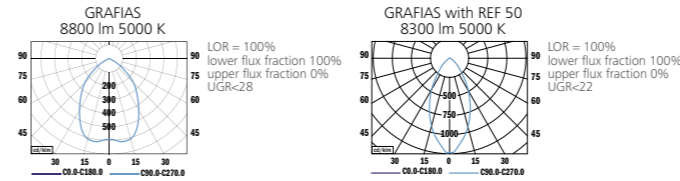
DE

Montage
Deckenleuchte (SFD)
Lichtquelle
LED
Optisches System
Polierter Reflektor (PRE)
Vorschaltgerät
Elektronisches Vorschaltgerät FIX/DALI (ECG/EDA)
Material
Körper: Aluminiumdruckguss
Reflektor: PC-eporative Beschichtung
Abdeckung: durchsichtig gehärteter Glas
Oberflächenveredelung
Körper: Schwarz RAL 9005 (B05)
Zubehör
Zusätzlicher Reflektor mit Ausstrahlungswinkel 50°
Lebensdauer
100,000 Stunden/L80
Umgebungstemperatur
Von -40 °C bis +40 °C

FR

Montage
Plafonnier apparent (SFD)
Source lumineuse
LED
Système optique
Réflecteur poli (PRE)
Équipement électrique
Ballast électronique FIX/DALI (ECG/EDA)
Matériels
Corps: aluminium moulé sous pression
Réflecteur: PC-évaporative revêtement
Couvercle: verre trempé transparente
Finition de surface
Corps: noir RAL 9005 (B05)
Accessoires
Réflecteur supplémentaire avec 50° angle de faisceau
Durée de vie utile
100,000 heures/L80
Température ambiante
De -40 °C à +40 °C

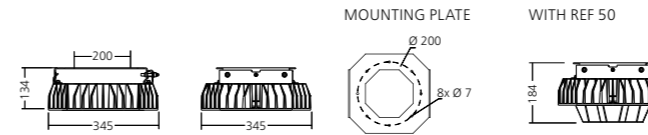
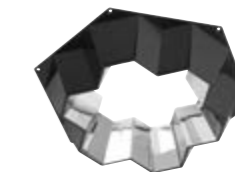
PHOTOMETRY



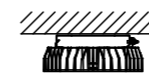
SURFACED WITH REF 50



REF 50



MOUNTING



TYPE	NET LUMEN OUTPUT (at Ta = 25 °C) (lm)	POWER CONSUMPTION (W)	SYSTEM EFFICACY (lm/W)	COLOUR RENDERING INDEX CRI (Ra)	CORRELATED COLOUR TEMPERATURE CCT (K)	BEAM ANGLE (C0-180, C90-270)	WEIGHT (kg)
GRAFIAS SFD	7200	99	73	80+	4000	70°, 77°	9.0
GRAFIAS SFD	8800	99	89	70+	5000	70°, 77°	9.0
GRAFIAS SFD	13,600	140	97	80+	4000	70°, 77°	9.0
GRAFIAS SFD	17,200	140	123	65+	5700	70°, 77°	9.0
GRAFIAS SFD REF	6800	99	69	80+	4000	50°	9.2
GRAFIAS SFD REF	8300	99	84	70+	5000	50°	9.2
GRAFIAS SFD REF	12,800	140	91	80+	4000	50°	9.2
GRAFIAS SFD REF	16,200	140	116	65+	5700	50°	9.2

Luminous flux tolerance +/- 10%.

SK

Montáž
Prisadené (SFD)
Svetelný zdroj
LED
Optický systém
Leštený reflektor (PRE)
Elektrická výbava
Elektronický predradník FIX/DALI (ECG/EDA)
Material
Teleso: hliníkový odlitok
Reflektor: PC-vákuovo pokovený
Kryt: transparentné tvrdené sklo
Povrchová úprava
Teleso: čierna RAL 9005 (B05)
Príslušenstvo
Prídavný reflektor s 50° uhlom vyžarovania
Service life
100,000 hodín/L80
Teplota okolia
Od -40 °C do +40 °C

ES

Montaje
Sobrepuestas en el techo (SFD)
Fuente luminica
LED
Sistema óptico
Reflector pulido (PRE)
Cableado
Equipo de control electrónico FIX/DALI (ECG/EDA)
Material
Cuerpo: aluminio moldeado
Reflector: PC-recubrimiento evaporativo
Cubierta: cristal endurecido transparente
Tratamiento de la superficie
Cuerpo: negro RAL 9005 (B05)
Accesorios
Reflector superior con 50° ángulo de rayo
Vida útil
100,000 horas/L80
Temperatura ambiente
Desde -40 °C a +40 °C

IT

Installazione
A plafone (SFD)
Sorgente luminosa
LED
Sistema ottico
Riflettore lucido (PRE)
Cablaggio
Ballast elettronico FIX/DALI (ECG/EDA)
Materiali
Corpo: pressofusione di alluminio
Riflettore: PC-rivestimento ad evaporazione
Copertura: vetro temperato trasparente
Finitura
Corpo: nero RAL 9005 (B05)
Accessori
Riflettore superiore con 50° angolo di emissione
Durata di vita
100,000 ore/L80
Temperatura d'ambiente
Da -40 °C a +40 °C

RU

Установка
Потолочная накладная (SFD)
Источник света
LED
Оптическая система
Шлифованный отражатель (PRE)
Электрическое оснащение
Электронный аппарат FIX/DALI (ECG/EDA)
Material
Корпус: литой алюминий
Отражатель: ПЦ-вакуумное напыление
Крышка: чистое закаленное стекло
Отделка поверхности
Корпус: черный RAL 9005 (B05)
Аксессуары
Дополнительный отражатель с углом 50° луча
Срок службы
100,000 часов/L80
Температура окружающей среды
От -40 °C до +40 °C

GRAFIAS SUSPENDED

POLISHED LED

LED

FASTRUNNER



Grafias Suspended



EN

Mounting
Suspended (SSD)
Light source
LED
Optical system
Polished reflector (PRE)
Wiring
Electronic control gear FIX/DALI (ECG/EDA)
Emergency unit variant (3H)
Materials
Housing: die-cast aluminium
Reflector: evaporative coated PC
Cover: transparent hardened glass
Surface finish
Housing: black RAL 9005 (B05)
Accessories
Additional reflector with 50° beam angle
Rope suspension
Chain suspension system:
X1 - for 1 luminaire (Ballproof version)
X2 - for 2 luminaires, X4 - for 4 luminaires
Service lifetime
100,000 hours/L80
Ambient temperature
From -40 °C to +40 °C
(from 0°C with EM unit)

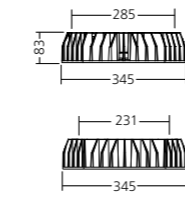
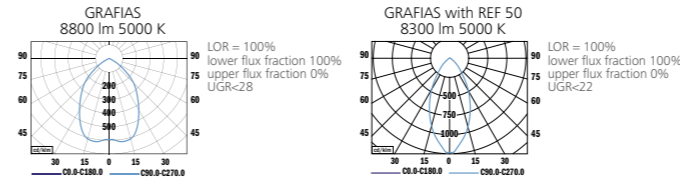
DE

Montage
Hängend (SSD)
Lichtquelle
LED
Optisches System
Polierter Reflektor (PRE)
Vorschaltgerät
Elektronisches Vorschaltgerät FIX/DALI (ECG/EDA)
Notbeleuchtung Variante (3H)
Material
Körper: Aluminiumdruckguss
Reflektor: PC- evaporative Beschichtung
Abdeckung: durchsichtig gehärteter Glas
Oberflächenveredelung
Körper: Schwarz RAL 9005 (B05)
Zubehör
Zusätzlicher Reflektor mit Ausstrahlungswinkel 50°
Seilaufhängung
Kettenaufhängungssystem:
X1 - für 1 Leuchte (Ballwurfsichere Version)
X2 - für 2 Leuchten, X4 - für 4 Leuchten
Lebensdauer
100,000 Stunden/L80
Umgebungstemperatur
Von -40 °C bis +40 °C
(von 0°C mit Notbeleuchtung)

FR

Montage
Plafonnier Suspendu (SSD)
Source lumineuse
LED
Système optique
Réflecteur poli (PRE)
Équipement électrique
Ballast électronique FIX/DALI (ECG/EDA)
Variante de l'unité de secours (3H)
Matériels
Corps: aluminium moulé sous pression
Réflecteur: PC-évaporative Beschichtung
Couverture: verre trempé transparente
Finition de surface
Corps: noir RAL 9005 (B05)
Accessoires
Réflecteur supplémentaire avec 50° angle de faisceau
Câble de suspension
Système de chaîne suspension:
X1 - pour 1 luminaire (Résistance au impact de balle)
X2 - pour 2 luminaires, X4 - pour 4 luminaires
Durée de vie utile
100,000 heures/L80
Température ambiante
De -40 °C à +40 °C
(de 0°C avec l'unité de secours)

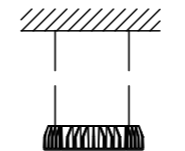
PHOTOMETRY



SUSPENDED WITH REF 50



MOUNTING



X2 SUSPENDED



X4 SUSPENDED



EMERGENCY



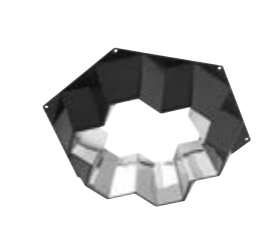
CHAIN SUSPENSION X2



CHAIN SUSPENSION X4



REF 50



TYPE	NET LUMEN OUTPUT (at Ta = 25 °C) (lm)	POWER CONSUMPTION (W)	SYSTEM EFFICACY (lm/W)	COLOUR RENDERING INDEX CRI (Ra)	CORRELATED COLOUR TEMPERATURE CCT (K)	BEAM ANGLE (CO-180, C90-270)	EMERGENCY UNIT 3H (lm)	WEIGHT (kg)
GRAFIAS SSD	7200	99	73	80+	4000	70°, 77°	-	7.8
GRAFIAS SSD	8800	99	89	70+	5000	70°, 77°	-	7.8
GRAFIAS SSD	13,600	140	97	80+	4000	70°, 77°	250	7.8
GRAFIAS SSD	17,200	140	123	65+	5700	70°, 77°	300	7.8
GRAFIAS SSD REF	6800	99	69	80+	4000	50°	-	8.0
GRAFIAS SSD REF	8300	99	84	70+	5000	50°	-	8.0
GRAFIAS SSD REF	12,800	140	91	80+	4000	50°	-	8.0
GRAFIAS SSD REF	16,200	140	116	65+	5700	50°	-	8.0

Luminous flux tolerance +/- 10%.

SUS 1.50 C0/045 SUSPENSION 45



THE MANUFACTURER RESERVES ALL RIGHTS TO MAKE CHANGES IN MATERIALS AND COMPONENTS USED IN PRODUCTION OF LIGHTING FITTINGS.

LUMINAIRES WITH HIGH PROTECTION DEGREE

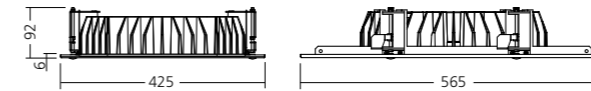
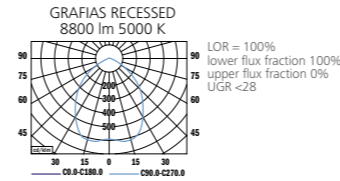
GRAFIAS RECESSED

POLISHED
LED

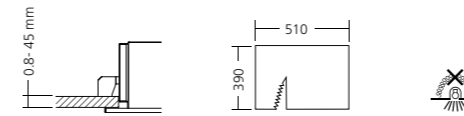


Grafias Recessed

PHOTOMETRY

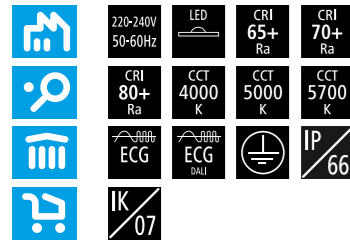


MOUNTING



TYPE	NET LUMEN OUTPUT (at Ta = 25 °C) (lm)	POWER CONSUMPTION (W)	SYSTEM EFFICACY (lm/W)	COLOUR RENDERING INDEX CRI (Ra)	CORRELATED COLOUR TEMPERATURE CCT (K)	BEAM ANGLE (C0-180, C90-270)	WEIGHT (kg)
GRAFIAS RCD	7200	99	73	80+	4000	70°, 77°	11.4
GRAFIAS RCD	8800	99	89	70+	5000	70°, 77°	11.4
GRAFIAS RCD	13,600	140	97	80+	4000	70°, 77°	11.4
GRAFIAS RCD	17,200	140	123	65+	5700	70°, 77°	11.4

Luminous flux tolerance +/- 10%.



EN

Mounting
Ceiling recessed (RCB)

Light source
LED

Optical system
Polished reflector (PRE)

Wiring
Electronic control gear FIX/DALI (ECG/EDA)

Materials
Housing: die-cast aluminium
Reflector: evaporative coated PC
Cover: transparent hardened glass
Mounting plate: sheet steel

Surface finish
Mounting plate: white RAL 9003 (W03)

Accessories
Safety wires

Service lifetime
100,000 hours/L80

Ambient temperature
From -40 °C to +40 °C

DE

Montage
Einbauleuchte (RCB)

Lichtquelle
LED

Optisches System
Polierter Reflektor (PRE)

Vorschaltgerät
Elektronisches Vorschaltgerät FIX/DALI (ECG/EDA)

Material
Körper: Aluminiumdruckguss
Reflektor: PC- evaporative Beschichtung
Abdeckung: durchsichtig gehärteter Glas
Montageplatte: Stahlblech

Oberflächenveredelung
Montageplatte: weiss RAL 9003 (W03)

Zubehör
Sicherungsseile

Lebensdauer
100,000 Stunden/L80

Umgebungstemperatur
Von -40 °C bis +40 °C

FR

Montage
Plafonnier encastrable (RCB)

Source lumineuse
LED

Système optique
Réflecteur poli (PRE)

Équipement électrique
Ballast électronique FIX/DALI (ECG/EDA)

Matériels
Corps: aluminium moulé sous pression
Réflecteur: PC- revêtement d'évaporation
Couvercle: verre trempé transparent
Plaque de montage: tôle d'acier

Finition de surface
Plaque de montage: blanc RAL 9003 (W03)

Accessoires
Des fils de sécurité

Durée de vie utile
100,000 heures/L80

Température ambiante
De -40 °C à +40 °C

SK

Montáž
Vsadené (RCB)

Svetelný zdroj
LED

Optický systém
Leštený reflektor (PRE)

Elektrická výbava
Elektronický predradník FIX/DALI (ECG/EDA)

Material
Teleso: hliníkový odlatok
Reflektor: PC-vákuovo pokovený
Kryt: transparentné tvrdené sklo
Montážna platňa: ocelový plech

Povrchová úprava
Montážna platňa: biela RAL 9003 (W03)

Príslušenstvo
Poistné lanká

Servisná životnosť
100,000 hodín/L80

Teplota okolia
Od -40 °C do +40 °C

ES

Montaje
Empotradas en el techo (RCB)

Fuente luminica
LED

Sistema óptico
Reflector pulido (PRE)

Cableado
Equipo de control electrónico FIX/DALI (ECG/EDA)

Material
Cuerpo: aluminio moldeado
Reflector: PC-recubrimiento evaporativo
Cubierta: cristal endurecido transparente
Placa de montaje: lámina de acero

Tratamiento de la superficie
Placa de montaje: blanco RAL 9003 (W03)

Accesorios
Cables de seguridad

Vida útil
100,000 horas/L80

Temperatura ambiente
Desde -40 °C a +40 °C

IT

Installazione
Ad incasso a soffitto (RCB)

Sorgente luminosa
LED

Sistema ottico
Riflettore lucido (PRE)

Cablaggio
Ballast elettronico FIX/DALI (ECG/EDA)

Materiali
Corpo: pressofusione di alluminio
Riflettore: PC-rivestimento ad evaporazione
Copertura: vetro temperato trasparente
Plastra di installazione: lamina d'acciaio

Finitura
Plastra di installazione: bianco RAL 9003 (W03)

Accessori
Cavo di sicurezza

Durata di vita
100,000 ore/L80

Temperatura d'ambiente
Da -40 °C a +40 °C

RU

Установка
Потолочная встроенная (RCB)

Источник света
LED

Оптическая система
Шлифованный отражатель (PRE)

Электронное оснащение
Электронный аппарат FIX/DALI (ECG/EDA)

Material
Корпус: литой алюминий
Отражатель: ПЦ-вакуумное напыление
Крышка: чистое закаленное стекло
Монтажная пластина: листовая сталь

Отделка поверхности
Монтажная пластина: белый RAL 9003 (W03)

Аксессуары
Контрольная проволока

Срок службы
100,000 часов/L80

Температура окружающей среды
От -40 °C до +40 °C



THE MANUFACTURER RESERVES ALL RIGHTS TO MAKE CHANGES IN MATERIALS AND COMPONENTS USED IN PRODUCTION OF LIGHTING FITTINGS.